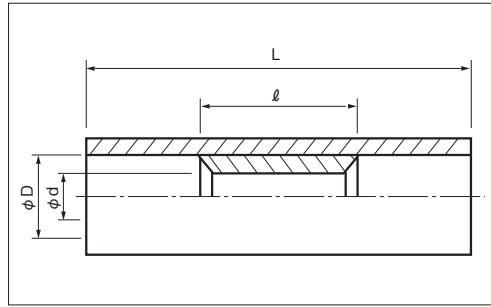


INSULATED PARALLEL CONNECTORS (P TYPE) **TMV** : Vinyl

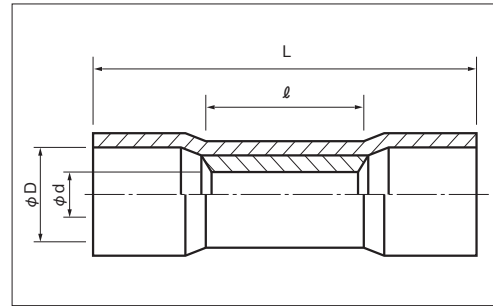
■ TGV (NON FLARE)



RoHS 6
See page 2

PART NUMBER	DIMENSIONS mm				WIRE RANGE		TOOL No.		STD COLOR	STD QTY/BOX
	φd	φD	L	ℓ	STRANDED mm ²	AWG	HAND TOOL No.			
							TOOL BODY No.	DIES No.		
TGV P-1.25 ◇	1.8	3.2	19.0	8.0	0.3~1.65	22-16	NA 10 NA 3	NH 11 NH 32 N10 11 N3 11	RED	1,000 (100×10)
TGV P-2 ◇	2.3	3.9	19.0	8.0	1.04~2.63	16-14	NA 10 NA 3	NH 12 NH 32 N10 12 N3 12	BLUE	1,000 (100×10)
TGV P-5.5 ◇	3.5	5.4	21.5	8.5	2.63~6.64	12-10	NA 10 NA 3	NH-13 N10 13 N3 13	YELLOW	1,000 (100×10)

■ TMV (FLARED)



RoHS 6
See page 2

PART NUMBER	DIMENSIONS mm				WIRE RANGE		TOOL No.		STD COLOR	STD QTY/BOX
	φd	φD	L	ℓ	STRANDED mm ²	AWG	HAND TOOL No.			
							TOOL BODY No.	DIES No.		
TMV P-0.5 ◇	1.4	2.9	19.0	8.0	0.3~0.75	22-18	NA 10 NA 3	NH 5 NH 32 N10 10 N3 5	YELLOW	1,000 (100×10)
TMV P-1.25 ◇	1.8	3.8	19.0	8.0	0.3~1.65	22-16	NA 10 NA 3	NH 11 NH 32 N10 11 N3 11	RED	1,000 (100×10)
TMV P-2 ◇	2.3	4.5	19.0	8.0	1.04~2.63	16-14	NA 10 NA 3	NH 12 NH 32 N10 12 N3 12	BLUE	1,000 (100×10)
TMV P-5.5 ◇	3.5	6.4	21.5	8.5	2.63~6.64	12-10	NA 10 NA 3	NH 13 N10 13 N3 13	YELLOW	1,000 (100×10)

NOTE 1) ◇ : CSA

2) Transparent insulator is also available for TGVP and TMVP(Vinyl).