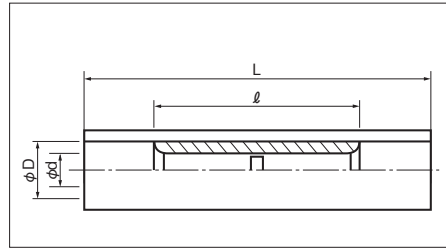
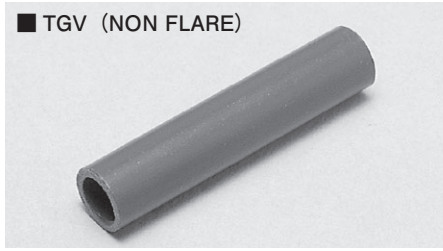


INSULATED BUTT CONNECTORS (B TYPE) TGV TMV TMDV : Vinyl

SEAMLESS BUTT

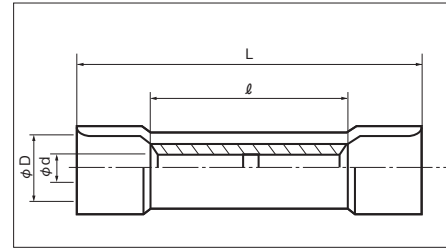
TGV (NON FLARE)



RoHS 6
See page 2

PART NUMBER	DIMENSIONS mm				WIRE RANGE		TOOL No.		STD COLOR	STD QTY/BOX
	phi d	phi D	L	l	STRANDED mm ²	AWG	HAND TOOL No.			
TOOL BODY No.							DIES No.			
TGV B-0.5	1.4	2.6	24.0	11.5	0.3~0.75	22-18	NA 10 NA 3	NH 5 NH 32 N10 10 N3 5	YELLOW	1,000 (100×10)
TGV B-1.25 ◇	1.8	3.2	25.5	15.0	0.3~1.65	22-16	NA 10 NA 3	NH 11 NH 32 N10 11 N3 11	RED	1,000 (100×10)
TGV B-2 ◇	2.3	3.9	25.5	15.0	1.04~2.63	16-14	NA 10 NA 3	NH 12 NH 32 N10 12 N3 12	BLUE	1,000 (100×10)
TGV B-5.5 ◇	3.5	5.4	27.5	15.0	2.63~6.64	12-10	NA 10 NA 3	NH 13 N10 13 N3 13	YELLOW	500 (100×5)

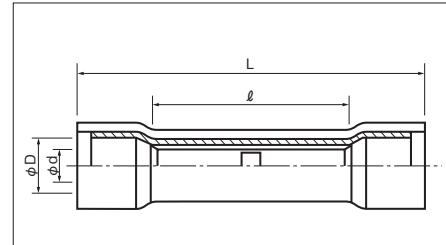
TMV (FLARED)



RoHS10 See page 2
RoHS 6 TMV B-0.5 See page 2

PART NUMBER	DIMENSIONS mm				WIRE RANGE		TOOL No.		STD COLOR	STD QTY/BOX
	phi d	phi D	L	l	STRANDED mm ²	AWG	HAND TOOL No.			
TOOL BODY No.							DIES No.			
TMV B-0.5 ◇	1.4	2.9	24.0	11.5	0.3~0.75	22-18	NA 10 NA 3	NH 5 NH 32 N10 10 N3 5	YELLOW	1,000 (100×10)
TMV B-1.25 ◇	1.8	3.8	25.5	15.0	0.3~1.65	22~16	NA 10 NA 3	NH 11 NH 32 N10 11 N3 11	RED	1,000 (100×10)
TMV B-2 ◇	2.3	4.5	25.5	15.0	1.04~2.63	16-14	NA 10 NA 3	NH 12 NH 32 N10 12 N3 12	BLUE	1,000 (100×10)
TMV B-5.5 ◇	3.5	6.4	27.5	15.0	2.63~6.64	12-10	NA 10 NA 3	NH 13 N10 13 N3 13	YELLOW	500 (100×5)

TMDV (with extra copper sleeve)



RoHS 6
See page 2

Non stock item

PART NUMBER	DIMENSIONS mm				WIRE RANGE		TOOL No.		STD COLOR	STD QTY/BOX
	phi d	phi D	L	l	STRANDED mm ²	AWG	HAND TOOL No.			
TOOL BODY No.							DIES No.			
TMDVB-1.25 ◇	1.8	3.6	25.5	15.0	0.3~1.65	22-16	NH 11 NH 32		RED	1,000 (100×10)
TMDVB-2 ◇	2.3	4.3	25.5	15.0	1.04~2.63	16-14	NH 12 NH 32		BLUE	1,000 (100×10)
TMDVB-5.5 ◇	3.5	6.0	27.5	15.0	2.63~6.64	12-10	NH 13		YELLOW	500 (100×5)

NOTE 1) ◇ : CSA

- Refer to page 41 for UL/CSA, insulator material/color, proper strip length of wire.
- Transparent and colored insulators are available for TGV B and TMV B(Vinyl).