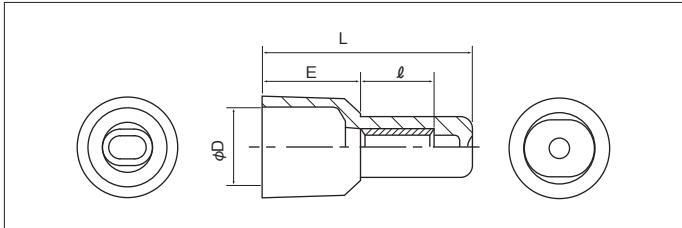
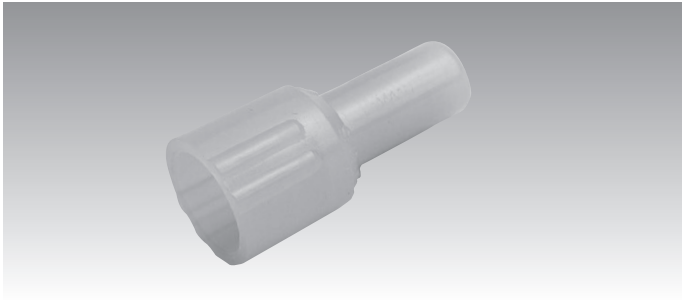


HIGH TEMP CLOSED END CONNECTORS



SPECIFICATION

When a fire breaks out, the circuit for the fire alarm must withstand the enormous heat to activate the alarm. These closed end connectors surpass the temperature rise test to 380 °C in 15 minutes.

FEATURE

- RATED CURRENT SQ CE-2HP/5HP : 5A
- RATED VOLTAGE 300V
- INSTALLATION TEMP : 0 ~ 40°C
- INSULATOR TEMPERATURE : -40 ~ 75°C

RoHS10

See page 2

PART NUMBER	DIMENSIONS mm				TOOL No.	MATERIAL OF INSULATOR	COLOR	STD QTY/BOX
	φ D	L	l	E				
SQ CE - 2HP	9.6	20.0	7.0	9.5	NH 40	CROSS LINKED POLYETHYLENE	RED TRANSCULECENT	1,000(100×10)
SQ CE - 5HP	12.3	22.0	8.1	10.0				500(100×5)

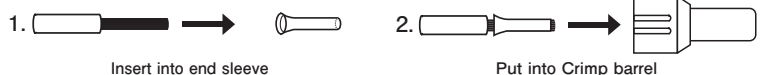
EXAMPLE OF WIRE COMBINATION

PART NUMBER	SOLID + SOLID WIRE				SOLID + STRANDED WIRE (USE END SLEEVE FOR STRANDED WIRE)	TOOL No.	
	φ 0.9mm	φ 1.0mm	φ 1.2mm	φ 1.6mm		DIE ID	
SQ CE - 2HP	2pcs	—	2pcs	—	φ 0.9mm×1pc+0.5mm ² ×1pc φ 0.9mm×1pc+0.75mm ² ×1pc φ 1.0mm×1pc+0.5mm ² ×1pc φ 1.0mm×1pc+0.75mm ² ×1pc	2HP	NH 40
	φ 0.9mm×1pc+ φ 1.2mm×1pc						
SQ CE - 5HP	3~4pcs	—	3~4pcs	2pcs	φ 0.9mm×1pc+1.25mm ² ×1pc φ 1.0mm×1pc+1.25mm ² ×1pc φ 1.2mm×1pc+0.5mm ² ×1~2pcs φ 1.2mm×1pc+0.75mm ² ×1~2pcs φ 1.2mm×1pc+1.25mm ² ×1pc φ 1.2mm×2pcs+0.5mm ² ×1pc	5HP	NH 40
	φ 0.9mm×1pc+ φ 1.2mm×2pcs φ 0.9mm×2pcs+ φ 1.2mm×1pc						

Use applicable end sleeve from the chart

STRANDED WIRE SIZE	0.5mm ²	0.75mm ²	1.25mm ²	
PART No. OF END SLEEVE	E 0.5	E 0.75	E 1.25	
DIMENSIONS (mm)	φd×φD×L 1.0×1.3×10	φd×φD×L 1.2×1.5×10	φd×φD×L 1.6×1.8×10	

NOTE : Stranded wires must be inserted into the end sleeves before crimping.



1. Insert into end sleeve

2. Put into Crimp barrel