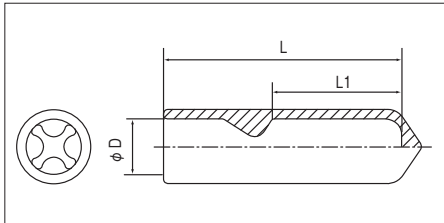
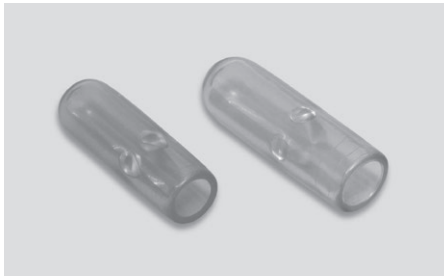


END CAPS (For open end connectors)



FEATURES

- Easy insulation treatment.
- Translucent cap makes easy inspection.
- Good insulation performance.

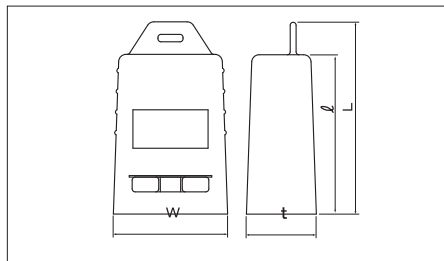
RoHS10
See page 2

SPECIFICATION

- MATERIAL P.V.C
- WITHSTAND VOLTAGE 300°C
- MAX. TEMPERATURE 60°C
- MIN. INSTALLATION TEMP. 0°C

PART NO.	DIMENSION mm			MATING CONNECTOR	STD COLOR	STD QTY/BOX
	φ D	L	L 1			
END V-S	7.0	30.2	(16.4)	E-S	RED TRANSLUCENT	500 (100×5)
END V-L	8.5	34.5	(17.1)	E-M,E-L	GREEN TRANSLUCENT	250 (50×5)

JOINT COVERS



FEATURES

- Protect wire jointed area.
- Joint Cover acts as a tension relief.
- Translucent and soft vinyl material.
- It has a groove on the back of the Joint Cover to fit suspension bolt.

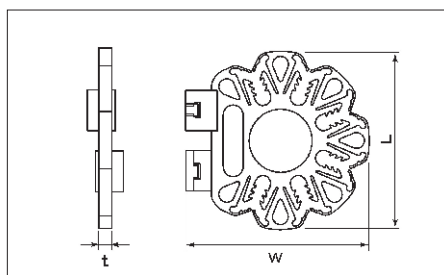
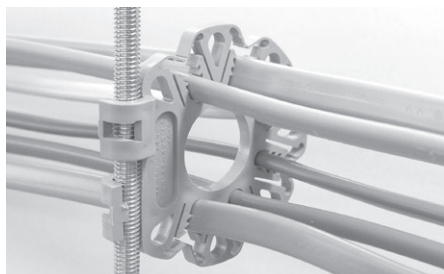
RoHS10
See page 2

SPECIFICATION

- MATERIAL P.V.C. UL94V-0 (Translucent)
- INSULATOR TEMPERATURE 75°C
- WITHSTAND VOLTAGE 3000V

PART NO.	DIMENSION mm				PACKING QTY
	L	ℓ	W	t	
JB 130	128	105	77	47	50(10×5)
JB 170	168	148	80	51	

ROMEX CABLE SUPPORTERS



FEATURES

- Distributed wire suspension system prevents the danger of temperature rise and deterioration of cable insulation.
- Snap onto the suspension bolt with ease.

RoHS10
See page 2

SPECIFICATION

- APPLICABLE WIRE Romex cable (2 or 3 cores)
- CABLE QTY Upto 6 cables
- MATERIAL Polypropylene (UL94V-0)
- INSULATOR TEMPERATURE -15°C~ 75°C
- INSTALLATION TEMP 0°C~ 40°C
- SUSPENSION BOLT W 3/8 bolt

PART NO.	DIMENSION mm			PACKING QTY
	L	W	t	
NCS 6P	89.5	91.5	6	50 (5×10)