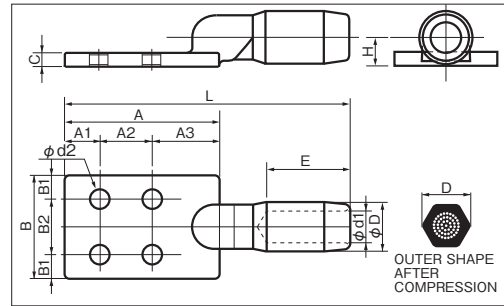
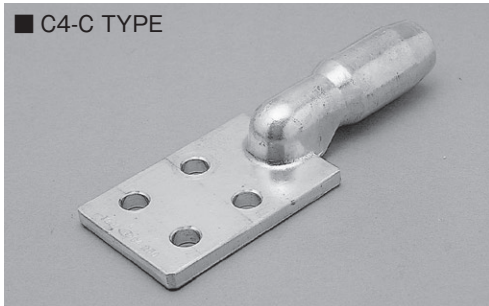
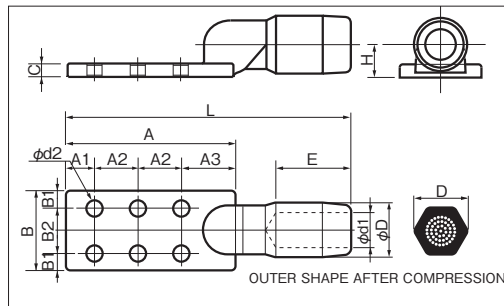
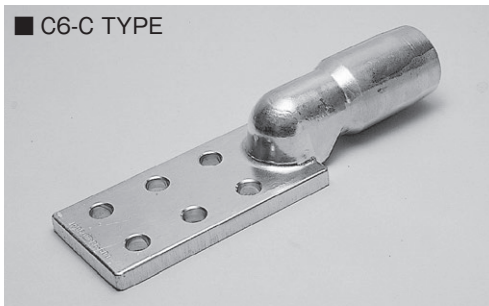


COMPRESSION TERMINALS (For Compressed copper stranded wire)



PART NUMBER	DIMENSIONS mm													BOLT SIZE	APPLIED WIRE	VERTEX DISTANCE OF HEXAGONAL DIES	TOOL No.		STD QTY./BOX	
	φD	φd1	E	A	A1	A2	A3	B	B1	B2	C	φd2	L		H		STRAND OUTER DIAMETER mm	PUMP		HEAD
C4-100C	23	12.6	39												M12×4	12.0	23	NOM 2500A NOM 3000	NP 520 NP 1000	3
C4-150C	29	15.4	44											16.0		29				
C4-200C	32	17.9	53											185		32				
C4-250C	38	19.9	62	115	25	40	50	75	17.5	40	10	14	212	20.5		38				
C4-325C	42	22.7												23.0		42				
C4-400C	47	25.2	70								12	222	25.5	24.1		47				
C4-500C		28.0		26.9																



PART NUMBER	DIMENSIONS mm													BOLT SIZE	APPLIED WIRE	VERTEX DISTANCE OF HEXAGONAL DIES	TOOL No.		STD QTY./BOX	
	φD	φd1	E	A	A1	A2	A3	B	B1	B2	C	φd2	L		H		STRAND OUTER DIAMETER mm	PUMP		HEAD
C6-600C	51	30.7	70	155	25	40	50	75	17.5	40		14	262	28.0	M12×6	29.5	51	NOM 2500A NOM 3000	NP 1000	1
C6-800C	56	35.3	90	190	30	50	60	100	25.0	50	12	18	325	30.5	M16×6	34.0	56			
C6-850C		35.6														35.1				
C6-1000C	64	39.4	100								14	335	34.5		38.0	64				

RoHS 10

■ SPECIAL LARGER SIZE [See page 2](#)

PART NUMBER	DIMENSIONS mm													BOLT SIZE	APPLIED WIRE	VERTEX DISTANCE OF HEXAGONAL DIES	TOOL No.		STD QTY./BOX	
	φD	φd1	E	A	A1	A2	A3	B	B1	B2	C	φd2	L		H		STRAND OUTER DIAMETER mm	PUMP		HEAD
C6-1200A-SN	69	43.3	90										350	37.0	M16×6	41.7	69	SMP3	SR-200M	1
C6-1400A-SN	76	46.7	95	200	30	50	70	100	25	50	20	18	365	40.0		45.0	76			
C6-1600A-SN		50.0	100													48.2				

NOTE

1) Above 3 part numbers are tin plated on entire surface.