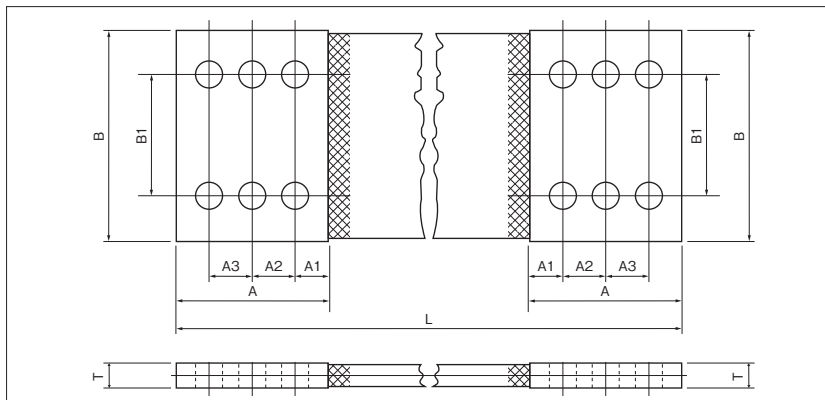


SHUNT WIRES

SD TYPE



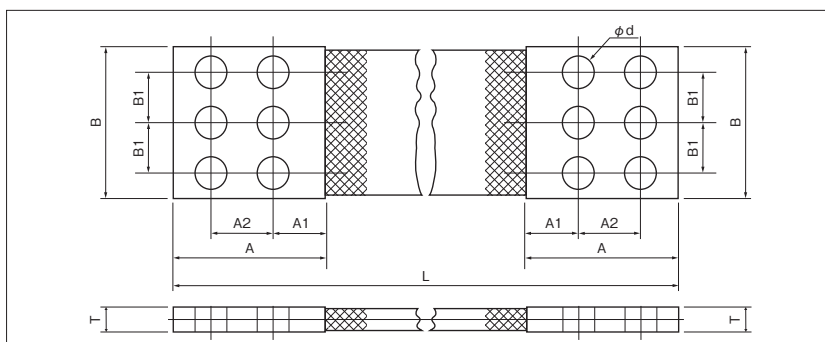
Standard

RoHS10

See page 2

PART NUMBER	RATED CURRENT A	BRAIDED WIRE CROSS SECTIONAL AREA mm ²	DIMENSIONS mm								
			T	ϕd	STANDARD LENGTH L	B	B1	A	A1	A2	A3
SD 1-L	3200	1800	25.2	14	400	120	60	125	20	40	40
SD 2-L	3450	2160	30.2								
SD 3-L	1460	400	10.0								
SD 4-L	1640	500	11.2								
SD 5-L	1800	600	12.0								
SD 6-L	2100	800	13.8								
SD 7-L	2350	1000	15.8								
SD 8-L	2600	1200	17.5								
SD 9-L	3000	1600	21.0								
SD 10-L	3400	2000	24.5								
SD 11-L	3600	2100	26.0								
SD 12-L	3800	2400	28.0								
SD 13-L	4000	2700	32.5								
SD 14-L	4100	2800	33.5								

SE TYPE



Standard

RoHS10

See page 2

PART NUMBER	RATED CURRENT A	BRAIDED WIRE CROSS SECTIONAL AREA mm ²	DIMENSIONS mm							
			T	ϕd	STANDARD LENGTH L	B	B1	A	A1	A2
SE 1-L	3200	1800	25.2	14	400	120	30	125	20	80
SE 2-L	3450	2160	30.2							
SE 3-L	1460	400	10.0							
SE 4-L	1640	500	11.2							
SE 5-L	1800	600	12.0							
SE 6-L	2100	800	13.8							
SE 7-L	2350	1000	15.8							
SE 8-L	2600	1200	17.5							
SE 9-L	3000	1600	21.0							
SE 10-L	3400	2000	24.5							
SE 11-L	3600	2100	26.0							
SE 12-L	3800	2400	28.0							
SE 13-L	4000	2700	32.5							
SE 14-L	4100	2800	33.5							