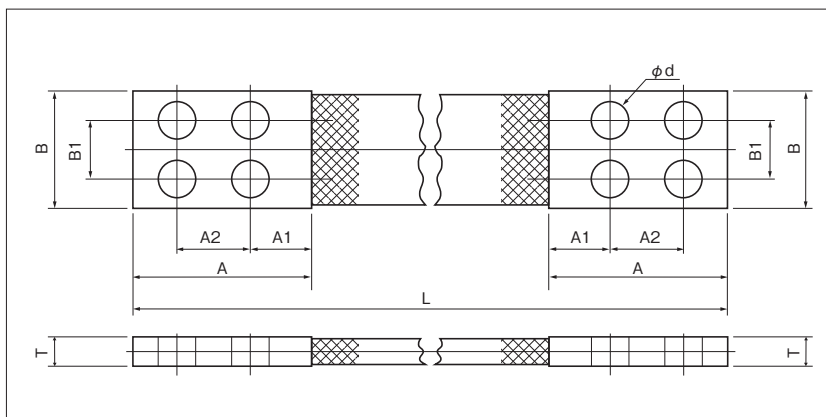


SHUNT WIRES

SC TYPE



Standard
RoHS10
See page 2

PART NUMBER	RATED CURRENT A	BRAIDED WIRE CROSS SECTIONAL AREA mm ²	T	φ d	DIMENSIONS mm					
					STANDARD LENGTH L	B	B1	A	A1	A2
SC 1-L	680	160	7.5	14	350	75	40	95	30	40
SC 2-L	760	200	8.5							
SC 3-L	860	250	9.3							
SC 4-L	940	300	10.5							
SC 5-L	1100	400	11.8							
SC 6-L	1240	500	13.1							
SC 7-L	1380	600	15.0							
SC 8-L	1630	800	18.5							
SC 9-L	1860	1000	20.7							
SC 10-L	2070	1200	25.3							
SC 11-L	860	200	8.0		400	100	50	105	30	50
SC 12-L	970	250	9.2							
SC 13-L	1060	300	9.5							
SC 14-L	1240	400	10.5							
SC 15-L	1380	500	12.0							
SC 16-L	1530	600	13.2							
SC 17-L	1800	800	15.5							
SC 18-L	2000	1000	18.0							
SC 19-L	2200	1250	21.0							
SC 20-L	2500	1500	24.3							
SC 21-L	2700	1600	25.5							
SC 22-L	2900	1800	28.5							

NOTE

1) Thickness (T) is for reference.

Special ordered shunt wires are available upon request.