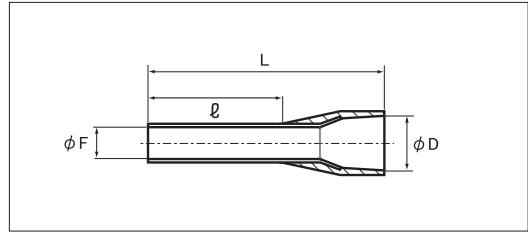
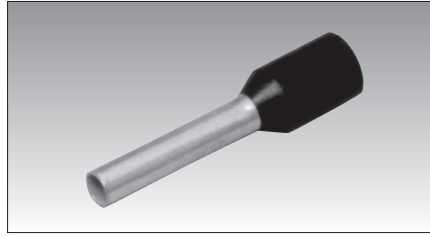


WIRE ENDS

■ SINGLE WIRE

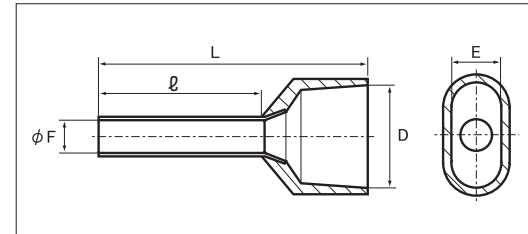
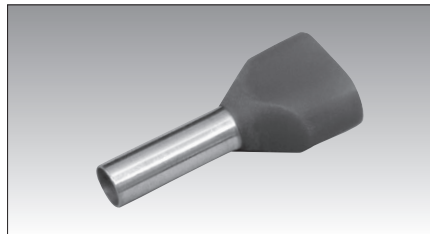


RoHS10
See page 2

(For wires with thick insulation)

PART NUMBER	DIMENSIONS mm				WIRE RANGE		TOOL No.	COLOR	STD QTY/BAG
	ϕF	ϕD	l	L	STRANDEDmm ²	AWG	HAND TOOL No.		
NFG 0.5-8	1.1	2.9	8.0	14.0	0.5	20	NH 79A NH 89	WHITE	500
NFG 0.5-10			10.0	16.0				BLUE/GRAY	
NFG 0.75-8	1.3	3.3	8.0	14.0	0.75	20		RED	
NFG 0.75-10			10.0	16.0				BLACK	
NFG 1.0-8	1.5	3.3	8.0	14.0	1.0	18		GRAY/BLUE	
NFG 1.0-10			10.0	16.0				BLUE	
NFG 1.5-8	1.8	3.7	8.0	14.0	1.25 · 1.5	16		GRAY	500
NFG 1.5-10			10.0	16.0				BLUE	
NFG 2.5-8	2.3	4.7	8.0	15.0	2.0 · 2.5	14	GRAY	200	
NFG 2.5-10			10.0	17.0			GRAY		
NFG 2.5-12			12.0	19.0			GRAY		

■ TWIN WIRE



RoHS10
See page 2

PART NUMBER	DIMENSIONS mm					WIRE RANGE		TOOL No.	COLOR	STD QTY/BAG
	ϕF	D	E	l	L	STRANDEDmm ²	AWG	HAND TOOL No.		
NFW 0.5-8	1.5	4.6	2.4	8.0	15.0	0.5×2	20×2	NH 79A NH 89	WHITE	500
NFW 0.5-10				10.0	17.0				BLUE/GRAY	
NFW 0.75-8	1.8	5.4	2.7	8.0	15.0	0.75×2	20×2		GRAY	
NFW 0.75-10				10.0	17.0				RED	
NFW 1.0-8	2.0	5.3	3.3	8.0	15.0	1.0×2	18×2		BLACK	
NFW 1.5-8	2.3	6.5	3.5	8.0	16.0	1.5×2	16×2		GRAY/BLUE	
NFW 2.5-10	2.9	7.7	4.1	10.0	19.0	2.5×2	14×2			