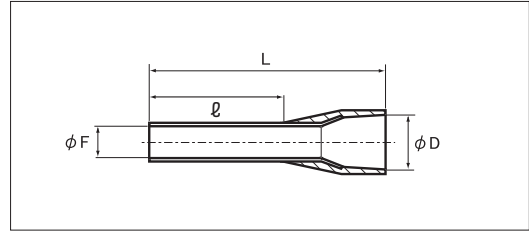
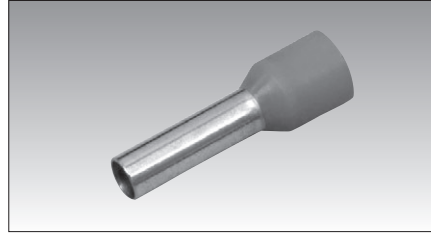


WIRE ENDS

■ SINGLE WIRE



RoHS10
See page 2

■ MATERIAL :SLEEVE : Copper (Tin-plated)
INSULATOR : Polypropylene

■ STANDARD :DIN46228/4 (Except for ※)

PART NUMBER	DIMENSIONS mm				WIRE RANGE		TOOL No.	COLOR	STD QTY/BAG
	ϕF	ϕD	l	L	STRANDEDmm ²	AWG	HAND TOOL No.		
NF 0.14-8	0.8	1.9	8.0	12.0	0.14	26	NH 89	GRAY	500
NF 0.25-6	0.8	1.9	6.0	10.0	0.25	24		YELLOW	
NF 0.25-8			8.0	12.0				YELLOW	
NF 0.25-10			10.0	14.0				YELLOW	
NF 0.25-12			12.0	16.0			BLUE		
NF 0.34-6	0.8	1.9	6.0	10.0	0.3 · 0.34	22	NH 89	TURQUOISE	
NF 0.34-8			8.0	12.0					
NF 0.34-10			10.0	14.0					
NF 0.34-12			12.0	16.0					
NF 0.5-6 ○	1.1	2.4	6.0	12.0	0.5	20	NH 79A NH 89	WHITE	
NF 0.5-8 ○			8.0	14.0					
NF 0.5-10 ○			10.0	16.0					
NF 0.5-12			12.0	18.0					
NF 0.75-6 ○	1.3	2.7	6.0	12.0	0.75	20	NH 79A NH 89	GRAY	
NF 0.75-8 ○			8.0	14.0					
NF 0.75-10 ○			10.0	16.0					
NF 0.75-12 ○			12.0	18.0					
NF 1.0-6 ○	1.5	2.9	6.0	12.0	1.0	18	NH 79A NH 89	RED	
NF 1.0-8 ○			8.0	14.0					
NF 1.0-10 ○			10.0	16.0					
NF 1.0-12 ○			12.0	18.0					
NF 1.5-6	1.8	3.3	6.0	12.0	1.25 · 1.5	16	NH 79A NH 89	BLACK	
NF 1.5-8 ○			8.0	14.0					
NF 1.5-10 ○			10.0	16.0					
NF 1.5-12 ○			12.0	18.0					
NF 2.08-8	2.05	3.5	8.0	14.0	2.0	14	NH 79A NH 89	YELLOW	500
NF 2.5-8 ○	2.3	4.1	8.0	15.0	2.0 · 2.5	14		BLUE/GRAY	
NF 2.5-10 ○			10.0	17.0			BLUE		
NF 2.5-12 ○	2.9	4.7	12.0	19.0	3.5 · 4.0	12	NH 79A NH 89	BLUE/GRAY	200
NF 4.0-10 ○			10.0	17.0				ORANGE/GRAY	
NF 4.0-12 ○	3.6	6.1	12.0	19.0	5.5 · 6.0	10	NH 79A NH 89	GRAY	
NF 6.0-12 ○			12.0	20.0				YELLOW/GREEN	
NF 6.0-18 ○	4.6	7.4	18.0	26.0	10.0	8	NH 89	YELLOW	100
NF 10.0-12 ○			12.0	21.0				BROWN	
NF 10.0-18 ○	4.6	7.4	18.0	27.0	10.0	8	NH 89	BROWN	