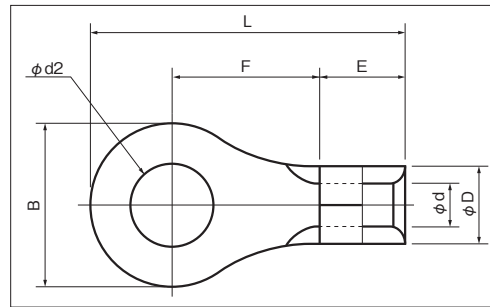
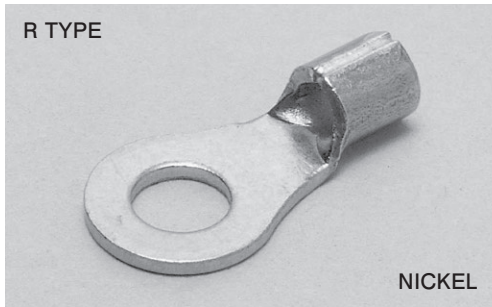


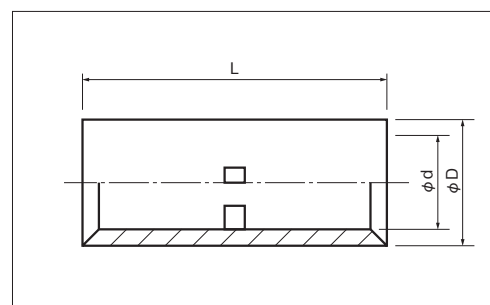
# HIGH TEMPERATURE TERMINALS & SLEEVES (N TYPE)

A



**RoHS10**  
See page 2

PART NUMBER	DIMENSIONS mm							WIRE RANGE		TOOL No.	STD QTY/BOX									
	$\phi d2$	B	L	F	E	$\phi D$	$\phi d$	NICHROME/NICKEL SOLIDmm	NICKEL STRANDEDmm <sup>2</sup>											
<b>N 1.25-3</b>	3.2	5.5	12.0	4.75	4.5	3.4	1.7	0.6~1.4	0.5~1.25	NH 1	1,000 (100×10)									
<b>N 1.25-4</b>	4.3	8.0	15.6	7.1																
<b>N 1.25-5</b>	5.3		21.5	11.0																
<b>N 2-4</b>	4.3	8.5	16.5	7.7	4.5	4.2	2.3	1.5~1.8	1.25~2	NH 1	1,000 (100×10)									
<b>N 2-5</b>	5.3	9.5	17.0																	
<b>N 2-6</b>	6.4	12.0	21.5																	
<b>N 5.5-4</b>	4.3	9.5	19.5	8.2	6.5	5.6	3.4	2.0~2.6	3.5~5.5	NH 1	1,000 (100×10)									
<b>N 5.5-5</b>	5.3																			
<b>N 5.5-6</b>	6.4											23.0	10.5							
<b>N 5.5-8</b>	8.4											15.0	28.0	14.0						
<b>N 8-5</b>	5.3	12.0	23.5	9.1	8.4	7.1	4.5	2.9~3.5	—	NOP 60 NOM 60	1,000 (100×10)									
<b>N 8-6</b>	6.4																			
<b>N 8-8</b>	8.4										15.0	29.5	13.6	10.0	9.0	5.8	4.0~4.5	—	NOP 60 NOM 60 NOP 150H NOM 150	100
<b>N 8-10</b>	10.5																			
<b>N 14-6</b>	6.4	12.0	27.5	11.5	10.0	9.0	5.8	4.0~4.5	—	NOP 60 NOM 60 NOP 150H NOM 150	100									
<b>N 14-8</b>	8.4	16.0	32.5	14.5																
<b>N 22-8</b>	8.4	16.5	33.3	13.0	12.0	11.5	7.7	5.0~5.5	—	NOP 60 NOM 60 NOP 150H NOM 150	100									
<b>N 38-10</b>	10.5	22.0	42.3	18.3	13.0	13.3	9.4	6.0~6.5	—	NOP 60 NOM 60 NOP 150H NOM 150	100									



**RoHS10**  
See page 2

PART NUMBER	DIMENSIONS mm			WIRE RANGE		TOOL No.	STD QTY/BOX
	L	$\phi D$	$\phi d$	NICHROME/NICKEL SOLIDmm	NICKEL STRANDEDmm <sup>2</sup>		
<b>NB 1.25</b>	15.0	3.3	1.8	0.6~1.4	0.5~1.25	NH 1	1,000 (100×10)
<b>NB 2</b>		4.1	2.3	1.5~1.8	1.25~2		
<b>NB 5.5</b>		5.4	3.5	2.0~2.6	3.5~5.5		

MATERIAL : NICKEL for 400°C MAX

NOTE

- 1) Same tools used for Copper Terminals & Sleeves although endurance is low with high temperature terminals.
- 2) Indicated wire range is size per wire for both single and stranded.