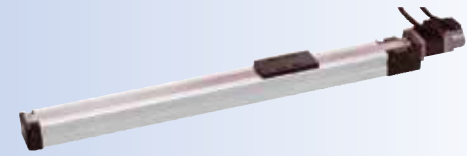


KBX Series

Product lineup [Actuators]

For transporting light loads ♦ Max. load capacity 4 kg 30 kg



KBX-T5D (Ball screw drive)

- Motor output (W) 50
- Stroke (mm) 50 to 500
- Max. load capacity (kg) *1) 10 (horizontal), 3 (vertical)
- Max. speed (mm/s) *2) 800
- Repeatability (mm) ±0.02

Selection guide: pages 2 to 3
Specifications: pages 10 to 17
Model No.: pages 18 to 20

Dimensions: page 22



KBX-T7D (Ball screw drive)

- Motor output (W) 50
- Stroke (mm) 50 to 700
- Max. load capacity (kg) *1) 30 (horizontal), 8 (vertical)
- Max. speed (mm/s) *2) 800
- Repeatability (mm) ±0.02

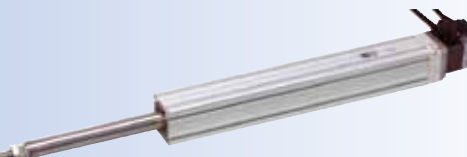
Dimensions: page 23



KBX-T3D (ball screw drive) rod

- Motor output (W) 50
- Stroke (mm) 50 to 150
- Max. load capacity (kg) 4 (horizontal), 1.9 (vertical)
- Max. speed (mm/s) 600
- Repeatability (mm) ±0.02

Dimensions: page 50



KBX-T4D (ball screw drive) rod

- Motor output (W) 50
- Stroke (mm) 50 to 200
- Max. load capacity (kg) 7 (horizontal), 3.1 (vertical)
- Max. speed (mm/s) 600
- Repeatability (mm) ±0.02

Dimensions: page 51



KBX-00D-RH R-axis (harmonic drive)

- Motor output (W) 50
- Max. load capacity (kg) 10
- Rotation range 360°
- Max. Speed (°/s) 360
- Repeatability (°) ±0.025

Dimensions: page 54



KBX-00D-RP R-axis (planet gear)

- Motor output (W) 50
- Max. load capacity (kg) 10
- Rotation range 360°
- Max. Speed (°/s) 857
- Repeatability (°) ±0.125

Dimensions: page 55

*1) Load capacity varies depending on the lead and motor output.
*2) Speed varies depending on the lead and stroke.

For transporting medium loads ♦ Max. load capacity 15 kg 100 kg



KBX-10 (Ball screw drive)

- Motor output (W) 100
- Stroke (mm) 100 to 1250
- Max. load capacity (kg) *1) 80 (horizontal), 22 (vertical)
- Max. speed (mm/s) *2) 1200
- Repeatability (mm) ±0.01

Selection guide: pages 2 to 3
Specifications: pages 10 to 17
Model No.: pages 18 to 20

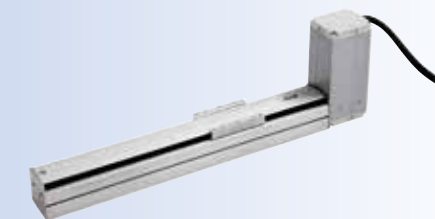
Dimensions: pages 24 to 25



KBX-30 (Ball screw drive)

- Motor output (W) 100, 200
- Stroke (mm) 100 to 1250
- Max. load capacity (kg) *1) 100 (horizontal), 40 (vertical)
- Max. speed (mm/s) *2) 1200
- Repeatability (mm) ±0.01

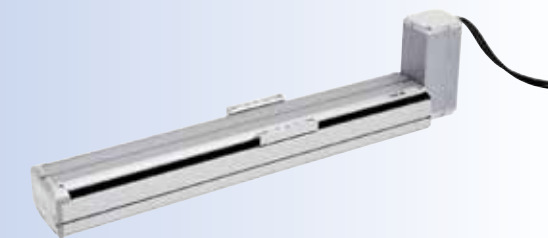
Dimensions: pages 26 to 29



KBX-10 (timing belt drive)

- Motor output (W) 100, 200
- Stroke (mm) 100 to 2550
- Max. load capacity (kg) *1) 20 (horizontal)
- Max. speed (mm/s) *2) 2000
- Repeatability (mm) ±0.04

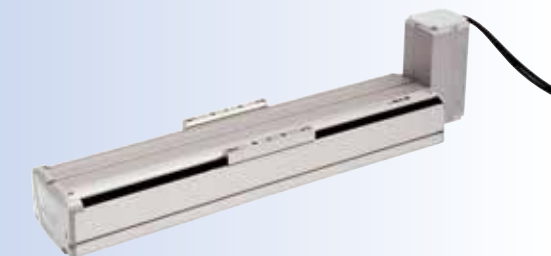
Dimensions: pages 36 to 39



KBX-30 (timing belt drive)

- Motor output (W) 100, 200
- Stroke (mm) 100 to 3200
- Max. load capacity (kg) *1) 40 (horizontal)
- Max. speed (mm/s) *2) 2000
- Repeatability (mm) ±0.04

Dimensions: pages 40 to 43



KBX-50 (timing belt drive)

- Motor output (W) 200, 400
- Stroke (mm) 200 to 3500
- Max. load capacity (kg) *1) 40 (horizontal)
- Max. speed (mm/s) *2) 2000
- Repeatability (mm) ±0.04

Dimensions: pages 44 to 47

*1) Load capacity varies depending on the lead and motor output.
*2) Speed varies depending on the lead and stroke.

For transporting heavy loads ♦ Max. load capacity 60 kg 250 kg

Selection guide: pages 2 to 3
Specifications: pages 10 to 17
Model No.: pages 18 to 20

KBX-50 (Ball screw drive)

- Motor output (W)200, 400
- Stroke (mm)200 to 1600
- Max. load capacity (kg) *1)..... 150 (horizontal), 60 (vertical)
- Max. Speed (mm/s) *2) 1,200 (stroke 600 mm or less, lead 20 mm)
- Repeatability (mm)±0.01

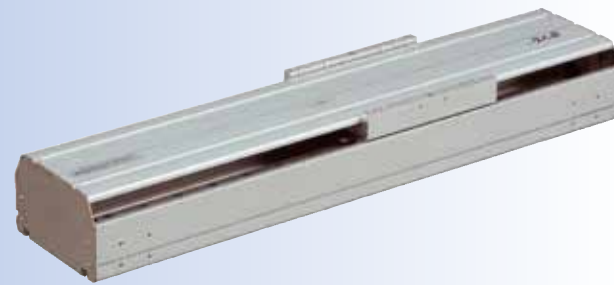
Dimensions: pages 30 to 33



KBX-60 (Ball screw drive)

- Motor output (W)400, 750
- Stroke (mm)150 to 1700
- Max. load capacity (kg) *1).....250 (horizontal), 100 (vertical)
- Max. Speed (mm/s) *2)1,200 (stroke 700 mm or less, lead 20 mm 400 W)
2,300 (stroke 1,000 mm or less, lead 50 mm 750 W)
- Repeatability (mm)±0.01

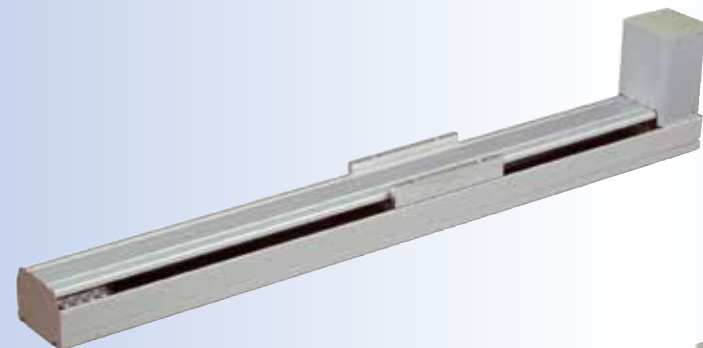
Dimensions: pages 34 to 35



KBX-50 (timing belt drive)

- Motor output (W) 400
- Stroke (mm) 150 to 4450
- Max. load capacity (kg) 100 (horizontal)
- Max. speed (mm/s) 1000
- Repeatability (mm) ±0.05

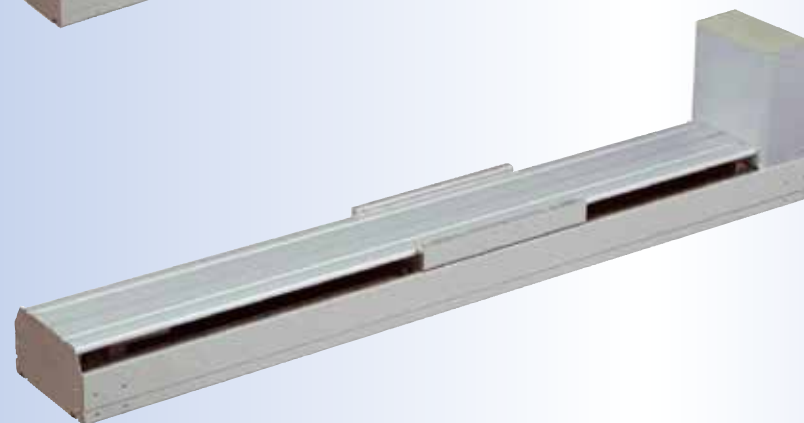
Dimensions: page 48



KBX-60 (timing belt drive)

- Motor output (W) 750
- Stroke (mm) 150 to 4450
- Max. load capacity (kg) 200 (horizontal)
- Max. speed (mm/s) 1000
- Repeatability (mm) ±0.05

Dimensions: page 49



*1) Load capacity varies depending on the lead and motor output.

*2) Speed varies depending on the lead and stroke.

[Orthogonal axis specifications] typical example Other combinations are also possible.

2 axes X-Y type

Selection guide: page 4
Combination table: page 62
Specifications, dimensions: pages 64 to 84



2 axes X-Z type

Selection guide: page 4
Combination table: page 62
Specifications, dimensions: pages 85 to 96



2 axes Y-Z type

Selection guide: page 5
Combination table: page 62
Specifications, dimensions: pages 97 to 109



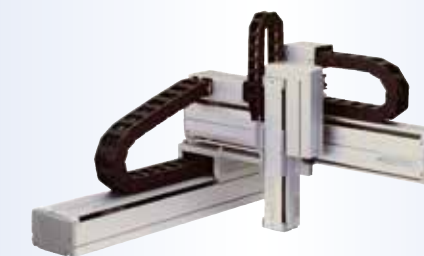
2 axes Z-Y type

Selection guide: page 5
Combination table: page 62
Specifications, dimensions: pages 110 to 120



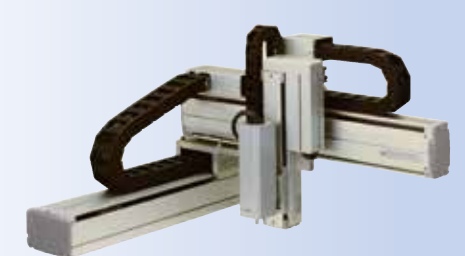
3 axes X-Y-Z type

Selection guide: pages 6 to 7
Combination table: page 63
Specifications, dimensions: pages 121 to 141



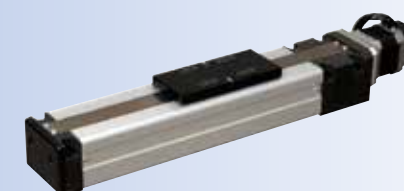
4 axes Y-Y-Z-R type

Selection guide: page 8
Combination table: page 63
Specifications, dimensions: pages 142 to 149



KBZ Series

KBZ-5D-ST-M, 7D-ST-M (Slider)



- Motor output (W) 50
- Stroke (mm) 50 to 700
- Max. load capacity (kg) *1) 12.0 (horizontal), 4.0 (vertical)
- Max. speed (mm/s) *1) 800
- Repeatability (mm) ±0.02

Specifications: page 56, dimensions: page 58

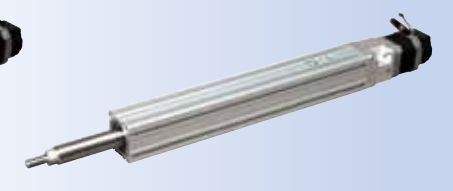
KBZ-5D-ST-T, 7D-ST-T (Table type)



- Motor output (W) 50
- Stroke (mm) 50 to 150
- Max. load capacity (kg) *1) 9.0 (horizontal), 3.5 (vertical)
- Max. speed (mm/s) *1) 800
- Repeatability (mm) ±0.02

Specifications: page 56, dimensions: page 59

KBZ-3D-ST-C, 4D-ST-C (Rod)



- Motor output (W) 50
- Stroke (mm) 50 to 200
- Max. load capacity (kg) *1) 5.2 (horizontal), 2.2 (vertical)
- Max. speed (mm/s) *1) 600
- Repeatability (mm) ±0.02

Specifications: page 56, dimensions: page 60

*1) Load capacity varies depending on the lead

Product lineup [Controllers]

[Control part] Controller for KBX

Master (Scanner) unit
Pages 174 to 180



KCA-25-M10



KCA-25-M40
KCA-25-M80

Slave (Adapter) unit
Pages 181 to 185



KCA-25-S10



KCA-25-S40
KCA-25-S80

Controller with option unit



With Extension I/O unit
Pages 186 to 187



With CC-Link unit
Pages 188 to 190



With DeviceNet unit
Pages 191 to 193

Regenerative discharge unit

For KBX, pages 194 to 196
For KBZ, pages 216 to 217



[For KBX] KCA-ABSU-2000
KCA-ABSU-4000*

* ABSU-4000 has a fan mounted to the bottom.

[For KBZ] KCA-CAR-*



KCA-ABSU-8000

Handy terminal (common to KBX and KBZ)

Page 197



KCA-TPH-4C

Controller for KBZ



Master (Scanner) unit
KCA-01-M05
Pages 204 to 206



Slave (Adapter) unit
KCA-01-S05
Pages 212 to 214



High function master (Scanner) unit
KCA-20-M00
Pages 207 to 211