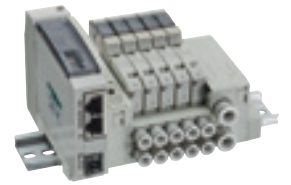


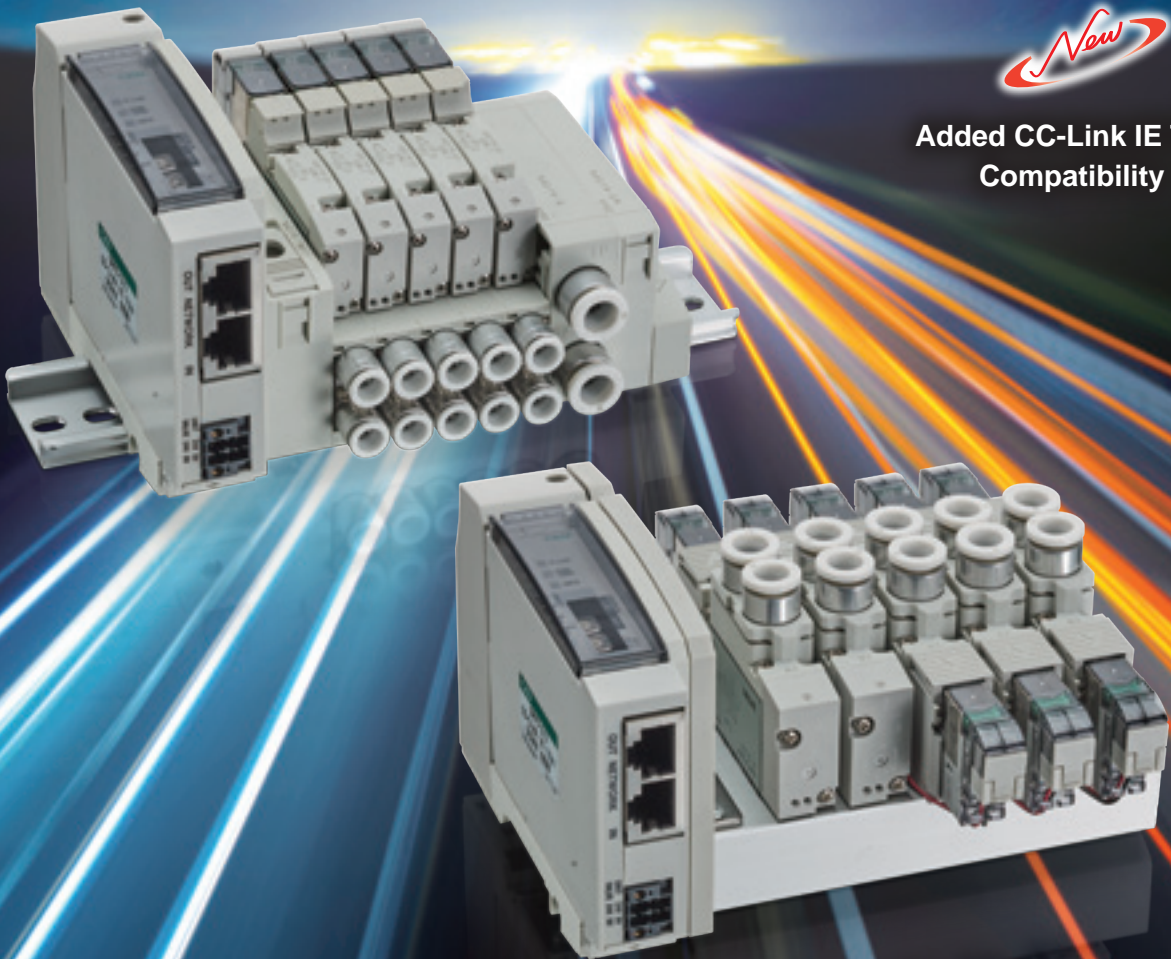
CC-Link IE TSN compatible  
Serial transmission slave unit  
M4G/MN4G-T8 Series



## Next Generation Ready



Added CC-Link IE TSN  
Compatibility



**CC-Link IE TSN** Compatible

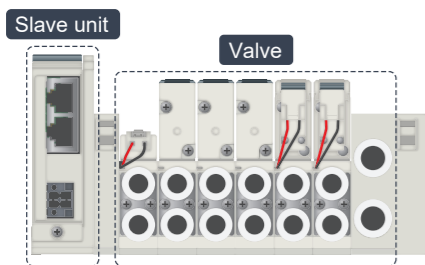
# 4G Series links directly to

# CC-Link IE TSN

## Information from production sites monitored through valves



### Information monitored/set by slave stations (units)



**Unit power ON time**  
Unit power ON threshold setting

**Valve ON count**  
Threshold setting for the valve ON count

### Applications

- Equipment operation time management and component replacement guidelines can be confirmed.
- Enables preventive maintenance by confirming the operational cycles of actuators such as cylinders, etc., according to threshold values.

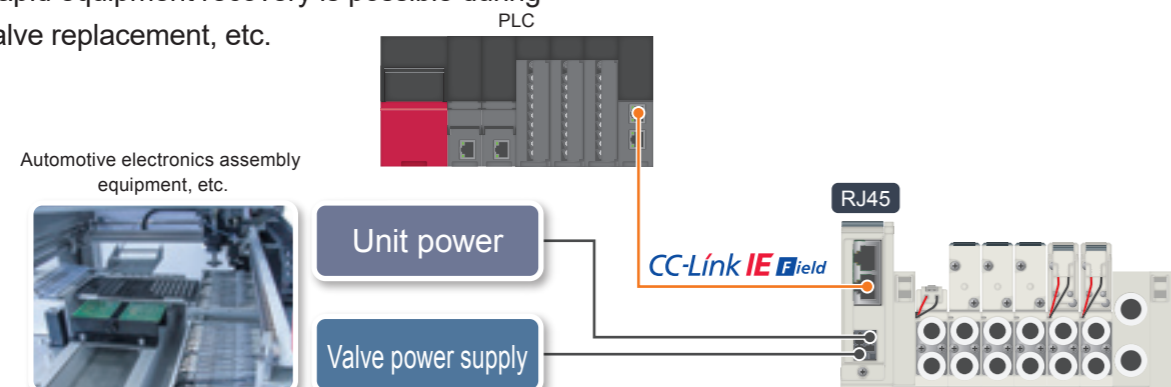
## Easy-to-use interface

### Separate power supply

Unit power supply and valve power supply are separated to enable separate power ON, so that the valve power supply can be turned OFF with the unit power supply ON. Rapid equipment recovery is possible during valve replacement, etc.

### RJ45 connector

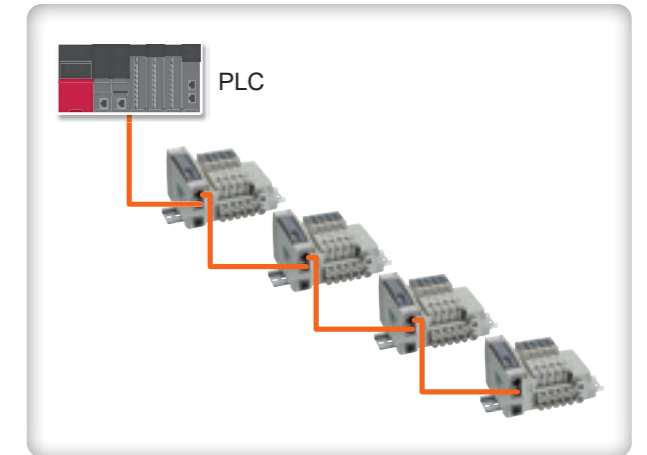
RJ45 connector adopted. General purpose equipment is convenient for acquiring cables, installation, etc.



## Plentiful wiring formats

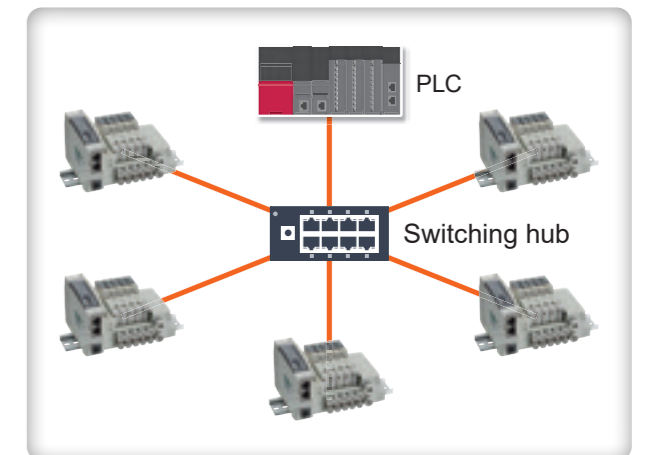
### Line wiring

This connection format enables all components to be connected on a single line. The simple structure enables shortened total wiring length.



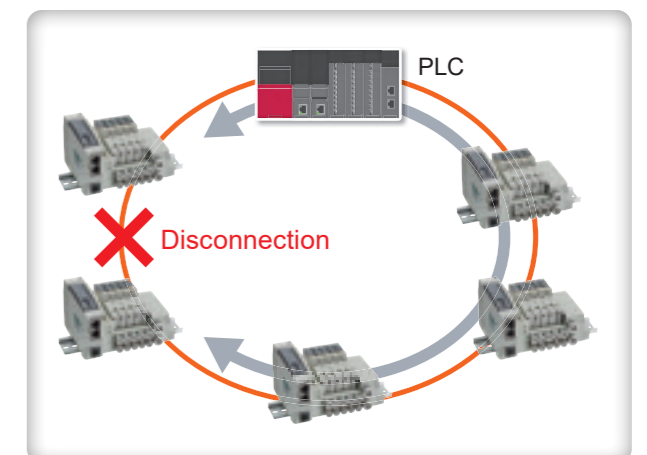
### Star wiring

This connection format connects the components in a radial shape with the Ethernet switch as the hub. Even if communication errors arise in some components, communication with the others can be maintained.



### Ring wiring

Even if one location is disconnected, reverse communication enables use as a doubled circuit preventing communication errors as well.



\*Line and star wiring can be combined.  
Ring wiring cannot be combined with other wiring formats.

## Various certifications acquired

Supports CE marking.  
It can also be shipped to the EU nations.



# M4G/MN4G-T8 Series

**Specifications** Refer to the Pneumatic Valves Catalog (No.CB-023SA) as well.

Item		T8TG1	T8TG2	T8TGP1	T8TGP2
Communication protocol		CC-Link IE TSN (Certification Class B *)			
Power supply voltage	Unit side	24 VDC ±10%			
	Valve side	24 VDC +10%, -5%			
Current consumption	Unit side	140mA or less			
	Valve side	15mA or less (excluding load current)			
Output		NPN output		PNP output	
No. of output points		16 point	32 point	16 point	32 point
LED Display	Power	PW,PW(V)			
	Communication	D Link, RUN/ERR, INFO, LINK/ACT (IN, OUT)			
Degree of protection		IP30 (IP20 with no connector connected)			
Output setting during communication error		Hold (hold all points final output) / Clear (clear all points output) *IP When setting the address, 1 output can be set at any point.			
IP address setting	1st to 3rd octets	Operates with the same value as the master			
	4th octet	Switch and software settings (setting: 1 to 254)			

\* Refer to the CC-Link IE TSN installation documentation for the Certification Class

## Individual specifications

### ● Metal base manifold

Item		M3G*1/M4G*1		M3G*2/M4G*2		M3G*3 /M4G*3	
		Direct Mount	DIN rail Mount	Direct Mount	DIN rail Mount	Direct Mount	DIN rail Mount
Max. station No.	Standard	20 stations	16 stations	20 stations	16 stations	16 stations	
	Internal pilot						
	External pilot	12 stations					
Max.No. of solenoids		T8TG*1:16 points		T8TG*2:32 points			

### ● Block manifold

Item		MN3G*1/MN4G*1		MN3G*2/MN4G*2	
		T8TG*1	T8TG*2	T8TG*1	T8TG*2
Max. station No.	Standard wiring	16 stations	24 stations	16 stations	20 stations
	Double wiring	8 stations	16 stations	8 stations	16 stations
Max.No. of solenoids		16 points	32 points	16 points	32 points

## Compatibility

### ● Metal base manifold

M3/4GA1 , M3/4GB1 , M3/4GD1 , M3/4GE1  
M3/4GA2 , M3/4GB2 , M3/4GD2 , M3/4GE2  
M3/4GA3 , M4GB3 , M3/4GD3 , M4GE3

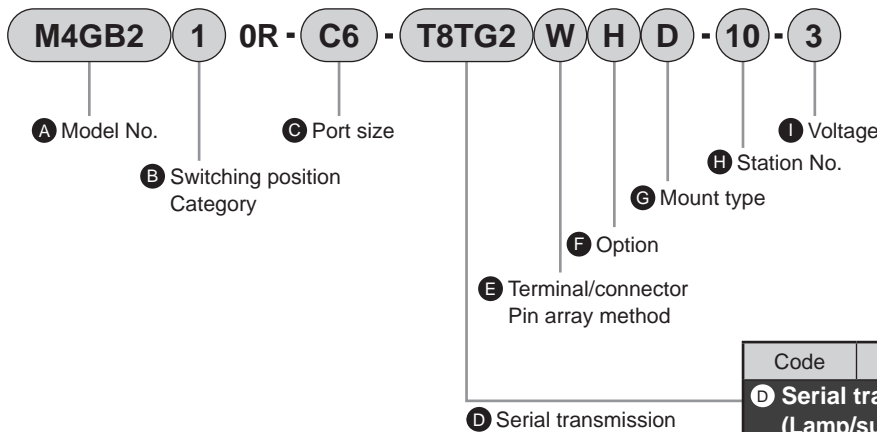
### ● Block manifold

MN3/4GA1 , MN3/4GB1 , MN3/4GD1 , MN3/4GE1  
MN3/4GA2 , MN3/4GB2 , MN3/4GD2 , MN3/4GE2

▲ Be sure to read the safety precautions in "Pneumatic Valves" (Catalog No. CB-023SA) before use.

### How to order

● Metal base manifold built-in model No. [Example]



\*Model Nos.

Only the model No. of serial transmission slave unit (T8TG\*) newly added is listed in this catalog. Refer to "Pneumatic Valves" (catalog No.CB-023SA) for details on the M4G Series (specifications, model No., etc.).

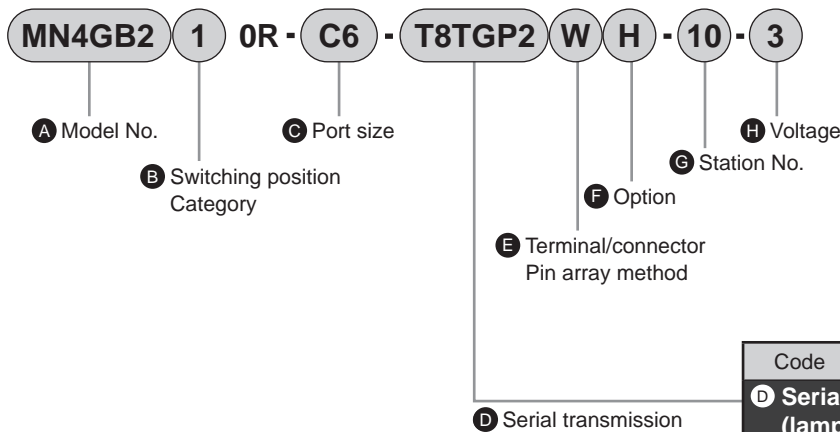
Code	Description
<b>D Serial transmission slave unit (Lamp/surge suppressor provided as standard)</b>	
<b>T8TG1</b>	Thin CC-Link IE TSN 16 point (NPN output)
<b>T8TG2</b>	Thin CC-Link IE TSN 32 point (NPN output)
<b>T8TGP1</b>	Thin CC-Link IE TSN 16 point (PNP output)
<b>T8TGP2</b>	Thin CC-Link IE TSN 32 point (PNP output)

[Example of model No.]

### M4GB210R-C6-T8TG2WHD-10-3

- A** Model No. : 5-port valve, base piping
- B** Solenoid position : 2-position single
- C** Port size :  $\varnothing 6$  push-in fitting
- D** Serial transmission : Thin CC-Link IE TSN 32 point (NPN output)
- E** Terminal/connector pin array : Double wiring
- F** Option : With exhaust check valve
- G** Mount type : DIN rail mount
- H** Station No. : 10 stations
- I** Voltage : 24 VDC

● Block manifold built-in model No. [Example]



\*Model Nos.

Only the model No. of Serial transmission slave unit (T8TG\*) newly added is listed in this catalog. Refer to "Pneumatic Valves" (Catalog No.CB-023SA) for details (specifications, model No., etc.) of the MN4G Series.

Code	Description
<b>D Serial transmission slave unit (lamp/surge suppressor provided as standard)</b>	
<b>T8TG1</b>	Thin CC-Link IE TSN 16 point (NPN output)
<b>T8TG2</b>	Thin CC-Link IE TSN 32 point (NPN output)
<b>T8TGP1</b>	Thin CC-Link IE TSN 16 point (PNP output)
<b>T8TGP2</b>	Thin CC-Link IE TSN 32 point (PNP output)

[Example of model No.]

### MN4GB210R-C6-T8TGP2WH-10-3

- A** Model No. : 5-port valve, base piping
- B** Solenoid position : 2-position single
- C** Port size :  $\varnothing 6$  push-in fitting
- D** Serial transmission : Thin CC-Link IE TSN 32 point (PNP output)
- E** Terminal/connector pin array : Double wiring
- F** Option : With exhaust check valve
- G** Station No. : 10 stations
- H** Voltage : 24 VDC

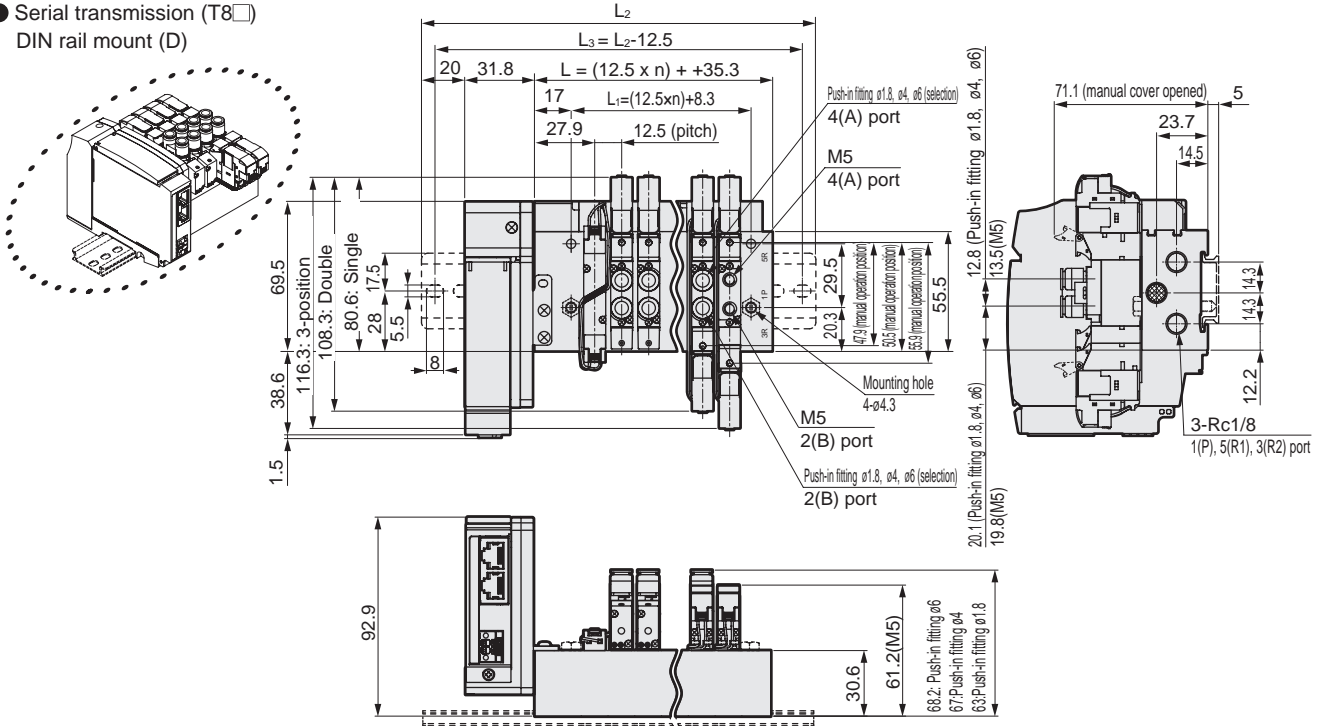
# M4GA1-T8\* Series

Reduced wiring manifolds; Body piping; Serial transmission

## Dimensions

### M4GA1

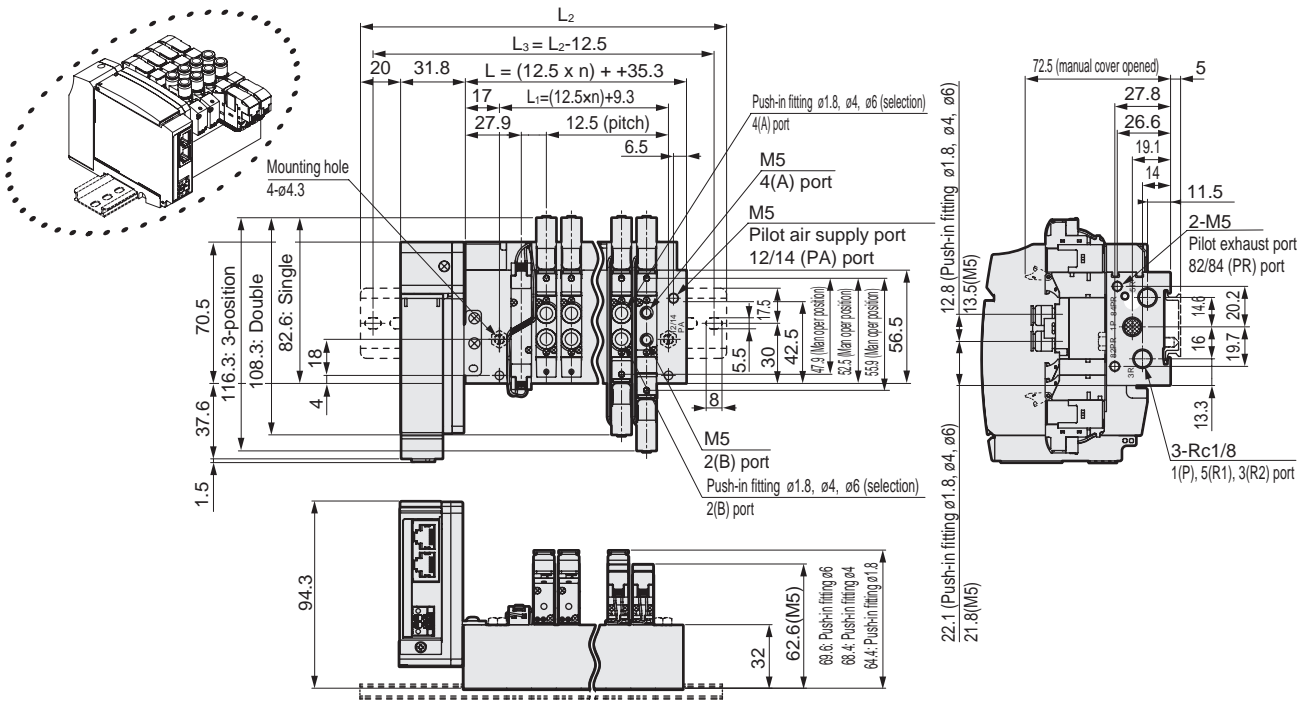
- Serial transmission (T8□)
- DIN rail mount (D)



Station No.	2	3	4	5	6	7	8	9	10	11	12	13	14	15	16	17	18	19	20
$L$	60.3	72.8	85.3	97.8	110.3	122.8	135.3	147.8	160.3	172.8	185.3	197.8	210.3	222.8	235.3	247.8	260.3	272.8	285.3
$L_1$	33.3	45.8	58.3	70.8	83.3	95.8	108.3	120.8	133.3	145.8	158.3	170.8	183.3	195.8	208.3	220.8	233.3	245.8	258.3
$L_2$	137.5	150.0	162.5	175.0	187.5	200.0	212.5	225.0	237.5	250.0	262.5	275.0	287.5	300.0	312.5				
$L_3$	125.0	137.5	150.0	162.5	175.0	187.5	200.0	212.5	225.0	237.5	250.0	262.5	275.0	287.5	300.0				

### M4GA1

- Serial transmission (T8□)
- DIN rail mounting (D); External pilot (K)



Station No.	2	3	4	5	6	7	8	9	10	11	12
$L$	60.3	72.8	85.3	97.8	110.3	122.8	135.3	147.8	160.3	172.8	185.3
$L_1$	34.3	46.8	59.3	71.8	84.3	96.8	109.3	121.8	134.3	146.8	159.3
$L_2$	137.5	150.0	162.5	175.0	187.5	200.0	212.5	225.0	237.5	250.0	262.5
$L_3$	125.0	137.5	150.0	162.5	175.0	187.5	200.0	212.5	225.0	237.5	250.0

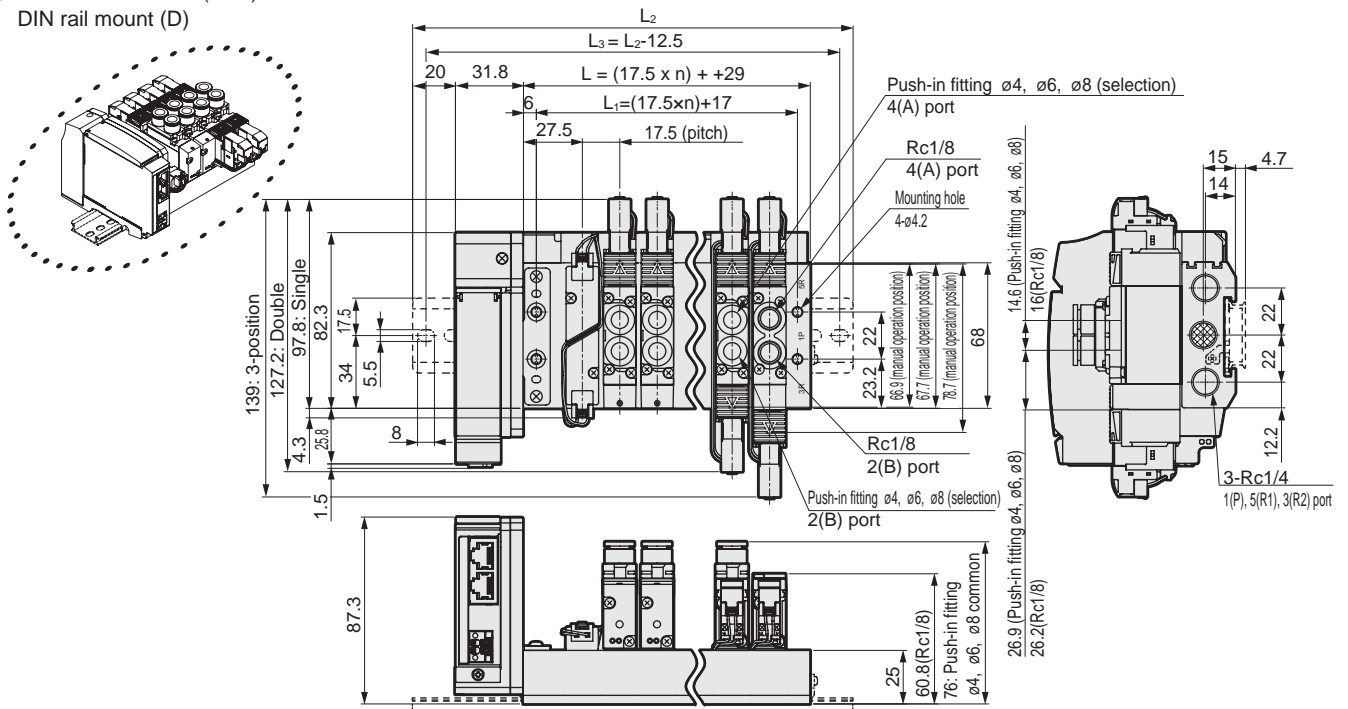
# M4GA2-T8\* Series

Reduced wiring manifolds; Body piping; Serial transmission

## Dimensions

### M4GA2

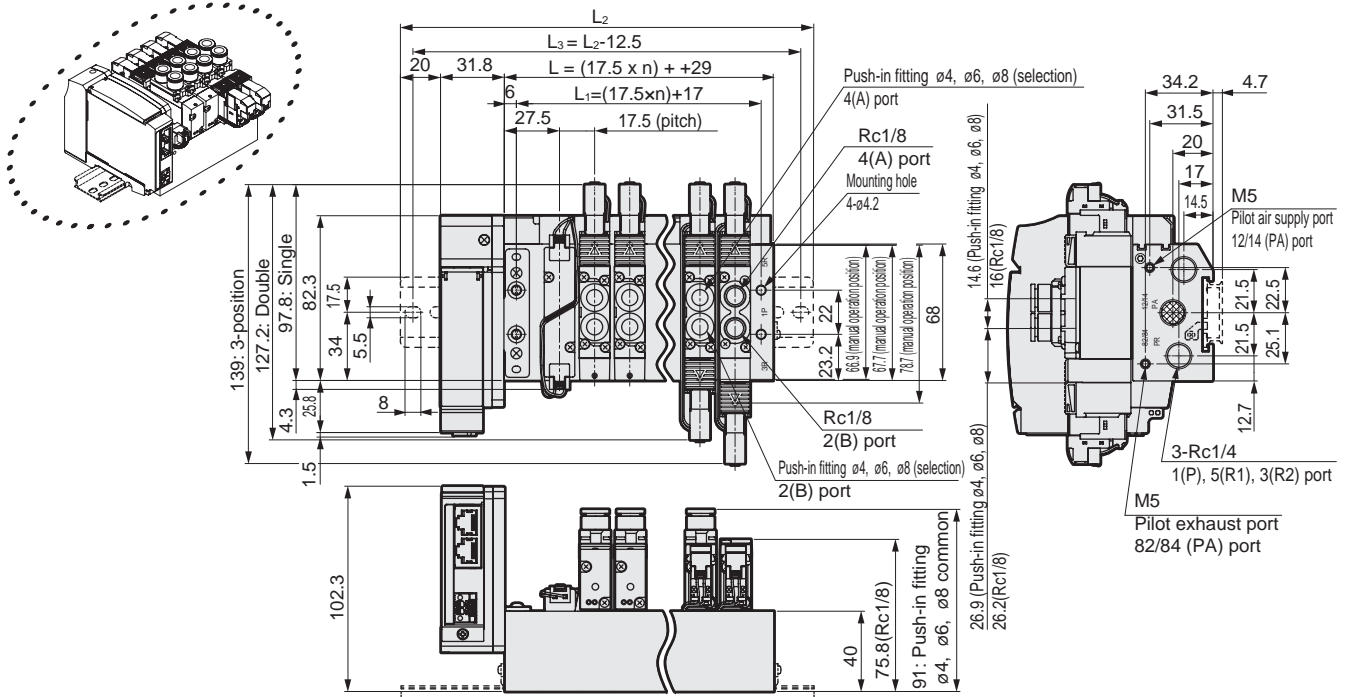
- Serial transmission (T8□)
- DIN rail mount (D)



Station No.	2	3	4	5	6	7	8	9	10	11	12	13	14	15	16	17	18	19	20
L	64.0	81.5	99.0	116.5	134.0	151.5	169.0	186.5	204.0	221.5	239.0	256.5	274.0	291.5	309.0	326.5	344.0	361.5	379.0
L <sub>1</sub>	52.0	69.5	87.0	104.5	122.0	139.5	157.0	174.5	192.0	209.5	227.0	244.5	262.0	279.5	297.0	314.5	332.0	349.5	367.0
L <sub>2</sub>	137.5	162.5	175.0	200.0	212.5	225.0	250.0	262.5	287.5	300.0	312.5	337.5	350.0	375.0	387.5				
L <sub>3</sub>	125.0	150.0	162.5	187.5	200.0	212.5	237.5	250.0	275.0	287.5	300.0	325.0	337.5	362.5	375.0				

### M4GA2

- Serial transmission (T8□)
- DIN rail mount (D); External pilot (K)



Station No.	2	3	4	5	6	7	8	9	10	11	12	13	14	15	16	17	18	19	20
L	64.0	81.5	99.0	116.5	134.0	151.5	169.0	186.5	204.0	221.5	239.0	256.5	274.0	291.5	309.0	326.5	344.0	361.5	379.0
L <sub>1</sub>	52.0	69.5	87.0	104.5	122.0	139.5	157.0	174.5	192.0	209.5	227.0	244.5	262.0	279.5	297.0	314.5	332.0	349.5	367.0
L <sub>2</sub>	137.5	162.5	175.0	200.0	212.5	225.0	250.0	262.5	287.5	300.0	312.5	337.5	350.0	375.0	387.5				
L <sub>3</sub>	125.0	150.0	162.5	187.5	200.0	212.5	237.5	250.0	275.0	287.5	300.0	325.0	337.5	362.5	375.0				

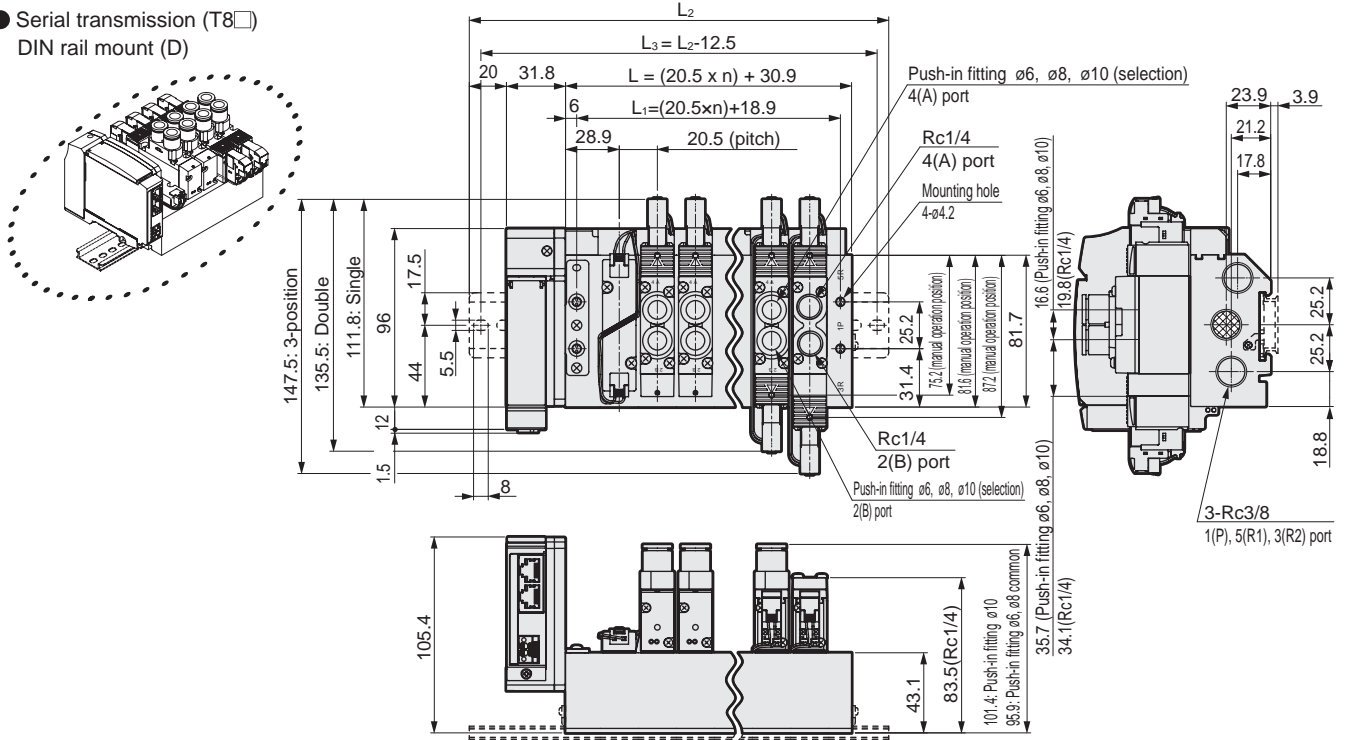
# M4GA1-T8\* Series

Reduced wiring manifolds; Body piping; Serial transmission

## Dimensions

### M4GA3

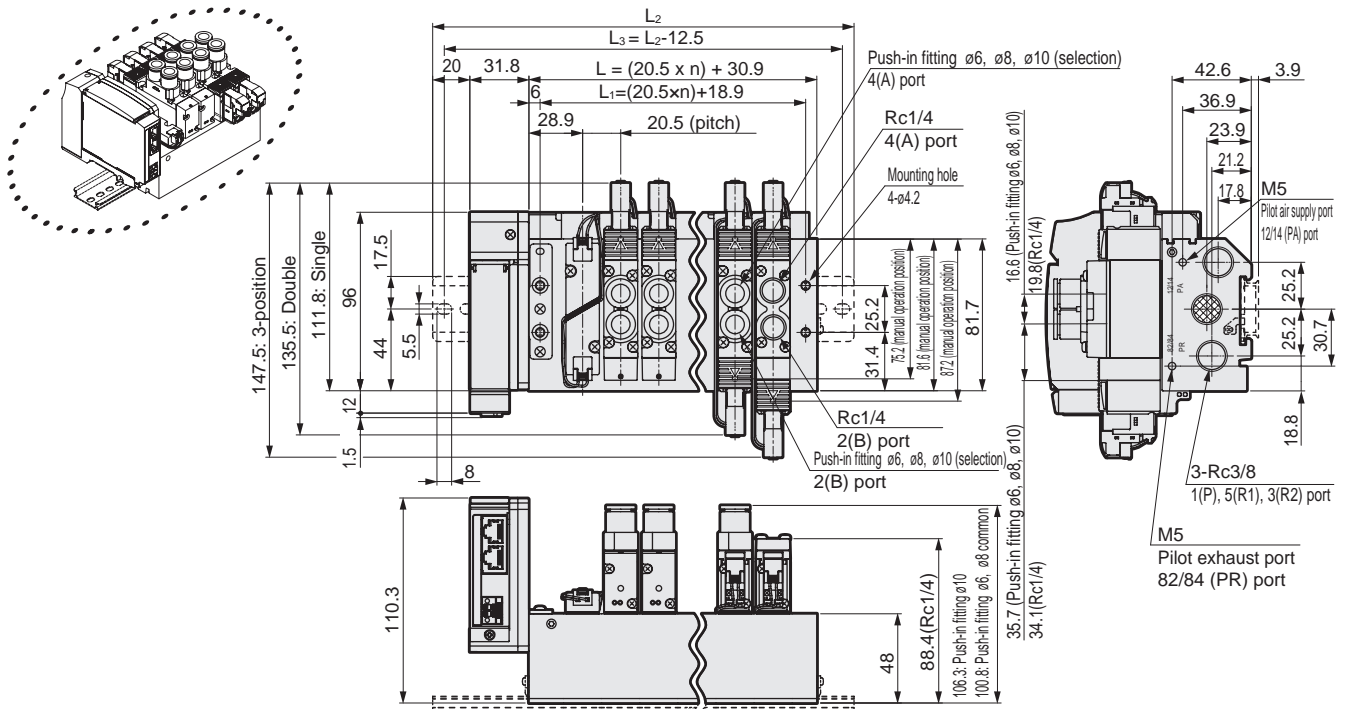
- Serial transmission (T8□)
- DIN rail mount (D)



Station No.	2	3	4	5	6	7	8	9	10	11	12	13	14	15	16
L	71.9	92.4	112.9	133.4	153.9	174.4	194.9	215.4	235.9	256.4	276.9	297.4	317.9	338.4	358.9
L <sub>1</sub>	59.9	80.4	100.9	121.4	141.9	162.4	182.9	203.4	223.9	244.4	264.9	285.4	305.9	326.4	346.9
L <sub>2</sub>	150.0	175.0	187.5	212.5	237.5	250.0	275.0	287.5	312.5	337.5	350.0	375.0	400.0	412.5	437.5
L <sub>3</sub>	137.5	162.5	175.0	200.0	225.0	237.5	262.5	275.0	300.0	325.0	337.5	362.5	387.5	400.0	425.0

### M4GA3

- Serial transmission (T8□)
- DIN rail mount (D); External pilot (K)



Station No.	2	3	4	5	6	7	8	9	10	11	12	13	14	15	16
L	71.9	92.4	112.9	133.4	153.9	174.4	194.9	215.4	235.9	256.4	276.9	297.4	317.9	338.4	358.9
L <sub>1</sub>	59.9	80.4	100.9	121.4	141.9	162.4	182.9	203.4	223.9	244.4	264.9	285.4	305.9	326.4	346.9
L <sub>2</sub>	150.0	175.0	187.5	212.5	237.5	250.0	275.0	287.5	312.5	337.5	350.0	375.0	400.0	412.5	437.5
L <sub>3</sub>	137.5	162.5	175.0	200.0	225.0	237.5	262.5	275.0	300.0	325.0	337.5	362.5	387.5	400.0	425.0

# M4GB1-T8\* Series

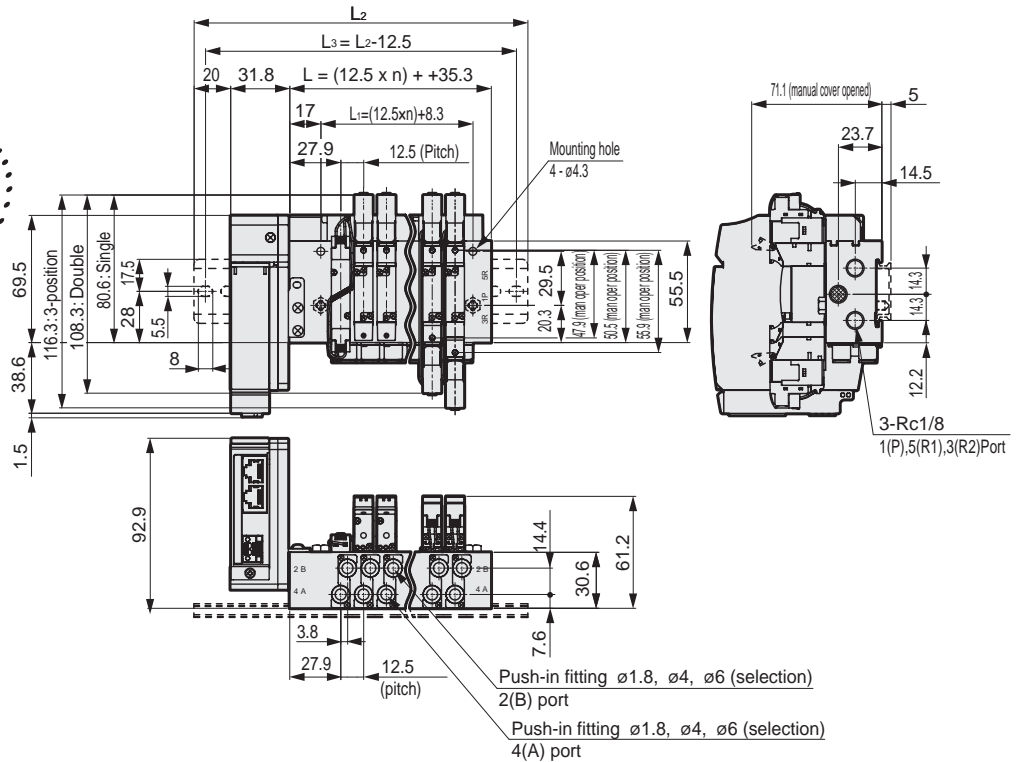
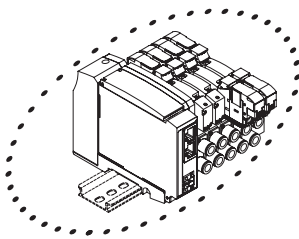
Reduced wiring manifolds; Base piping; Serial transmission

## Dimensions



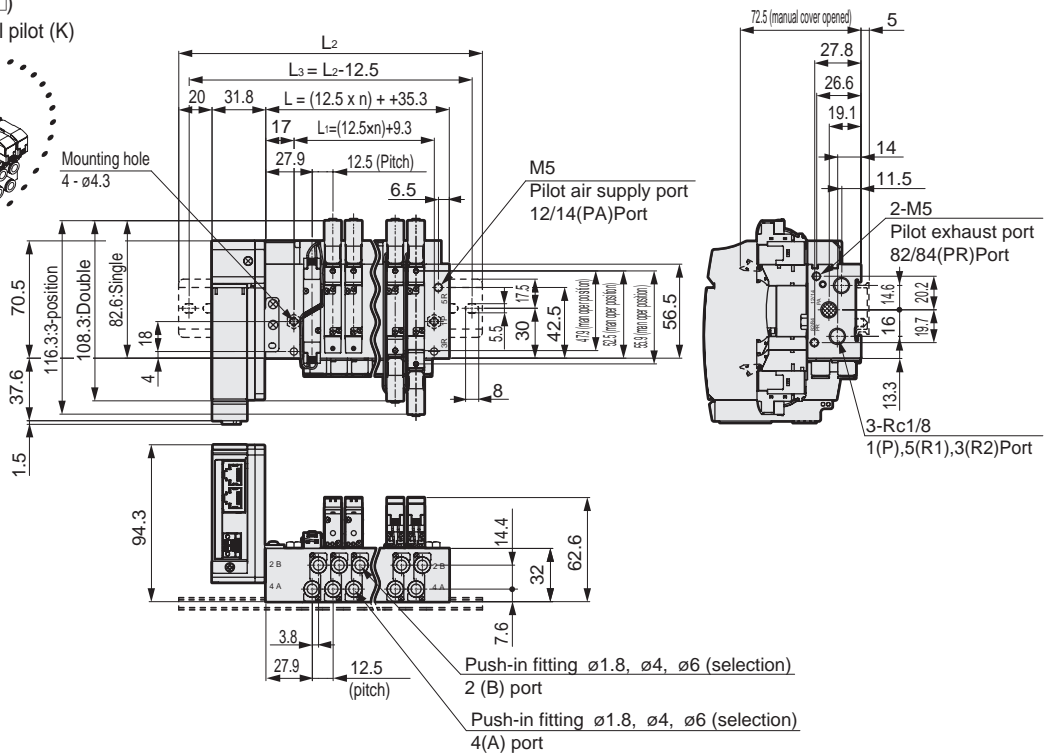
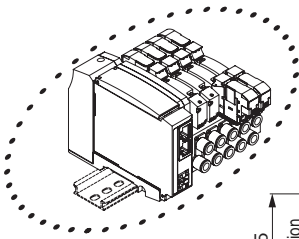
### M4GB1

- Serial transmission (T8□)  
DIN rail mount (D)



Station No.	2	3	4	5	6	7	8	9	10	11	12	13	14	15	16	17	18	19	20
L	60.3	72.8	85.3	97.8	110.3	122.8	135.3	147.8	160.3	172.8	185.3	197.8	210.3	222.8	235.3	247.8	260.3	272.8	285.3
L <sub>1</sub>	33.3	45.8	58.3	70.8	83.3	95.8	108.3	120.8	133.3	145.8	158.3	170.8	183.3	195.8	208.3	220.8	233.3	245.8	258.3
L <sub>2</sub>	137.5	150.0	162.5	175.0	187.5	200.0	212.5	225.0	237.5	250.0	262.5	275.0	287.5	300.0	312.5				
L <sub>3</sub>	125.0	137.5	150.0	162.5	175.0	187.5	200.0	212.5	225.0	237.5	250.0	262.5	275.0	287.5	300.0				

- Serial transmission (T8□)  
DIN rail mount (D); External pilot (K)



Station No.	2	3	4	5	6	7	8	9	10	11	12
L	60.3	72.8	85.3	97.8	110.3	122.8	135.3	147.8	160.3	172.8	185.3
L <sub>1</sub>	34.3	46.8	59.3	71.8	84.3	96.8	109.3	121.8	134.3	146.8	159.3
L <sub>2</sub>	137.5	150.0	162.5	175.0	187.5	200.0	212.5	225.0	237.5	250.0	262.5
L <sub>3</sub>	125.0	137.5	150.0	162.5	175.0	187.5	200.0	212.5	225.0	237.5	250.0



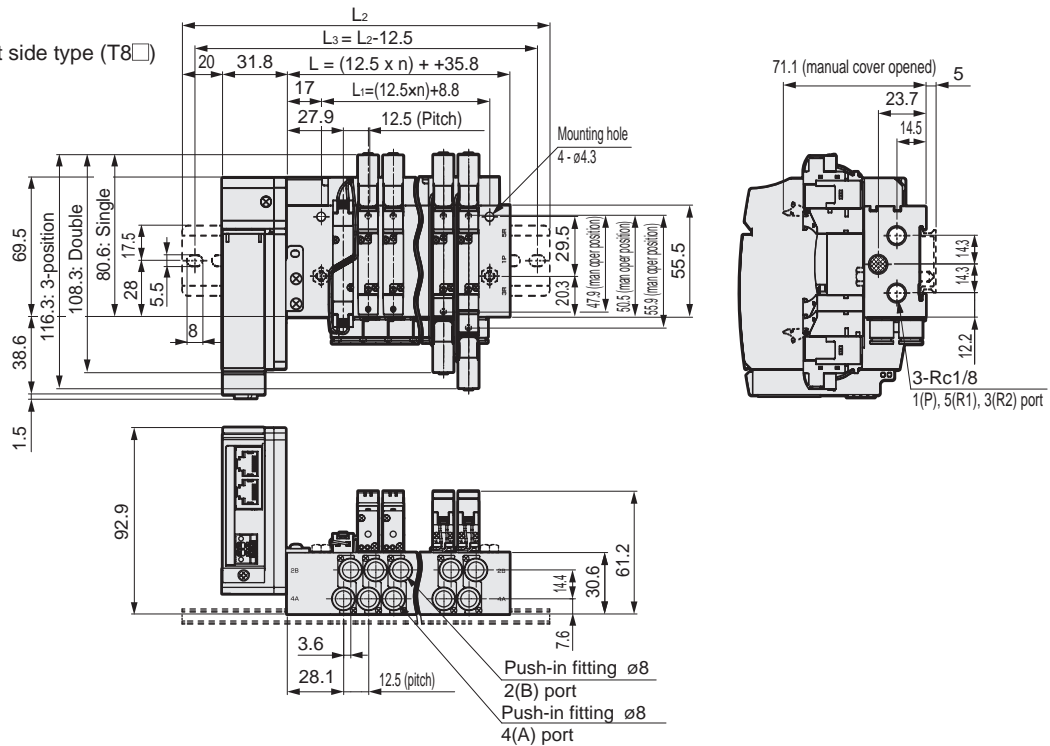
# M4GB1-T8\* Series

Reduced wiring manifolds; Base piping; Serial transmission

## Dimensions

### M4GB1-C8

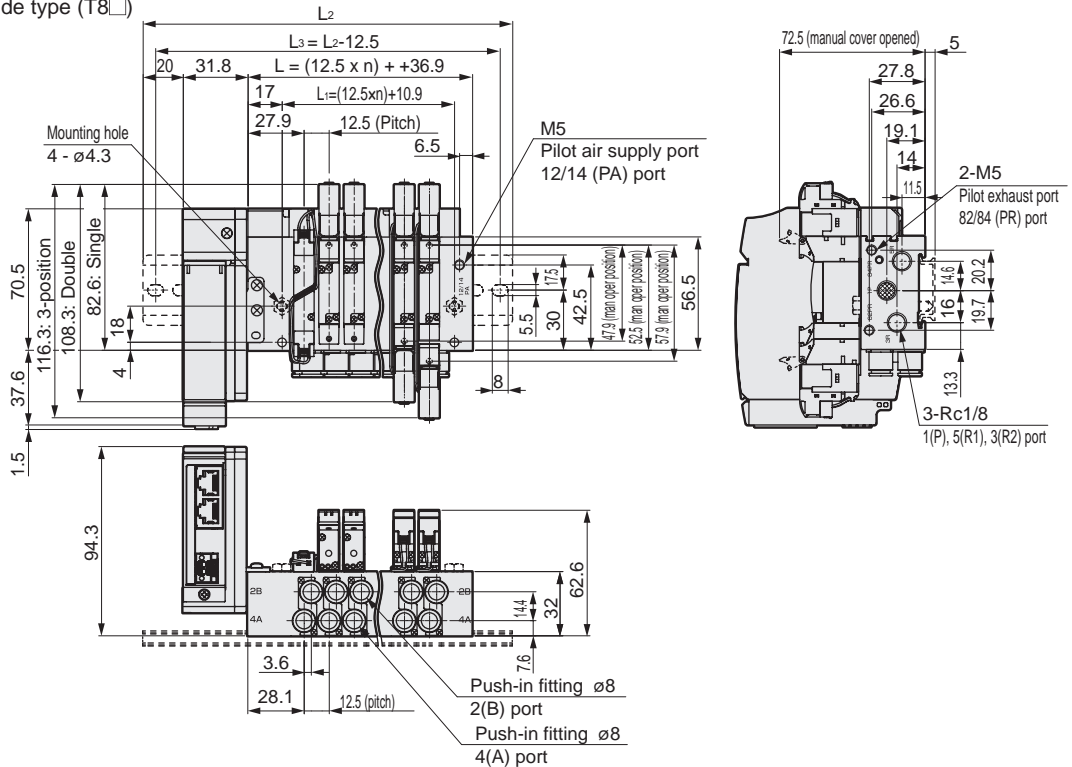
- Reduced wiring left side type (T8□)



Station No.	2	3	4	5	6	7	8	9	10	11	12	13	14	15	16	17	18	19	20
L	60.8	73.3	85.8	98.3	110.8	123.3	135.8	148.3	160.8	173.3	185.8	198.3	210.8	223.3	235.8	248.3	260.8	273.3	285.8
L <sub>1</sub>	33.8	46.3	58.8	71.3	83.8	96.3	108.8	121.3	133.8	146.3	158.8	171.3	183.8	196.3	208.8	221.3	233.8	246.3	258.8
L <sub>2</sub>	137.5	150.0	162.5	175.0	187.5	200.0	212.5	225.0	237.5	250.0	262.5	275.0	287.5	300.0	312.5				
L <sub>3</sub>	125.0	137.5	150.0	162.5	175.0	187.5	200.0	212.5	225.0	237.5	250.0	262.5	275.0	287.5	300.0				

- Reduced wiring left side type (T8□)

External pilot (K)

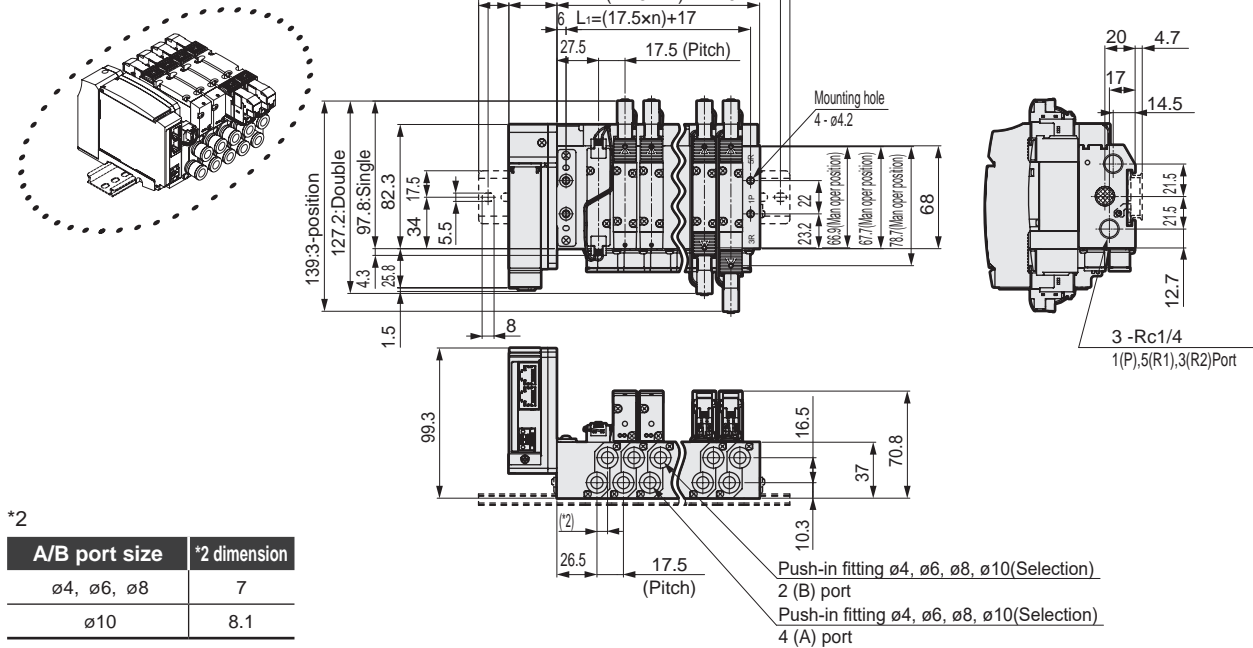


Station No.	2	3	4	5	6	7	8	9	10	11	12
L	61.9	74.4	86.9	99.4	111.9	124.4	136.9	149.4	161.9	174.4	186.9
L <sub>1</sub>	35.9	48.4	60.9	73.4	85.9	98.4	110.9	123.4	135.9	148.4	160.9
L <sub>2</sub>	137.5	150.0	162.5	175.0	187.5	200.0	212.5	225.0	237.5	250.0	262.5
L <sub>3</sub>	125.0	137.5	150.0	162.5	175.0	187.5	200.0	212.5	225.0	237.5	250.0

### Dimensions

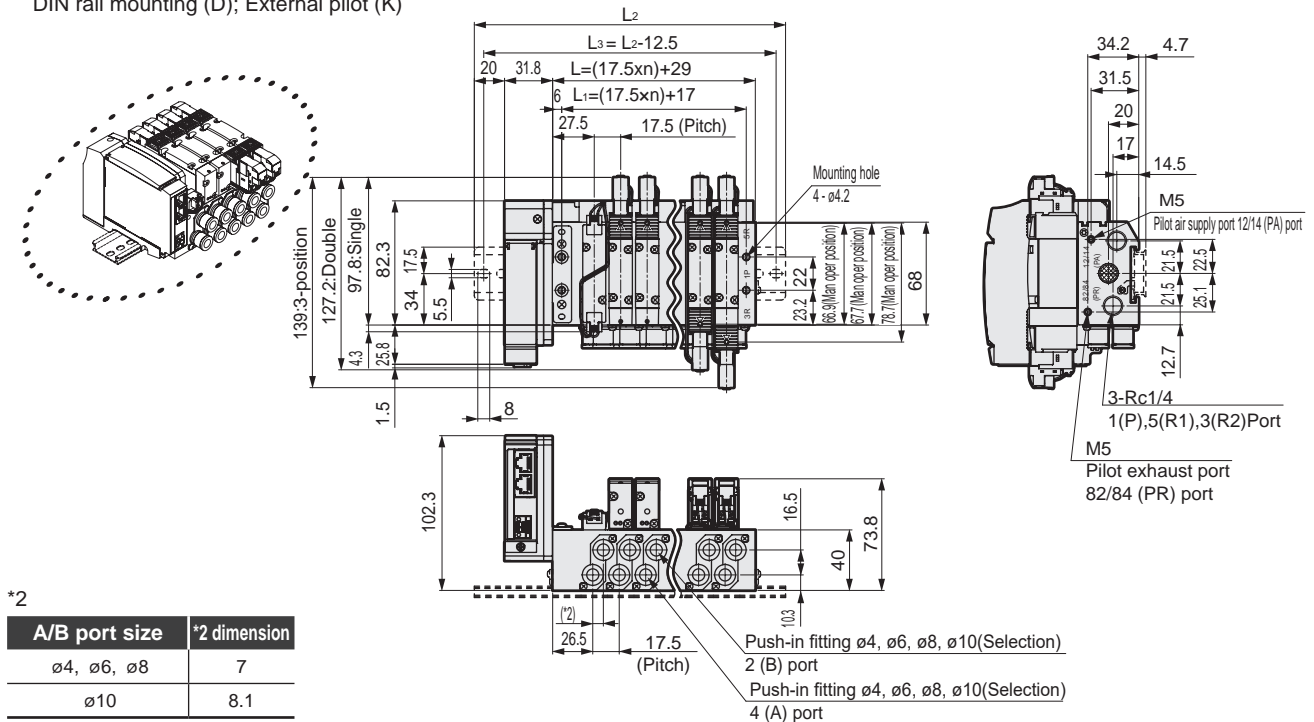
#### M4GB2

- Serial transmission (T8□)  
DIN rail mounting (D)



Station No.	2	3	4	5	6	7	8	9	10	11	12	13	14	15	16	17	18	19	20
L	64.0	81.5	99.0	116.5	134.0	151.5	169.0	186.5	204.0	221.5	239.0	256.5	274.0	291.5	309.0	326.5	344.0	361.5	379.0
L <sub>1</sub>	52.0	69.5	87.0	104.5	122.0	139.5	157.0	174.5	192.0	209.5	227.0	244.5	262.0	279.5	297.0	314.5	332.0	349.5	367.0
L <sub>2</sub>	137.5	162.5	175.0	200.0	212.5	225.0	250.0	262.5	287.5	300.0	312.5	337.5	350.0	375.0	387.5				
L <sub>3</sub>	125.0	150.0	162.5	187.5	200.0	212.5	237.5	250.0	275.0	287.5	300.0	325.0	337.5	362.5	375.0				

- Serial transmission (T8□)  
DIN rail mounting (D); External pilot (K)



Station No.	2	3	4	5	6	7	8	9	10	11	12	13	14	15	16	17	18	19	20
L	64.0	81.5	99.0	116.5	134.0	151.5	169.0	186.5	204.0	221.5	239.0	256.5	274.0	291.5	309.0	326.5	344.0	361.5	379.0
L <sub>1</sub>	52.0	69.5	87.0	104.5	122.0	139.5	157.0	174.5	192.0	209.5	227.0	244.5	262.0	279.5	297.0	314.5	332.0	349.5	367.0
L <sub>2</sub>	137.5	162.5	175.0	200.0	212.5	225.0	250.0	262.5	287.5	300.0	312.5	337.5	350.0	375.0	387.5				
L <sub>3</sub>	125.0	150.0	162.5	187.5	200.0	212.5	237.5	250.0	275.0	287.5	300.0	325.0	337.5	362.5	375.0				

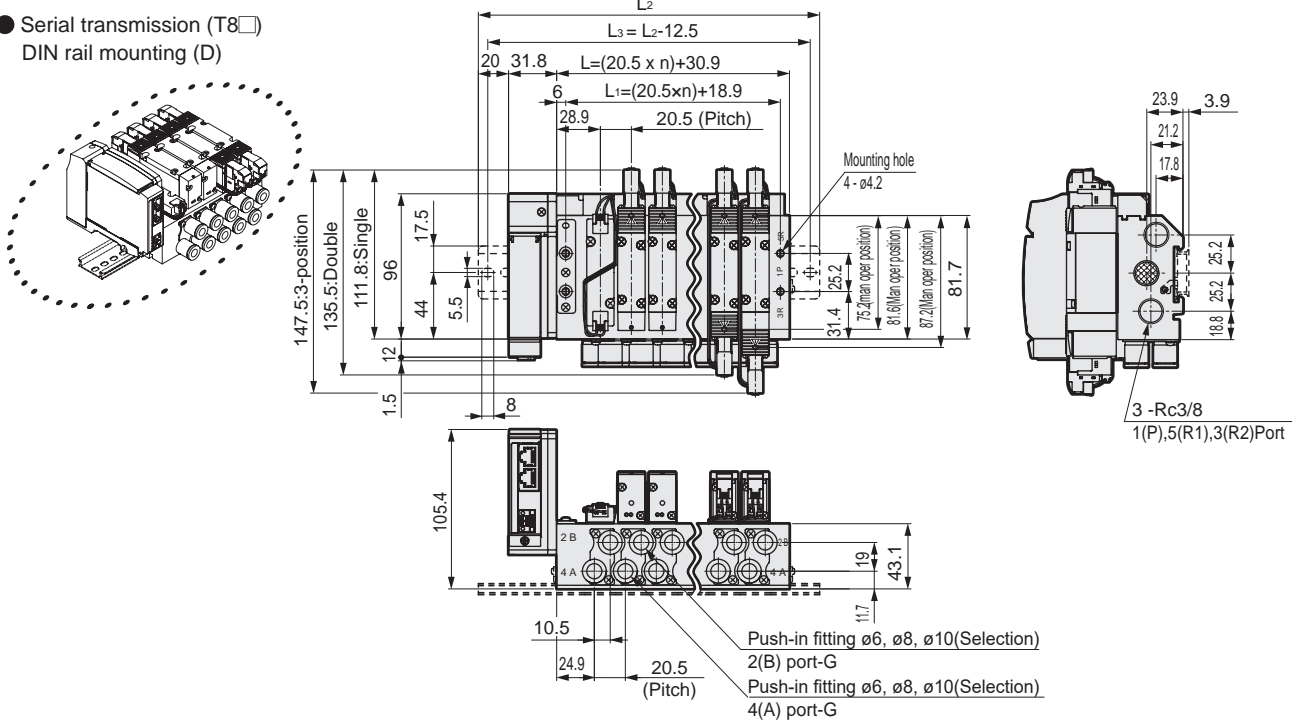
# M4GB3-T8\* Series

Reduced wiring manifolds; Base piping; Serial transmission

## Dimensions

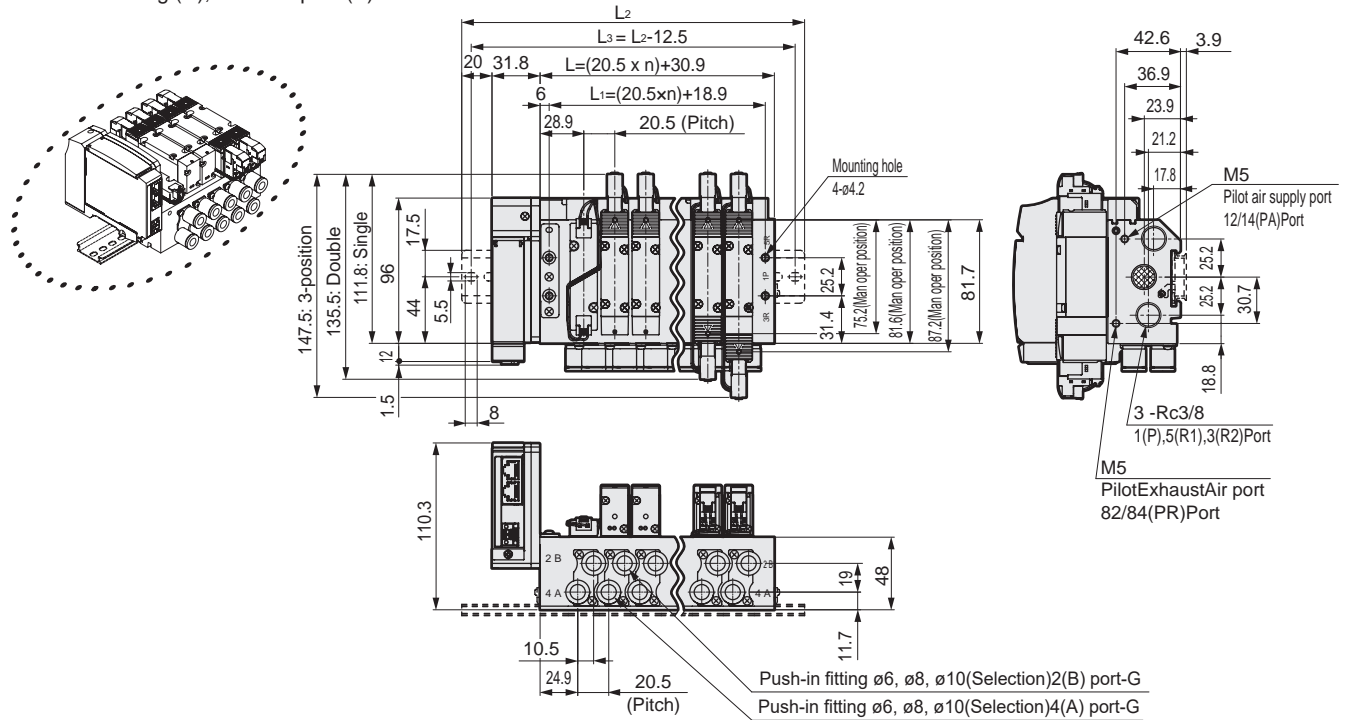
### M4GB3

- Serial transmission (T8□)  
DIN rail mounting (D)



Station No.	2	3	4	5	6	7	8	9	10	11	12	13	14	15	16
L	71.9	92.4	112.9	133.4	153.9	174.4	194.9	215.4	235.9	256.4	276.9	297.4	317.9	338.4	358.9
L <sub>1</sub>	59.9	80.4	100.9	121.4	141.9	162.4	182.9	203.4	223.9	244.4	264.9	285.4	305.9	326.4	346.9
L <sub>2</sub>	150.0	175.0	187.5	212.5	237.5	250.0	275.0	287.5	312.5	337.5	350.0	375.0	400.0	412.5	437.5
L <sub>3</sub>	137.5	162.5	175.0	200.0	225.0	237.5	262.5	275.0	300.0	325.0	337.5	362.5	387.5	400.0	425.0

- Serial transmission (T8□)  
DIN rail mounting (D); External pilot (K)



Station No.	2	3	4	5	6	7	8	9	10	11	12	13	14	15	16
L	71.9	92.4	112.9	133.4	153.9	174.4	194.9	215.4	235.9	256.4	276.9	297.4	317.9	338.4	358.9
L <sub>1</sub>	59.9	80.4	100.9	121.4	141.9	162.4	182.9	203.4	223.9	244.4	264.9	285.4	305.9	326.4	346.9
L <sub>2</sub>	150.0	175.0	187.5	212.5	237.5	250.0	275.0	287.5	312.5	337.5	350.0	375.0	400.0	412.5	437.5
L <sub>3</sub>	137.5	162.5	175.0	200.0	225.0	237.5	262.5	275.0	300.0	325.0	337.5	362.5	387.5	400.0	425.0

# MN4GA1/2-T8\* Series

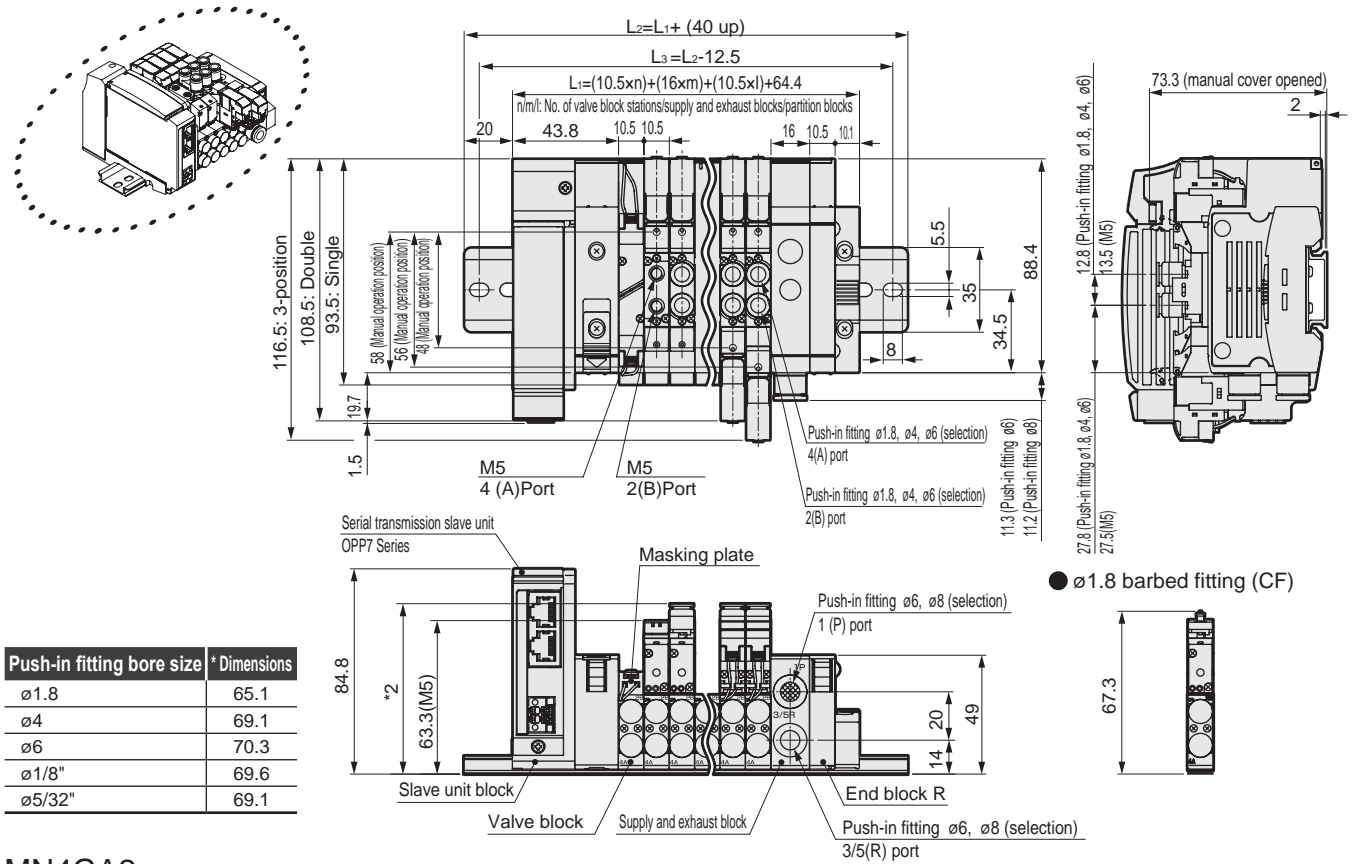
Reduced wiring block manifold: Body piping

## Dimensions

### MN4GA1

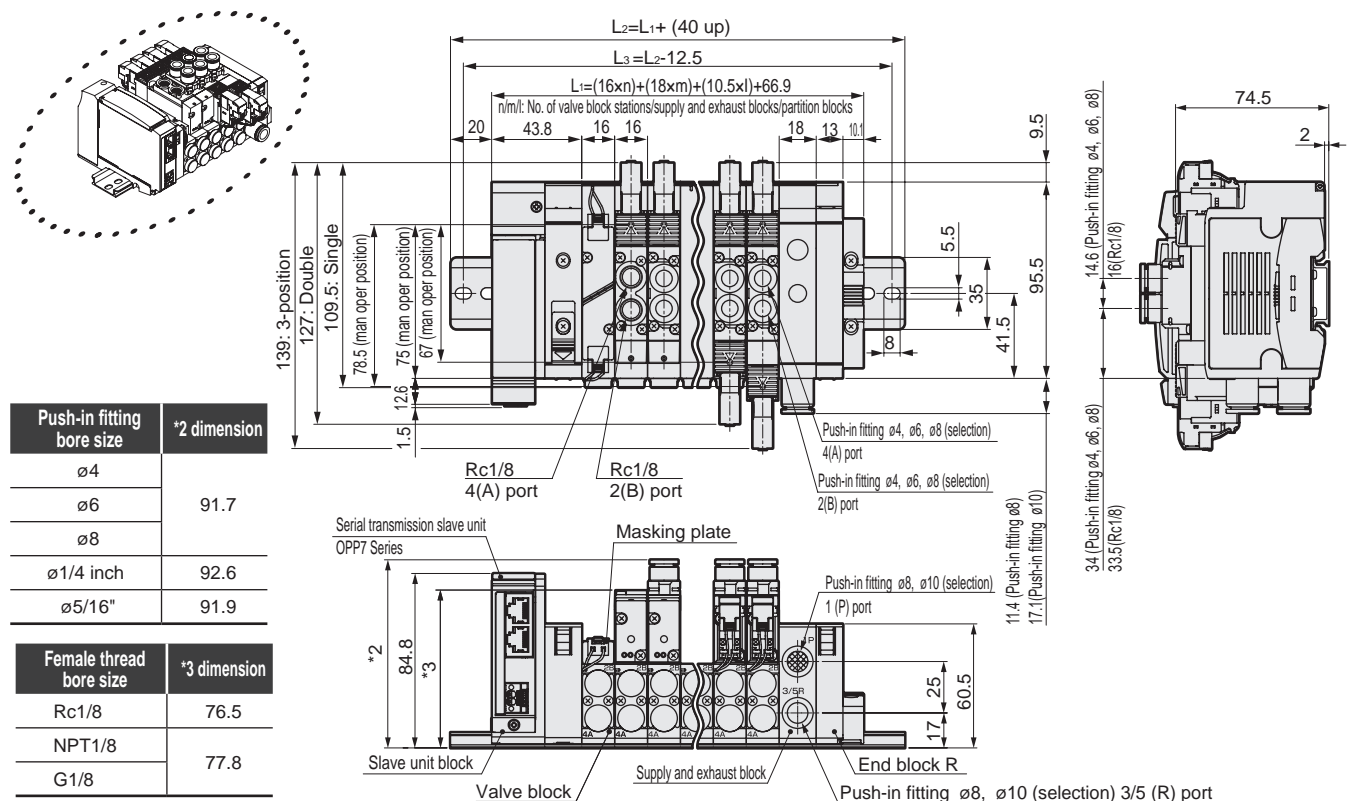
- Thin serial transmission (T8□)

Note: For the 2-position single 3-port valve, either port A or port B is a plug. In addition, the two 3-port valve built-in type has the same dimensions as the double model.



### MN4GA2

- Thin serial transmission (T8□)



# MN4GB1/2-T8\* Series

Reduced wiring block manifold; Base piping

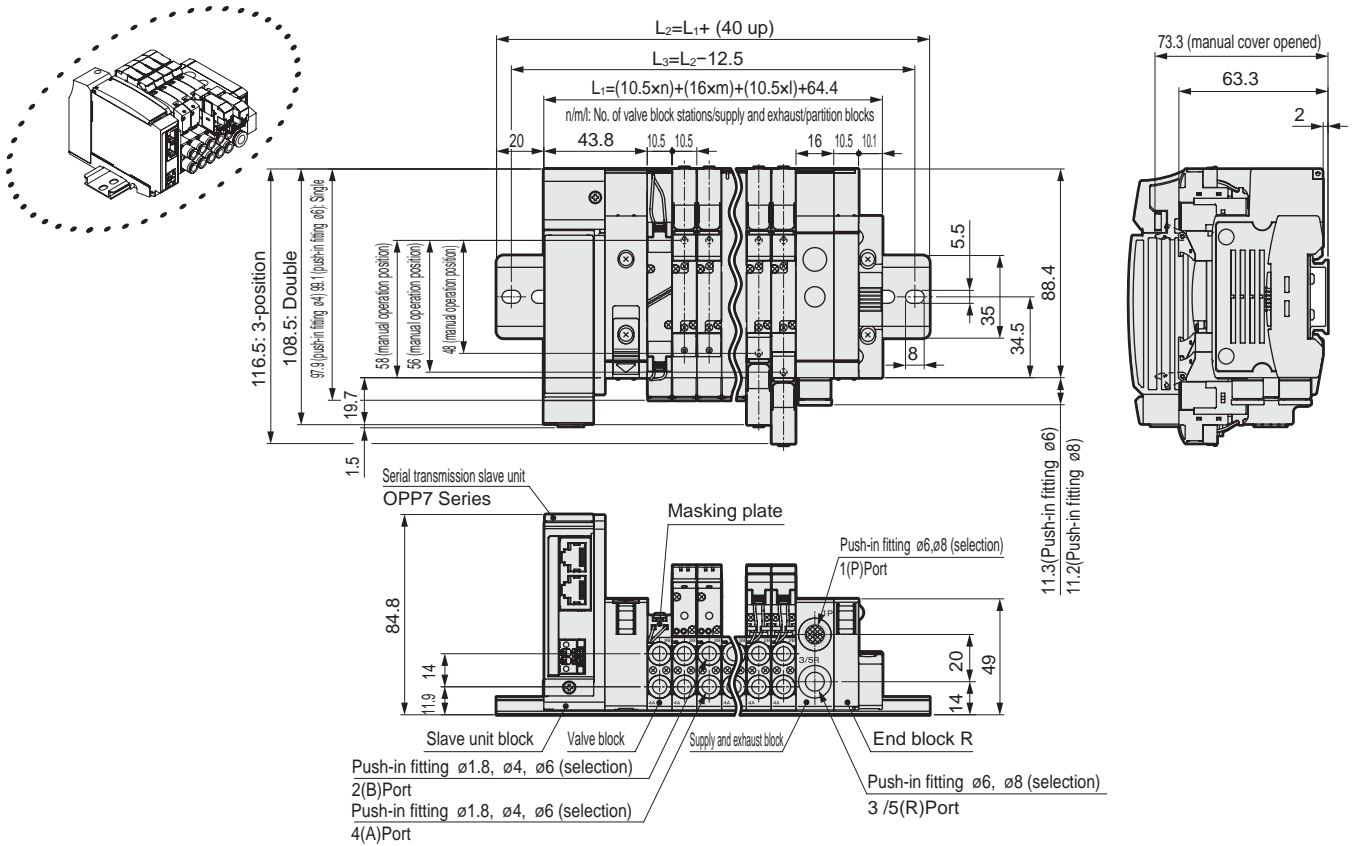
Dimensions



## MN4GB1

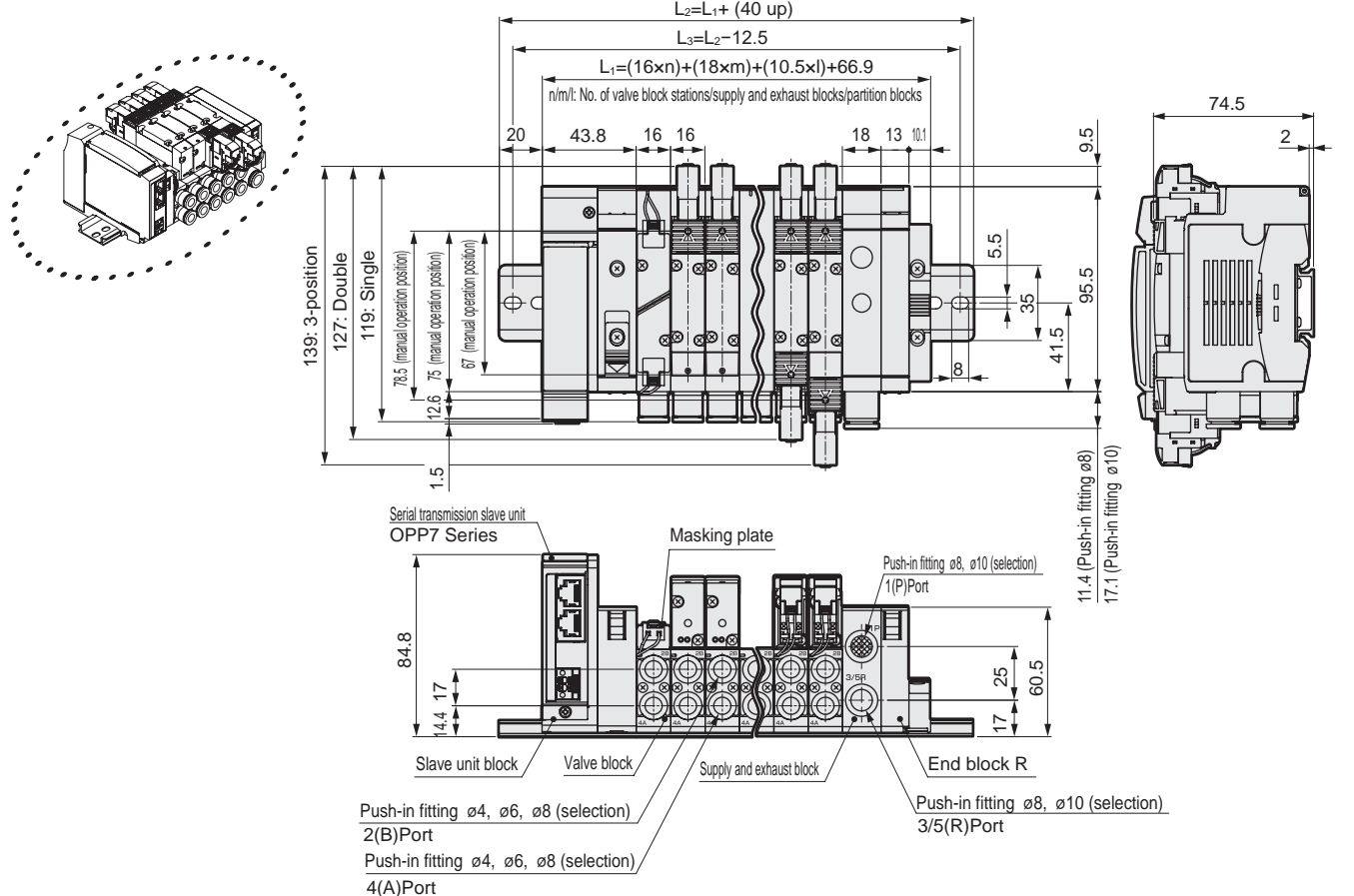
- Thin serial transmission (T8□)

Note: The two 3-port valve built-in type has the same dimensions as the double model.



## MN4GB2

- Thin serial transmission (T8□)





# M4GD2-T8\* Series

Reduced wiring manifolds; Body piping; Serial transmission

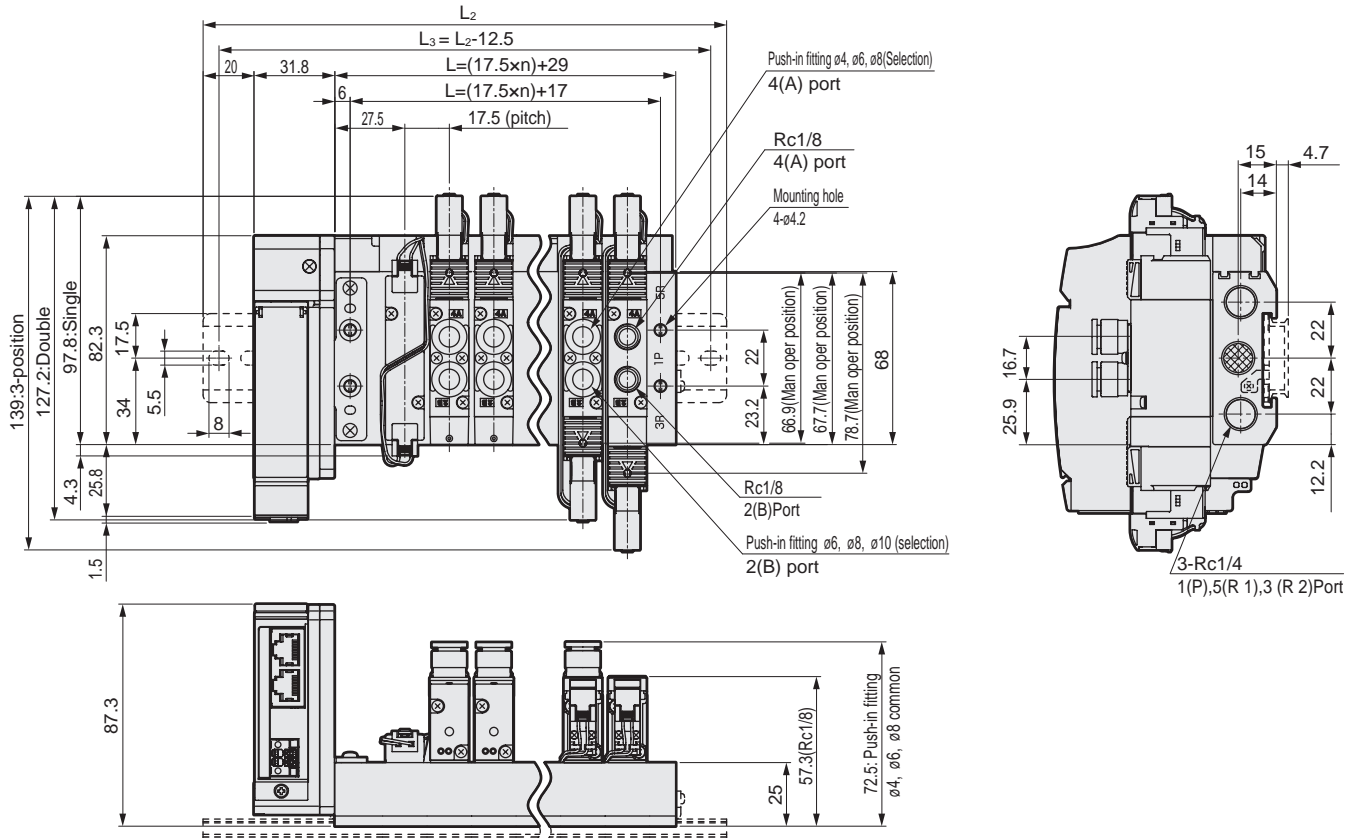
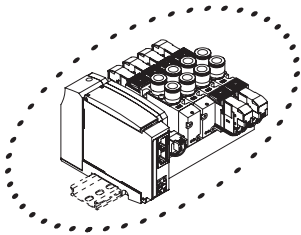
Dimensions



## M4GD2

- Serial transmission (T8)
- DIN rail mount (D)

\*For the 2-position single 3-port valve, either port A or port B is a plug.



Station No.	2	3	4	5	6	7	8	9	10	11	12	13	14	15	16	17	18	19	20
L	64.0	81.5	99.0	116.5	134.0	151.5	169.0	186.5	204.0	221.5	239.0	256.5	274.0	291.5	309.0	326.5	344.0	361.5	379.0
L <sub>1</sub>	52.0	69.5	87.0	104.5	122.0	139.5	157.0	174.5	192.0	209.5	227.0	244.5	262.0	279.5	297.0	314.5	332.0	349.5	367.0
L <sub>2</sub>	137.5	162.5	175.0	200.0	212.5	225.0	250.0	262.5	287.5	300.0	312.5	337.5	350.0	375.0	387.5				
L <sub>3</sub>	125.0	150.0	162.5	187.5	200.0	212.5	237.5	250.0	275.0	287.5	300.0	325.0	337.5	362.5	375.0				

# M4GD3-T8 Series

Reduced wiring manifolds; Body piping; Serial transmission

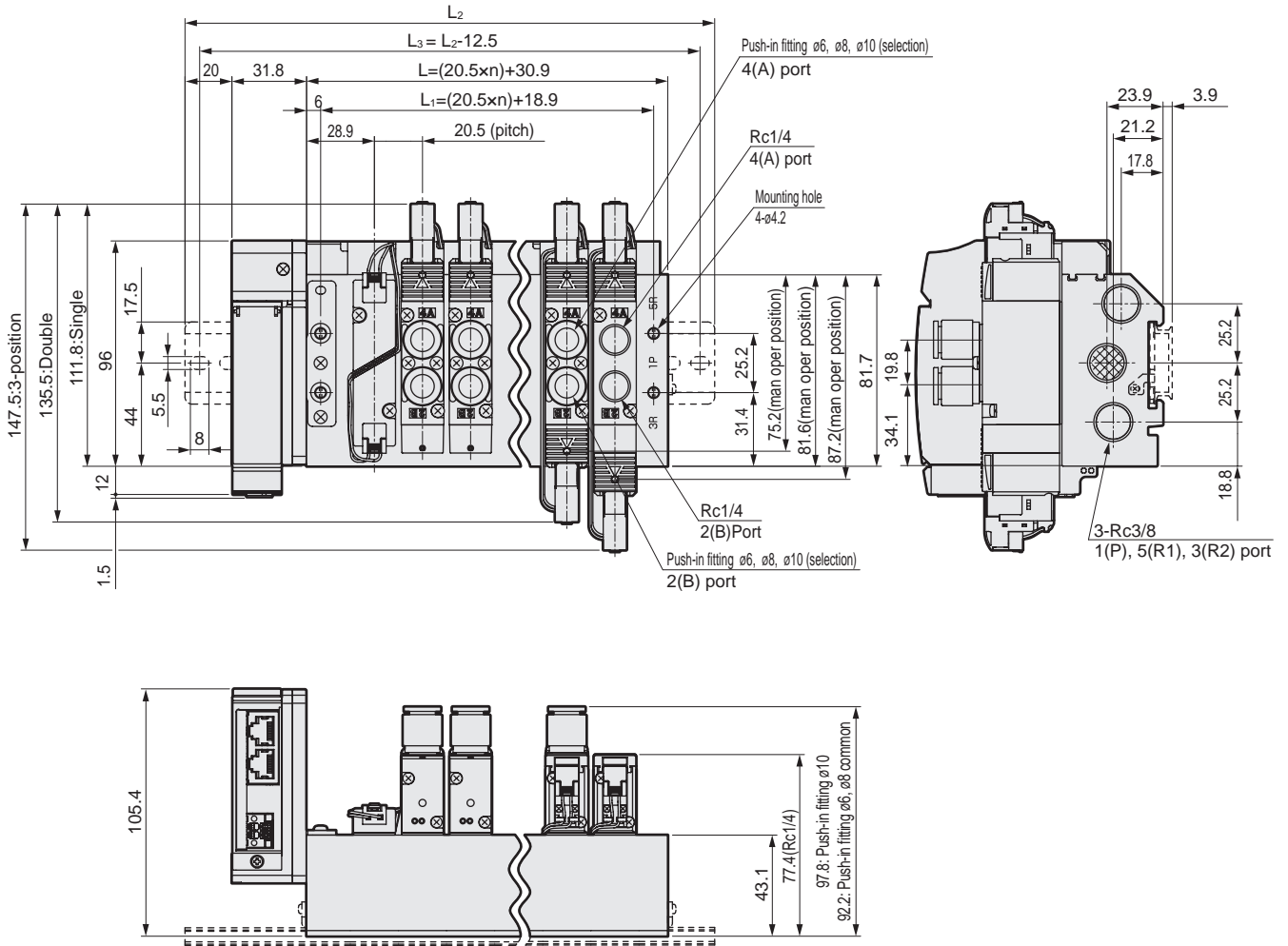
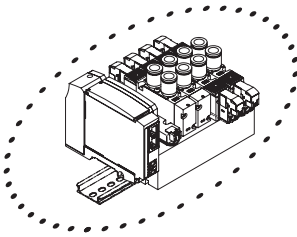
## Dimensions



### M4GD3

- Serial transmission (T8)
- DIN rail mount (D)

\*For the 2-position single 3-port valve, either port A or port B is a plug.



Station No.	2	3	4	5	6	7	8	9	10	11	12	13	14	15	16
L	71.9	92.4	112.9	133.4	153.9	174.4	194.9	215.4	235.9	256.4	276.9	297.4	317.9	338.4	358.9
L <sub>1</sub>	59.9	80.4	100.9	121.4	141.9	162.4	182.9	203.4	223.9	244.4	264.9	285.4	305.9	326.4	346.9
L <sub>2</sub>	150.0	175.0	187.5	212.5	237.5	250.0	275.0	287.5	312.5	337.5	350.0	375.0	400.0	412.5	437.5
L <sub>3</sub>	137.5	162.5	175.0	200.0	225.0	237.5	262.5	275.0	300.0	325.0	337.5	362.5	387.5	400.0	425.0



# M4GE1-T8\* Series

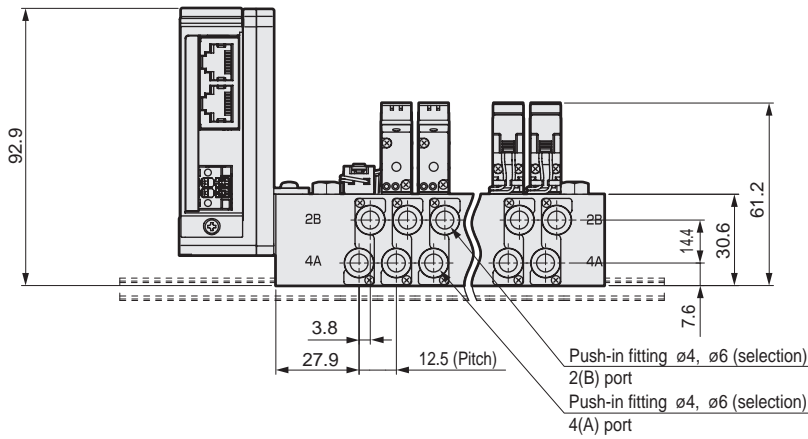
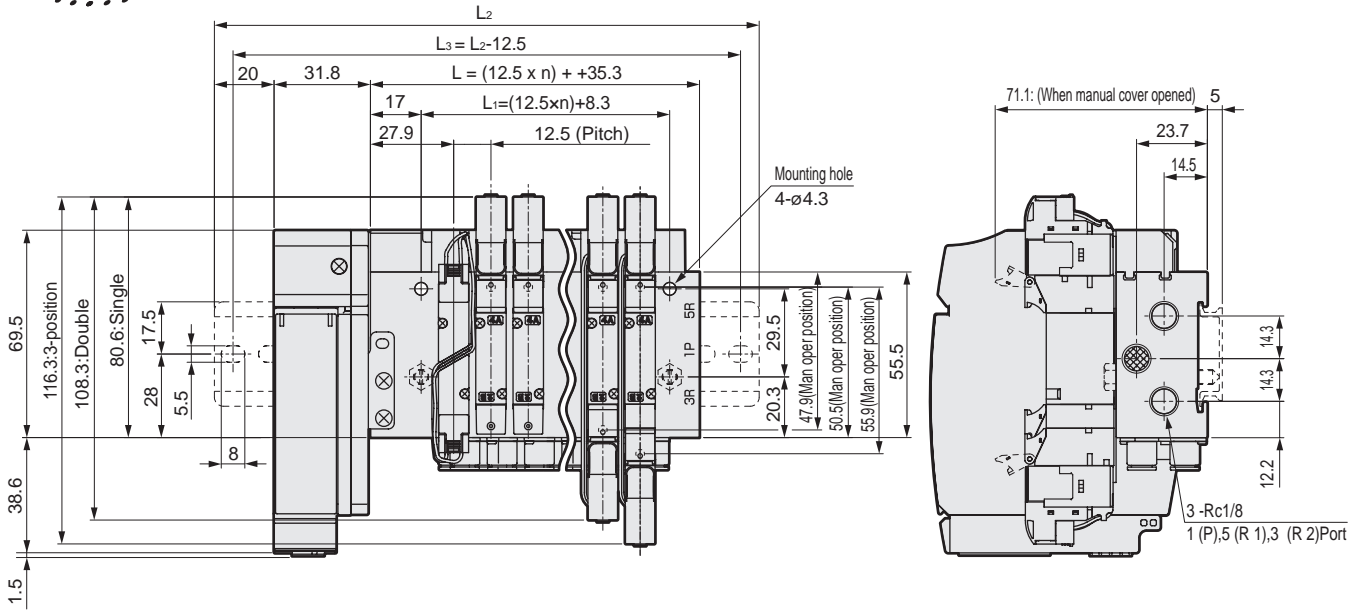
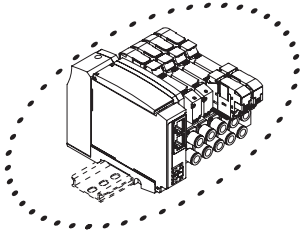
Reduced wiring manifolds; Base piping; Serial transmission

Dimensions 

## M4GE1

- Serial transmission (T8)  
DIN rail mounting (D)

\*The two 3-port valve built-in type has the same dimensions as the double model.



Station No.	2	3	4	5	6	7	8	9	10	11	12	13	14	15	16	17	18	19	20
L	60.3	72.8	85.3	97.8	110.3	122.8	135.3	147.8	160.3	172.8	185.3	197.8	210.3	222.8	235.3	247.8	260.3	272.8	285.3
L1	33.3	45.8	58.3	70.8	83.3	95.8	108.3	120.8	133.3	145.8	158.3	170.8	183.3	195.8	208.3	220.8	233.3	245.8	258.3
L2	137.5	150.0	162.5	175.0	187.5	200.0	212.5	225.0	237.5	250.0	262.5	275.0	287.5	300.0	312.5				
L3	125.0	137.5	150.0	162.5	175.0	187.5	200.0	212.5	225.0	237.5	250.0	262.5	275.0	287.5	300.0				

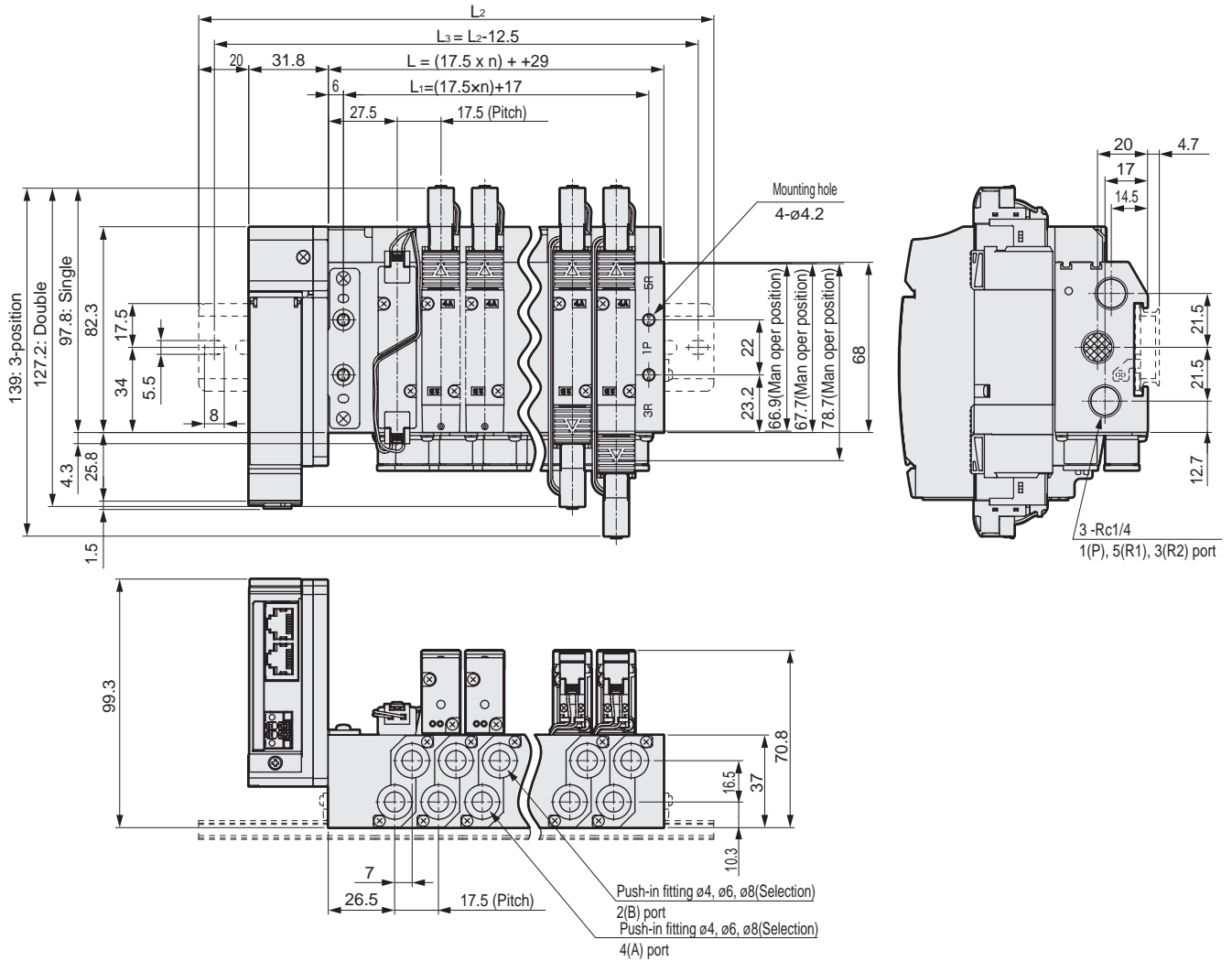
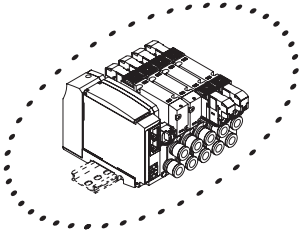
### Dimensions



### M4GE2

- Serial transmission (T8)  
DIN rail mounting (D)

\*The two 3-port valve built-in type has the same dimensions as the double model.



Station No.	2	3	4	5	6	7	8	9	10	11	12	13	14	15	16	17	18	19	20
L	64.0	81.5	99.0	116.5	134.0	151.5	169.0	186.5	204.0	221.5	239.0	256.5	274.0	291.5	309.0	326.5	344.0	361.5	379.0
L <sub>1</sub>	52.0	69.5	87.0	104.5	122.0	139.5	157.0	174.5	192.0	209.5	227.0	244.5	262.0	279.5	297.0	314.5	332.0	349.5	367.0
L <sub>2</sub>	137.5	162.5	175.0	200.0	212.5	225.0	250.0	262.5	287.5	300.0	312.5	337.5	350.0	375.0	387.5				
L <sub>3</sub>	125.0	150.0	162.5	187.5	200.0	212.5	237.5	250.0	275.0	287.5	300.0	325.0	337.5	362.5	375.0				

# M4GE3-T8\* Series

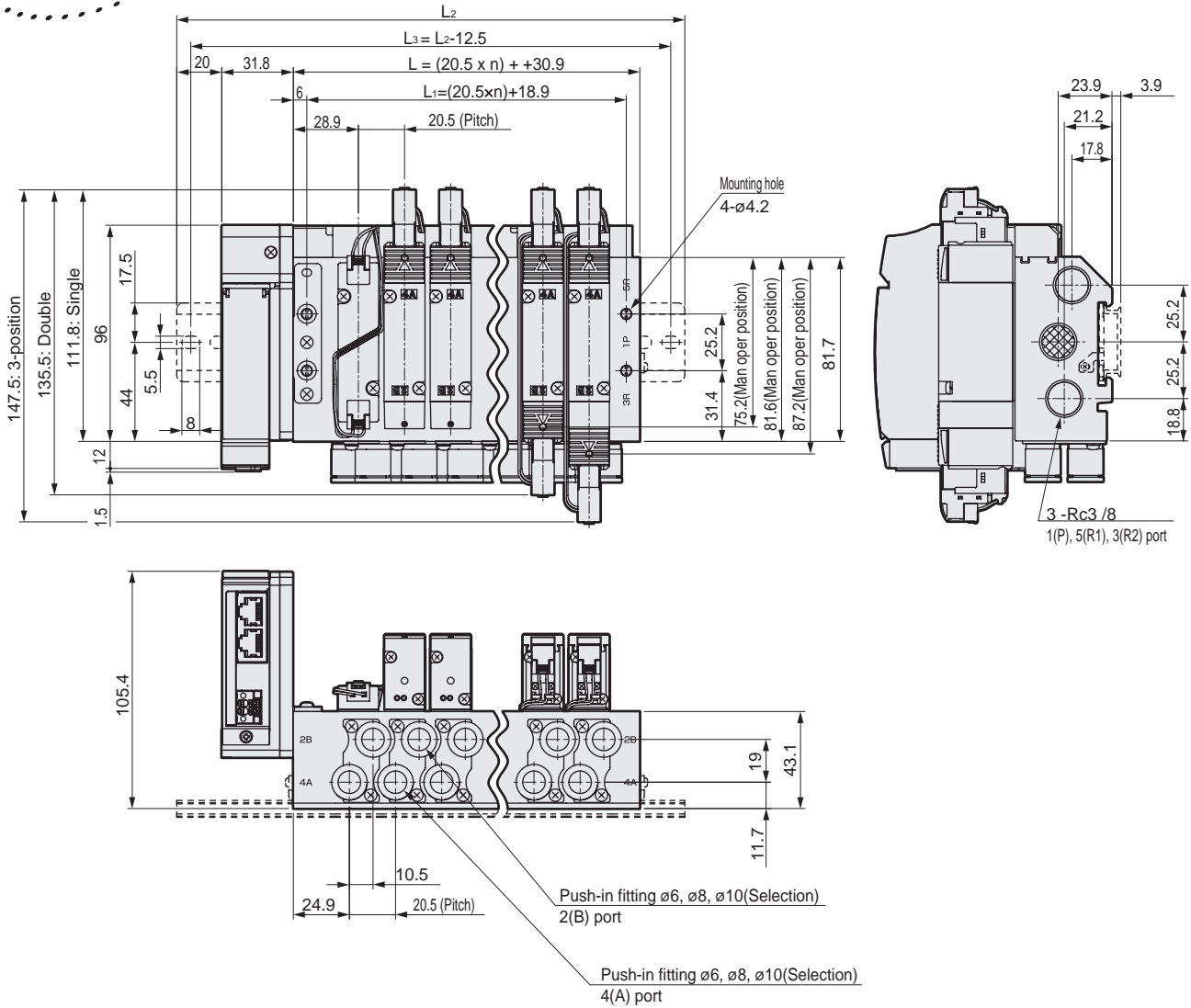
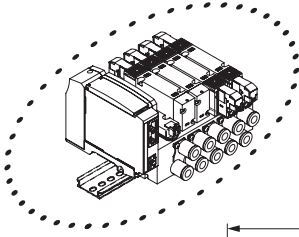
Reduced wiring manifolds; Base piping; Serial transmission

Dimensions



## M4GE3

- Serial transmission (T8)
- DIN rail mounting (D)



Station No.	2	3	4	5	6	7	8	9	10	11	12	13	14	15	16
L	71.9	92.4	112.9	133.4	153.9	174.4	194.9	215.4	235.9	256.4	276.9	297.4	317.9	338.4	358.9
L <sub>1</sub>	59.9	80.4	100.9	121.4	141.9	162.4	182.9	203.4	223.9	244.4	264.9	285.4	305.9	326.4	346.9
L <sub>2</sub>	150.0	175.0	187.5	212.5	237.5	250.0	275.0	287.5	312.5	337.5	350.0	375.0	400.0	412.5	437.5
L <sub>3</sub>	137.5	162.5	175.0	200.0	225.0	237.5	262.5	275.0	300.0	325.0	337.5	362.5	387.5	400.0	425.0

# MN4GD1/2-T8\* Series

Reduced wiring block manifold; Body piping

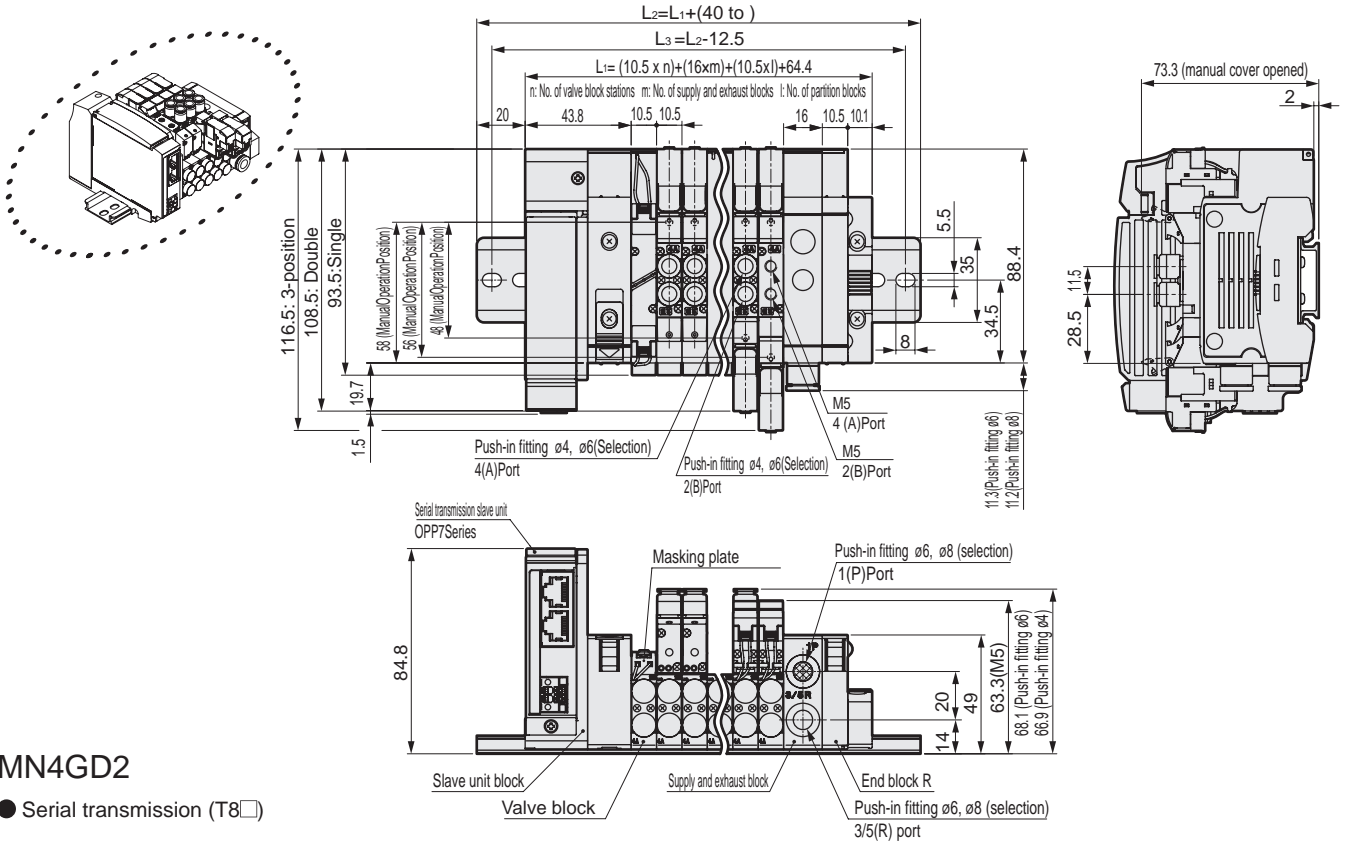
## Dimensions



### MN4GD1

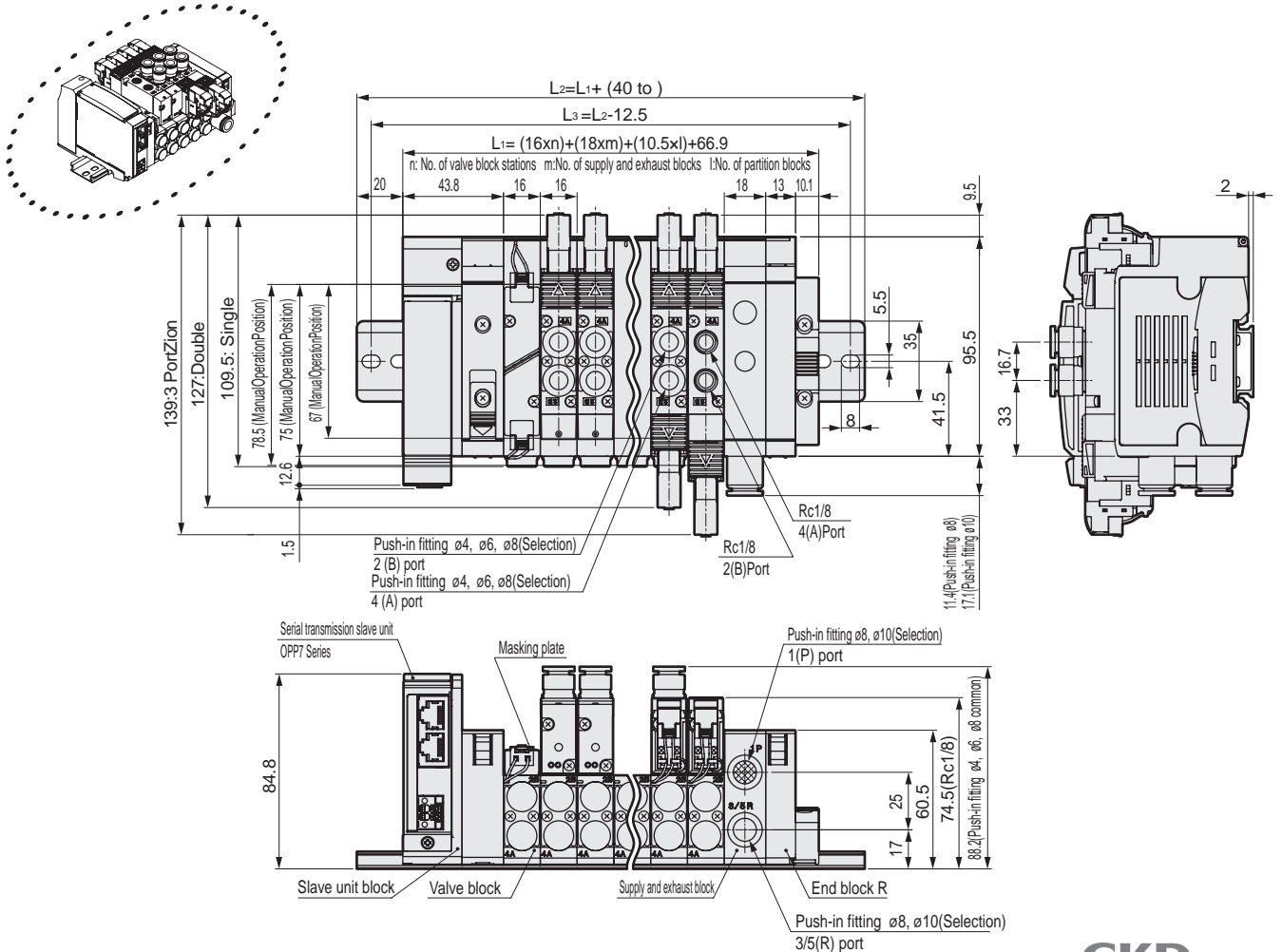
- Serial transmission (T8□)

Note: For the 2-position single 3-port valve, either port A or port B is a plug. In addition, the two 3-port valve built-in type has the same dimensions as the double model.




### MN4GD2

- Serial transmission (T8□)



# MN4GE1/2-T8\* Series

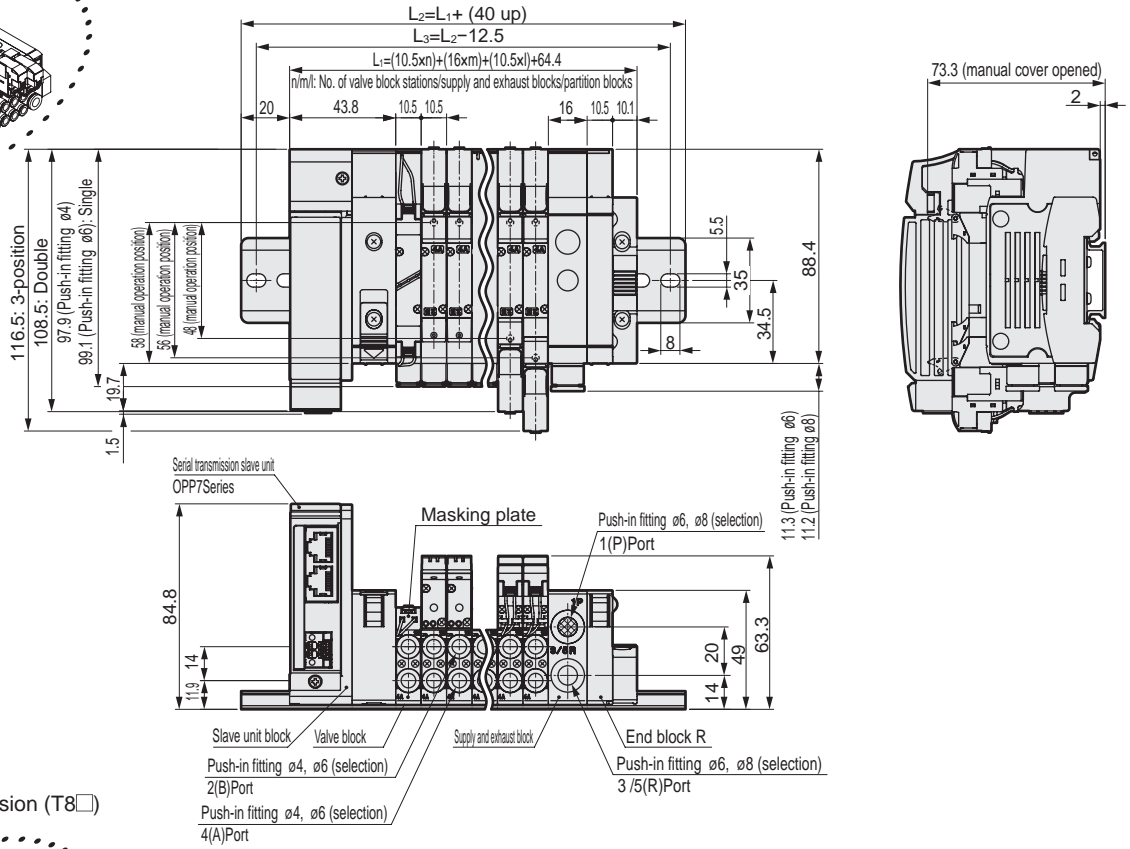
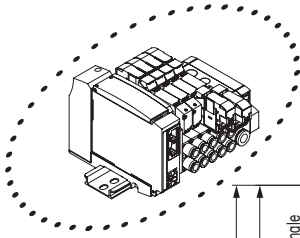
Reduced wiring block manifold; Base piping

Dimensions 

## MN4GE1

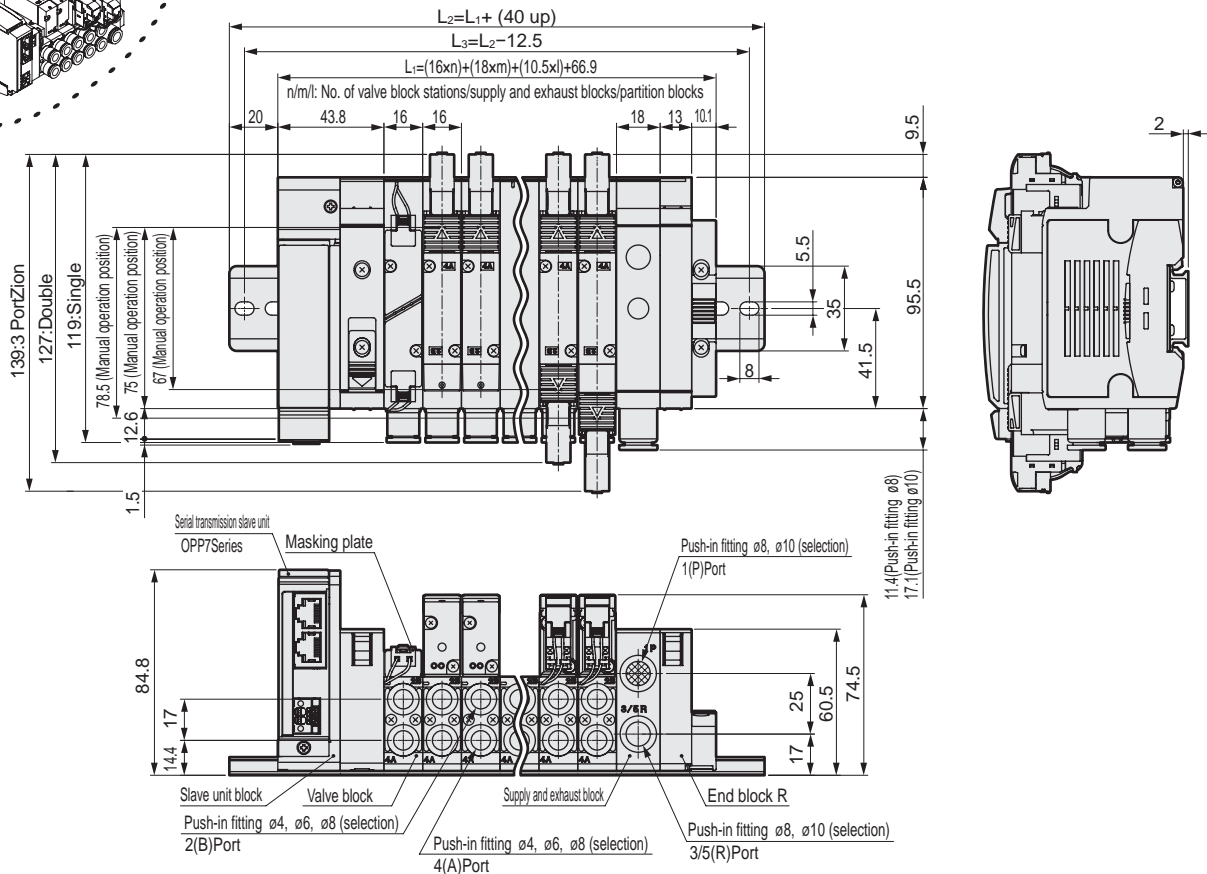
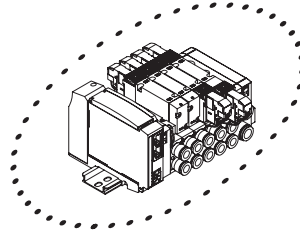
- Thin serial transmission (T8□)

Note: The two 3-port valve built-in type has the same dimensions as the double model.



## MN4GE2

- Thin serial transmission (T8□)



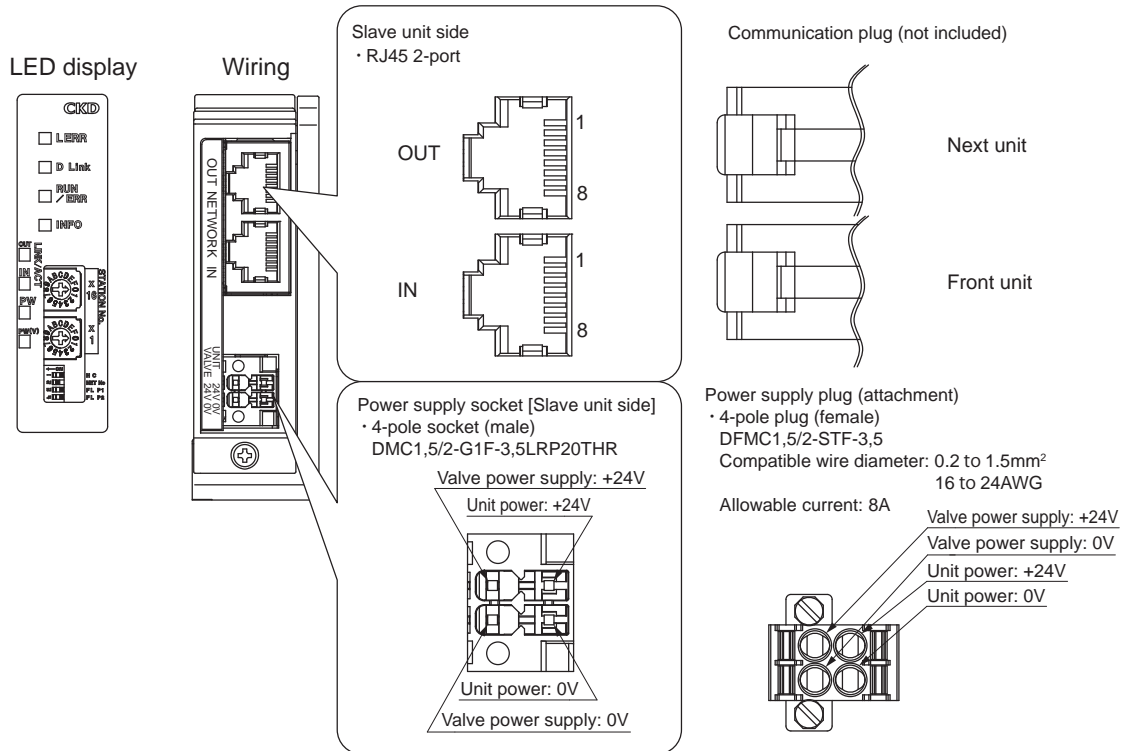
## Technical data

### Slave unit wiring

#### Wiring to the power supply socket

Power supply connectors are included with the product. However, any connector that can be mated with the following slave station side connector can be used.

DMC 1,5/2-G1F-3,5-LRP20THRR44 4-pole connector Manufactured by PHOENIX CONTACT GmbH & Co. KG



### LED display description

LED	Name	Display description
(1)	D Link	Communication status of CC-Link IE TSN is indicated by the LED state
(2)	RUN/ERR	Status of slave unit operation/communication is indicated by the LED state
(3)	INFO	Status of the slave unit is indicated by the LED state
(4)	Link/ACT	OUT(P1) Status of the Ethernet port (OUT side) is indicated by the LED state
(5)		IN(P2) Status of the Ethernet port (IN side) is indicated by the LED state
(6)	PW	Indicates the power status of the unit power supply. Lights when power is turned ON.
(7)	PW(V)	Indicates the power status of the valve power supply. Lights when power is turned ON. (Cannot be monitored when the unit power is not turned ON.)

### Communication plug pin array

Port	Pin	Signal name	Function
IN/ OUT	1	BI_DA+	Transmitted/received data, positive
	2	BI_DA-	Transmitted/received data, negative
	3	BI_DB+	Transmitted/received data, positive
	4	BI_DC+	Transmitted/received data, positive
	5	BI_DC-	Transmitted/received data, negative
	6	BI_DB-	Transmitted/received data, negative
	7	BI_DD+	Transmitted/received data, positive
	8	BI_DD-	Transmitted/received data, negative

\* 100BASE-T (Cat.5e) compliant

# M4G1 Serial Transmission Thin type

## M4G<sup>A B D E</sup> 1-T8 Manifold specifications sheet

Date issued / /  
 Company \_\_\_\_\_  
 Contact \_\_\_\_\_  
 Order No. \_\_\_\_\_

● Contact \_\_\_\_\_ ● Quantity \_\_\_\_\_ set(s) ● Delivery date / /  
 Slip No. \_\_\_\_\_ Order No. \_\_\_\_\_

● Manifold model No.  
**M**  **G**<sup>A B D E</sup>**1**  **OR-**  -   -    -  -  **3**  
 Solenoid valves Solenoid position Port size Serial transmission Terminal/connector Option Mount type Station No. Voltage

Solenoid valve model No.	Fitting CX		Valve installation position																				Qty
	A	B	1	2	3	4	5	6	7	8	9	10	11	12	13	14	15	16	17	18	19	20	
4G <input type="text"/> 9R- <input type="text"/>																							
4G <input type="text"/> 9R- <input type="text"/>																							
4G <input type="text"/> 9R- <input type="text"/>																							
4G <input type="text"/> 9R- <input type="text"/>																							
4G <input type="text"/> 9R- <input type="text"/>																							
3G <input type="text"/> 9R- <input type="text"/>																							
3G <input type="text"/> 9R- <input type="text"/>																							
Masking plate 4G1R-MP(S)- <input type="text"/>																							
Masking plate 4G1R-MP(D)- <input type="text"/>																							
Air supply spacer 4G1R-P- <input type="text"/>																							
In-stop valve spacer 4G1R-IS <input type="text"/>																							
Exhaust spacer 4G1R-R- <input type="text"/>																							
Mounting Rail	L <sub>2</sub> = <input type="text"/> <small>*Write an integer multiple of 12.5.</small>	Included Part	Blanking plug				Threaded plug				Silencer												
			PG-P2-B *2		GWP 4-B		4G1R-M5P		SLW-6S		SLW-6A												
			GWP 6-B		GWP 8-B *3																		
			Push-in fitting tube remover (included as standard) <input type="checkbox"/> Not required (check the box)																				

\*Tube remover is not included with C8 of M4GB. \* Compatible only with 2:M4GA and B \* Compatible only with 3:M4GB3

● Wiring specifications sheet (Not required for standard wiring/double wiring. Complete these specifications when specifying the wiring order and additional cables)

Connector pin No.				Installation position																			
T8TG*				1	2	3	4	5	6	7	8	9	10	11	12	13	14	15	16	17	18	19	20
T8TG1	CC-Link IE TSN	NPN	16 points	1																			
T8TG2			32 points	2																			
T8TGP1		PNP	16 points	3																			
T8TGP2			32 points	4																			
				5																			
				6																			
				7																			
				8																			
				9																			
				10																			
				11																			
				12																			
				13																			
				14																			
				15																			
				16																			
				17																			
				18																			
				19																			
				20																			
				21																			
				22																			
				23																			
				24																			
				25																			
				26																			
				27																			
				28																			
				29																			
				30																			
				31																			
				32																			

# M4G2 Serial Transmission Thin type

## M4G<sup>A B D E</sup>2-T8 Manifold specifications sheet

Date issued / /

Company \_\_\_\_\_

Contact \_\_\_\_\_

Order No. \_\_\_\_\_

● Contact                      ● Quantity                      set(s)                      ● Delivery date /

Slip No. \_\_\_\_\_ Order No. \_\_\_\_\_

● Manifold model No.

**M**  **G<sup>A B D E</sup>2**  **OR-**  -     -  -  - **3**

Solenoid valves                      Solenoid position                      Port size                      Serial transmission                      Terminal/connector pin array                      Option                      Mount type                      Station No.                      Voltage

Solenoid valve model No.	Fitting CX		Valve installation position																		Qty		
	A	B	1	2	3	4	5	6	7	8	9	10	11	12	13	14	15	16	17	18		19	20
4G	2	9R																					
4G	2	9R																					
4G	2	9R																					
4G	2	9R																					
4G	2	9R																					
3G	2	9R																					
3G	2	9R																					
Masking plate 4G2R-MP(S)-																							
Masking plate 4G2R-MP(D)-																							
Air supply spacer 4G2R-P-																							
In-stop valve spacer 4G2R-IS																							
Exhaust spacer 4G2R-R-																							
Pilot check valve spacer 4G2R-PC-M *																							
Mounting Rail L <sub>2</sub> = *Write an integer multiple of 12.5	Included Part	Blanking plug						Threaded plug			Silencer												
		GWP 4-B		GWP 6-B				4G2R-06P			SLW-8S		SLW-8A										
		GWP 8-B		GWP 10-B *																			

\* Only M4GB supported

● Wiring specifications sheet (Not required for standard wiring/double wiring. Complete these specifications when specifying the wiring order and additional cables)

Connector pin No.				Installation position																			
T8TG*				1	2	3	4	5	6	7	8	9	10	11	12	13	14	15	16	17	18	19	20
T8TG1	CC-Link IE TSN	NPN	16 points	1																			
T8TG2			32 points	2																			
T8TGP1	PNP	16 points	4	3																			
T8TGP2			32 points	5																			
				6																			
				7																			
				8																			
				9																			
				10																			
				11																			
				12																			
				13																			
				14																			
				15																			
				16																			
				17																			
				18																			
				19																			
				20																			
				21																			
				22																			
				23																			
				24																			
				25																			
				26																			
				27																			
				28																			
				29																			
				30																			
				31																			
				32																			



# M4G3 Serial Transmission Thin type

## M4G<sup>A B D E</sup>3-T8 Manifold specifications sheet

Date issued / /

Company

Contact

Order No.

● Contact                      ● Quantity                      set(s)                      ● Delivery date                      /

Slip No.                      Order No.

● Manifold model No.

M <sup>A B D E</sup>  G <sup>A B D E</sup>  3  OR-  -  -  -  -  -  -  -  - **3**

Solenoid valves                      Solenoid position                      Port size                      Serial transmission                      Terminal/connector pin Array method                      Option                      Mount Type                      Station No.                      Voltage

Solenoid valve model No.	Fitting CX		Valve installation position																Qty
	A	B	1	2	3	4	5	6	7	8	9	10	11	12	13	14	15	16	
4G <sup>A B D E</sup> <input type="text"/> 3 <sup>A B D E</sup> <input type="text"/> 9R- <input type="text"/>																			
4G <sup>A B D E</sup> <input type="text"/> 3 <sup>A B D E</sup> <input type="text"/> 9R- <input type="text"/>																			
4G <sup>A B D E</sup> <input type="text"/> 3 <sup>A B D E</sup> <input type="text"/> 9R- <input type="text"/>																			
4G <sup>A B D E</sup> <input type="text"/> 3 <sup>A B D E</sup> <input type="text"/> 9R- <input type="text"/>																			
4G <sup>A B D E</sup> <input type="text"/> 3 <sup>A B D E</sup> <input type="text"/> 9R- <input type="text"/>																			
3G <sup>A B D E</sup> <input type="text"/> 3 <sup>A B D E</sup> <input type="text"/> 9R- <input type="text"/>																			
3G <sup>A B D E</sup> <input type="text"/> 3 <sup>A B D E</sup> <input type="text"/> 9R- <input type="text"/>																			
Masking plate 4G3R-MP(S)-																			
Masking plate 4G3R-MP(D)-																			
Air supply spacer 4G3R-P-																			
In-stop valve spacer 4G3R-IS																			
Exhaust spacer 4G3R-R-																			
Mounting Rail L <sub>2</sub> = <input type="text"/> <small>*Write an integer multiple of 12.5.</small>	Included Part	Blanking plug				Threaded plug				Silencer									
		GWP 6-B	GWP 8-B	GWP 10-B	4G3R-08P	SLW-10A	SLW-10L												

● Wiring specifications sheet (Not required for standard wiring/double wiring. Complete these specifications when specifying the wiring order and additional cables)

Connector pin No.				Installation position															
T8TG*				1	2	3	4	5	6	7	8	9	10	11	12	13	14	15	16
T8TG1	CC-Link IE TSN	NPN	16 points	1															
T8TG2			32 points	2															
T8TGP1		PNP	16 points	3															
T8TGP2			32 points	4															
				5															
				6															
				7															
				8															
				9															
				10															
				11															
				12															
				13															
				14															
				15															
				16															
				17															
				18															
				19															
				20															
				21															
				22															
				23															
				24															
				25															
				26															
				27															
				28															
				29															
				30															
				31															
				32															

# MN4G1 Block Manifold Specifications Sheet

● Contact       ● Quantity set(s)       ● Delivery date       Date issued / /

Slip No.       Order No.       Company

● Manifold model No.

MN  <sup>A</sup>G  <sup>B</sup>1  <sup>C</sup>0R-  -  -  -  -  -  -  <sup>D</sup>  <sup>E</sup>  <sup>F</sup>  <sup>G</sup>  <sup>H</sup>   3

● A Model No. ● B Solenoid position ● C Port size ● D Electrical connections ● E Terminal/connecting pin ● F Option ● G Station No. ● H Voltage  
 (Reduced wiring connection) Array (Note: Fill in for reduced wiring.)

Select a model No. from the block components listed in "Pneumatic valves" (No. CB-023SA) when inputting.

Part name	Model No.	Layout position																														Qty.
		1	2	3	4	5	6	7	8	9	10	11	12	13	14	15	16	17	18	19	20	21	22	23	24	25	26	27	28	29	30	
WiringBlock	<b>N4G1R-T8TG</b>																															
With solenoid valve ValveLock	<b>N4G</b> 1 <b>0R-</b>																															
	<b>N4G</b> 1 <b>0R-</b>																															
	<b>N4G</b> 1 <b>0R-</b>																															
	<b>N4G</b> 1 <b>0R-</b>																															
	<b>N4G</b> 1 <b>0R-</b>																															
	<b>N4G</b> 1 <b>0R-</b>																															
	<b>N3G</b> 1 <b>0R-</b>																															
	<b>N3G</b> 1 <b>0R-</b>																															
With masking plate Valve block	<b>N4G</b> 1R-MPS-																															
	<b>N4G</b> 1R-MPD-																															
Air supply spacer	<b>4G1R-P-</b>																															
	<b>4G1R-P-</b>																															
Exhaust spacer	<b>4G1R-R-</b>																															
In-stop valve spacer	<b>4G1R-IS</b>																															
Supply and exhaust block	<b>N4G1R-Q</b> -																															
	<b>N4G1R-Q</b> -																															
	<b>N4G1R-Q</b> -																															
Partition block	<b>N4G1R-S</b>																															
	<b>N4G1R-S</b>																															
	<b>N4G1R-S</b>																															
End block	<b>N4G1R-E</b>																															
Mounting rail	L <sub>2</sub> = <input type="text"/> * Write an integer multiple of 12.5 Please fill in.	Blanking plug										Silencer					Tag plate (included)			Included Part												
		<b>PG-P2-B</b>					<b>GWP 4-B</b>					<b>SLW-H6</b>		<b>SLW-H8</b>			<b>A</b>	<b>B1</b>	<b>B2</b>													
		<b>GWP 6-B</b>					<b>GWP 8-B</b>					Push-in fitting tube remover (included as standard) <input type="checkbox"/> Not required (check the box)																				

\* Only MN4GA, B supported

# MN4G2 Block manifold specifications sheet

● Contact

● Quantity set(s)

● Delivery date

Date issued / /

Slip No.  Order No.

Company

● Manifold model No.

Contact

MN  <sup>A</sup> <sup>B</sup> <sup>D</sup> <sup>E</sup> 2  0R-  -    -  -   3

Order No.

● A Model No. ● B Solenoid position ● C Port size ● D Electrical connections ● E Terminal/connector pin ● F Option ● G Station No. ● H Voltage  
(Reduced wiring connection) Array (Note: Fill in for reduced wiring.)

Select a model No. from the block components listed in "Pneumatic valves" (No. CB-023SA) when inputting.

Part name	Model No.	Layout position																														Qty.	
		1	2	3	4	5	6	7	8	9	10	11	12	13	14	15	16	17	18	19	20	21	22	23	24	25	26	27	28	29	30		
Wiring block	N4G2R-T8TG																																
With solenoid valve Valve block	N4G: 2 0R-																																
	N4G: 2 0R-																																
	N4G: 2 0R-																																
	N4G: 2 0R-																																
	N4G: 2 0R-																																
	N4G: 2 0R-																																
	N3G: 2 0R-																																
	N3G: 2 0R-																																
With masking plate Valve block	N4G: 2R-MPS-																																
	N4G: 2R-MPD-																																
Air supply spacer	4G2R-P-																																
	4G2R-P-																																
Exhaust spacer	4G2R-R-																																
In-stop valve spacer	4G2R-IS																																
Spacer Pilot check valve	4G2R-PC-M																																
Supply and exhaust block	N4G2R-Q -																																
	N4G2R-Q -																																
	N4G2R-Q -																																
Partition block	N4G2R-S																																
	N4G2R-S																																
	N4G2R-S																																
End block	N4G2R-E																																
Mounting rail	L <sub>2</sub> = <input type="text"/> * Write an integer multiple of 12.5 Please fill in.	Blanking plug						Silencer						Tag plate (included)						Included Part													
		GWP 4-B			GWP 8-B			SLW-H8			A			B																			
		GWP 6-B			GWP 10-B			SLW-H10																									

\*1: Only MN4GA, B supported \*2: Only MN4GB supported

# MN4G 1/2 Mix manifold specifications sheet

● Contact                          ● Quantity set(s)                          ● Delivery date                          Date issued      /      /

Slip No. Order No.

Company

● Manifold model No.

Contact



Order No.

Select a model No. from the block components listed in "Pneumatic valves" (No. CB-023SA) when inputting.

Part name	Model No.	Layout position																														Qty.
		1	2	3	4	5	6	7	8	9	10	11	12	13	14	15	16	17	18	19	20	21	22	23	24	25	26	27	28	29	30	
Wiring block	N4G1R-T8TG																															
With solenoid valve Valve block	N4G    0R-																															
	N4G    0R-																															
	N4G    0R-																															
	N4G    0R-																															
	N4G    0R-																															
	N4G    0R-																															
	N3G    0R-																															
	N3G    0R-																															
With masking plate Valve block	N4G    R-MP																															
	N4G    R-MPS																															
	N4G    R-MPD																															
Air supply spacer	4G1R-P-																															
	4G2R-P-																															
Exhaust spacer	4G1R-R-																															
	4G2R-R-																															
In-stop valve spacer *1	4G1R-IS																															
	4G2R-IS																															
Mixed block	N4G12R-MIX																															
Supply and exhaust block	N4G    R-Q   -																															
	N4G    R-Q   -																															
	N4G    R-Q   -																															
Partition block	N4G    R-S																															
	N4G    R-S																															
	N4G    R-S																															
End block	N4G2R-E																															
Mounting rail	L <sub>2</sub> = <input style="width: 80px; border: none; border-bottom: 1px dashed gray;" type="text"/> * Write an integer multiple of 12.5 Please fill in.	Blanking plug																				Silencer		Included Part								
		PG-P2-B	GWP	-B	GWP	-B	GWP	-B	SLW-H	SLW-H																						
		GWP	-B											Push-in fitting tube remover (included as standard) <input type="checkbox"/> Not required (check the box)																		

\* Only 1: MN4GA and B are supported

# Serial transmission (T8TG\*) wiring specifications sheet

\* Fill in and attach to the manifold specifications sheet for anything other than the standard wiring or double wiring. (Available as made to order)

\* Not required with standard wiring/double wiring.

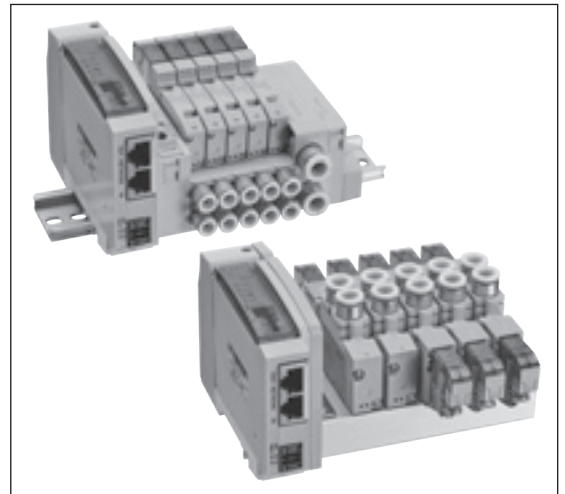
Serial transmission				Connector pin No.	Valve No.																							
				T8*	1	2	3	4	5	6	7	8	9	10	11	12	13	14	15	16	17	18	19	20	21	22	23	24
T8TG1	CC-Link IE TSN	NPN	16 points	1																								
			32 points	2																								
PNP		16 points	3																									
		32 points	4																									
T8TG2				5																								
T8TGP1				6																								
T8TGP2				7																								
				8																								
				9																								
				10																								
				11																								
				12																								
				13																								
				14																								
				15																								
				16																								
				17																								
				18																								
				19																								
				20																								
				21																								
				22																								
				23																								
				24																								
				25																								
				26																								
				27																								
				28																								
				29																								
				30																								
				31																								
				32																								

## Related products

### CC-link IE Filed Compatible Serial Transmission Slave Unit M4G/MN4G-T8 Series

- Two types of input/output points are available (16-point output, 32-point output)
- Two output types are available (NPN, PNP output)
- Thin and space saving
- RJ45 connector with high versatility
- Compatible with Fast Link-Up Component

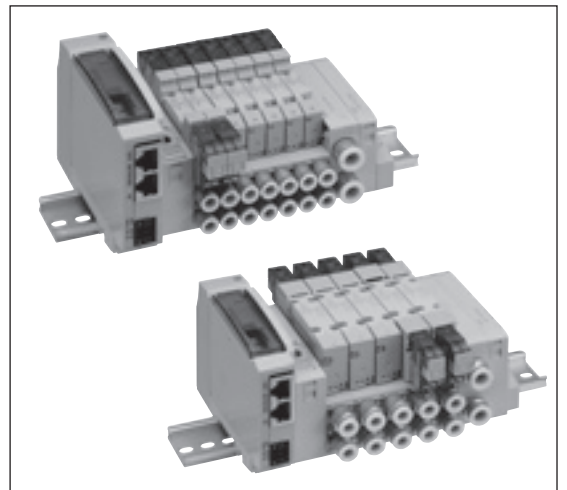
Catalog No. CC-1475A



### CC-link IE Filed Basic Compatible Serial Transmission Slave Unit M4G/MN4G-T8 Series

- Two types of input/output points are available (16-point output, 32-point output)
- Two output types are available (NPN, PNP output)
- Thin and space saving

Catalog No. CC-1359A



### IoT Compatible Components Series

- Compatible with various industrial networks to support IoT at production sites. Contributes to the visualization of actuators and sensors operating inside equipment.
- In addition to electric actuators and direct drive motors that require reduced wiring, the lineup includes sensor-level network devices that are closer to the workpiece.
- Pneumatic and electric devices are listed by network to help reduce work hours in determining the network for the equipment.

Catalog No. CC-1466A





## CKD Corporation

Website <https://www.ckd.co.jp/en/>

- 2-250 Ouji, Komaki City, Aichi 485-8551, Japan
- PHONE +81-568-74-1338 FAX +81-568-77-3461

### ASIA

#### 喜開理(上海)機器有限公司

#### CKD(SHANGHAI) CORPORATION

●營業部 / 上海浦西事務所 (SALES HEADQUARTERS / SHANGHAI PUXI OFFICE)  
Room 601, 6th Floor, Yuanzhongkeyan Building, No. 1905  
Hongmei Road, Xinhui District, Shanghai 200233, China  
PHONE +86-21-61911888 FAX +86-21-60905356

- 上海浦東事務所 (SHANGHAI PUDONG OFFICE)
- 寧波事務所 (NINGBO OFFICE)
- 杭州事務所 (HANGZHOU OFFICE)
- 無錫事務所 (WUXI OFFICE)
- 昆山事務所 (KUNSHAN OFFICE)
- 蘇州事務所 (SUZHOU OFFICE)
- 南京事務所 (NANJING OFFICE)
- 合肥事務所 (HEFEI OFFICE)
- 成都事務所 (CHENGDU OFFICE)
- 武漢事務所 (WUHAN OFFICE)
- 鄭州事務所 (ZHENGZHOU OFFICE)
- 長沙事務所 (CHANGSHA OFFICE)
- 重慶事務所 (CHONGQING OFFICE)
- 西安事務所 (XIAN OFFICE)
- 廣州事務所 (GUANGZHOU OFFICE)
- 中山事務所 (ZHONGSHAN OFFICE)
- 深圳西事務所 (WEST SHENZHEN OFFICE)
- 深圳東事務所 (EAST SHENZHEN OFFICE)
- 東莞事務所 (DONGGUAN OFFICE)
- 廈門事務所 (XIAMEN OFFICE)
- 福州事務所 (FUZHOU OFFICE)
- 瀋陽事務所 (SHENYANG OFFICE)
- 大連事務所 (DALIAN OFFICE)
- 長春事務所 (CHANGCHUN OFFICE)
- 北京事務所 (BEIJING OFFICE)
- 天津事務所 (TIANJIN OFFICE)
- 青島事務所 (QINGDAO OFFICE)
- 濰坊事務所 (WEIFANG OFFICE)
- 濟南事務所 (JINAN OFFICE)
- 煙台事務所 (YANTAI OFFICE)

#### CKD INDIA PRIVATE LTD.

##### ● HEADQUARTERS

Unit No. 607, 6th Floor, Welldone Tech Park, Sector 48,  
Sohna Road, Gurgaon-122018, Haryana, India  
PHONE +91-124-418-8212 FAX +91-(0) 124-418-8216

- BANGALORE OFFICE
- PUNE OFFICE

#### PT CKD TRADING INDONESIA

##### ● HEAD OFFICE

Menara Bidakara 2, 18th Floor, Jl. Jend. Gatot Subroto Kav.  
71-73, Pancoran, Jakarta 12870, Indonesia  
PHONE +62-21-2938-6601 FAX +62-21-2906-9470

- MEDAN OFFICE
- BEKASI OFFICE
- KARAWANG OFFICE
- SEMARANG OFFICE
- SURABAYA OFFICE

#### CKD KOREA CORPORATION

##### ● HEADQUARTERS

(3rd Floor), 44, Sinsu-ro, Mapo-gu, Seoul 04088, Korea  
PHONE +82-2-783-5201~5203 FAX +82-2-783-5204

- 水原營業所 (SUWON OFFICE)
- 天安營業所 (CHEONAN OFFICE)
- 蔚山營業所 (ULSAN OFFICE)

#### M-CKD PRECISION SDN.BHD.

##### ● HEAD OFFICE

Lot No.6,Jalan Modal 23/2, Seksyen 23, Kawasan MIEL,  
Fasa 8, 40300 Shah Alam,Selangor Darul Ehsan, Malaysia  
PHONE +60-3-5541-1468 FAX +60-3-5541-1533

- JOHOR BAHRU BRANCH OFFICE
- PENANG BRANCH OFFICE

#### CKD SINGAPORE PTE. LTD.

No.33 Tannery Lane #04-01 Hoesteel Industrial  
Building, Singapore 347789, Singapore  
PHONE +65-67442623 FAX +65-67442486

#### CKD CORPORATION BRANCH OFFICE

No.33 Tannery Lane #04-01 Hoesteel Industrial  
Building, Singapore 347789, Singapore  
PHONE +65-67447260 FAX +65-68421022

#### CKD THAI CORPORATION LTD.

##### ● HEADQUARTERS

19th Floor, Smooth Life Tower, 44 North Sathorn Road,  
Silom, Bangkok, Bangkok 10500, Thailand  
PHONE +66-2-267-6300 FAX +66-2-267-6304-5

- NAVANAKORN OFFICE
- EASTERN SEABOARD OFFICE
- LAMPHUN OFFICE
- KORAT OFFICE
- AMATANAKORN OFFICE
- PRACHINBURI OFFICE
- SARABURI OFFICE

#### 台灣喜開理股份有限公司

#### TAIWAN CKD CORPORATION

##### ● HEADQUARTERS

16F-3, No. 7, Sec. 3, New Taipei Blvd., Xinzhuang Dist.,  
New Taipei City 242, Taiwan  
PHONE +886-2-8522-8198 FAX +886-2-8522-8128

- 新竹營業所 (HSINCHU OFFICE)
- 台中營業所 (TAICHUNG OFFICE)
- 台南營業所 (TAINAN OFFICE)
- 高雄營業所 (KAOSHIUNG OFFICE)

#### CKD VIETNAM ENGINEERING CO.,LTD.

##### ● HEADQUARTERS

18th Floor, CMC Tower, Duy Tan Street, Cau Giay  
District, Hanoi, Vietnam  
PHONE +84-24-3795-7631 FAX +84-24-3795-7637

- HO CHI MINH OFFICE

#### EUROPE

#### CKD EUROPE B.V.

##### ● HEADQUARTERS

Beechavenue 125A, 1119 RB Schiphol-Rijk, the Netherlands  
PHONE +31-23-554-1490

- CKD EUROPE GERMANY OFFICE
- CKD EUROPE UK
- CKD EUROPE CZECH O.Z.

#### CKD CORPORATION EUROPE BRANCH

Beechavenue 125A, 1119 RB Schiphol-Rijk, the Netherlands  
PHONE +31-23-554-1490

#### NORTH AMERICA & LATIN AMERICA

#### CKD MEXICO, S. DE R.L. DE C.V.

Cerrada la Noria No. 200 Int. A-01, Querétaro Park II,  
Parque Industrial Querétaro, Santa Rosa Jáuregui,  
Querétaro, C.P. 76220, México  
PHONE +52-442-161-0624

#### CKD USA CORPORATION

##### ● HEADQUARTERS

1605 Penny Lane, Schaumburg, IL 60173, USA  
PHONE +1-847-648-4400 FAX +1-847-565-4923

- LEXINGTON OFFICE
- SAN ANTONIO OFFICE
- SAN JOSE OFFICE/ TECHNICAL CENTER
- DETROIT OFFICE
- BOSTON OFFICE

The goods and/or their replicas, the technology and/or software found in this catalog are subject to complementary export regulations by Foreign Exchange and Foreign Trade Law of Japan.

If the goods and/or their replicas, the technology and/or software found in this catalog are to be exported from Japan, Japanese laws require the exporter makes sure that they will never be used for the development and/or manufacture of weapons for mass destruction.