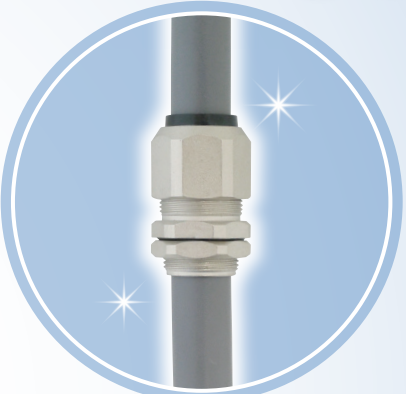


# Metallic Slim



Line up expanded to 10 sizes!

# IP67



RoHS2

Weather E

OIL

Impact-resistant metallic body. Ideal for cable entries of LED fixtures or small motors!

## For cable entries in limited spaces. Industry's smallest and stylish design

Massive reduction in size  
\*In comparison with plastic type

■ Applicable cable diameters (in mm)

	φ2	2.5	3	3.5	4	4.5	5	5.5	6	6.5	7	7.5	8	8.5	9	9.5	10	10.5	11	11.5	12	
OA-WS04M-20/25																						
OA-WS06M-25/40																						
OA-WS07M-35/50																						
OA-WS08M-45/60																						
OA-WS09M-55/70																						
OA-WS10M-65/80																						
OA-WS11M-75/90 <b>NEW</b>																						
OA-WS12M-85/100 <b>NEW</b>																						
OA-WS13M-95/110 <b>NEW</b>																						
OA-WS14M-105/120 <b>NEW</b>																						

## Model/Specifications

• Weatherproof type Rubber bushing : Blue O-ring : Blue

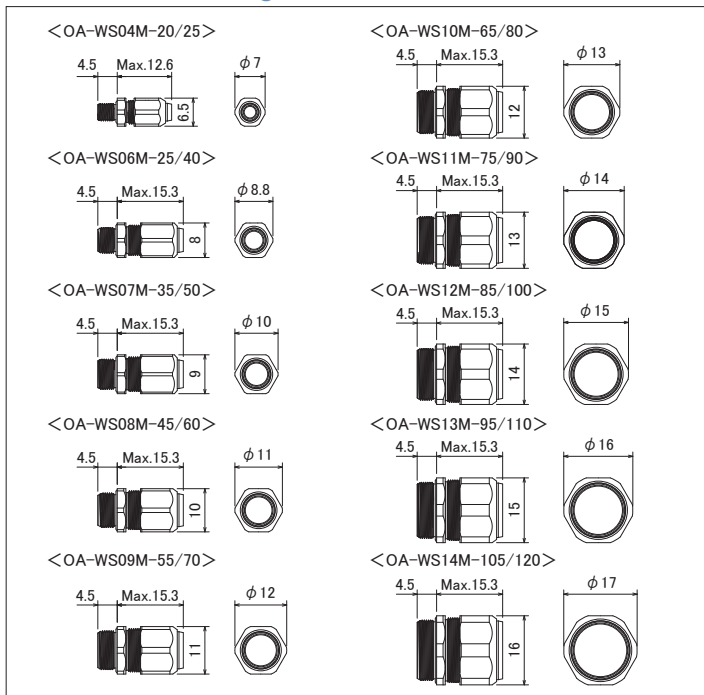
Model	Applicable cable dia.(mm)	Entry hole dia.(mm)*	Threads	Working temperature	Weight	Q'ty per pack	Locknut model
OA-WS04M-20/25E	φ 2~2.5	φ 4	M4 × 0.5	-25 to +100°C	2g	10 pcs.	LN-WS04M
OA-WS06M-25/40E	φ 2.5~4	φ 6	M6 × 0.5		4g		LN-WS06M
OA-WS07M-35/50E	φ 3.5~5	φ 7	M7 × 0.5		5g		LN-WS07M
OA-WS08M-45/60E	φ 4.5~6	φ 8	M8 × 0.5		6g		LN-WS08M
OA-WS09M-55/70E	φ 5.5~7	φ 9	M9 × 0.5		7g		LN-WS09M
OA-WS10M-65/80E	φ 6.5~8	φ 10	M10 × 0.5		8g		LN-WS10M
OA-WS11M-75/90E <b>NEW</b>	φ 7.5~9	φ 11	M11 × 0.5				LN-WS11MBS
OA-WS12M-85/100E <b>NEW</b>	φ 8.5~10	φ 12	M12 × 0.5				LN-WS12MBS
OA-WS13M-95/110E <b>NEW</b>	φ 9.5~11	φ 13	M13 × 0.5				LN-WS13MBS
OA-WS14M-105/120E <b>NEW</b>	φ 10.5~12	φ 14	M14 × 0.5				LN-WS14MBS

• Oilproof type Rubber bushing : Black O-ring : Black

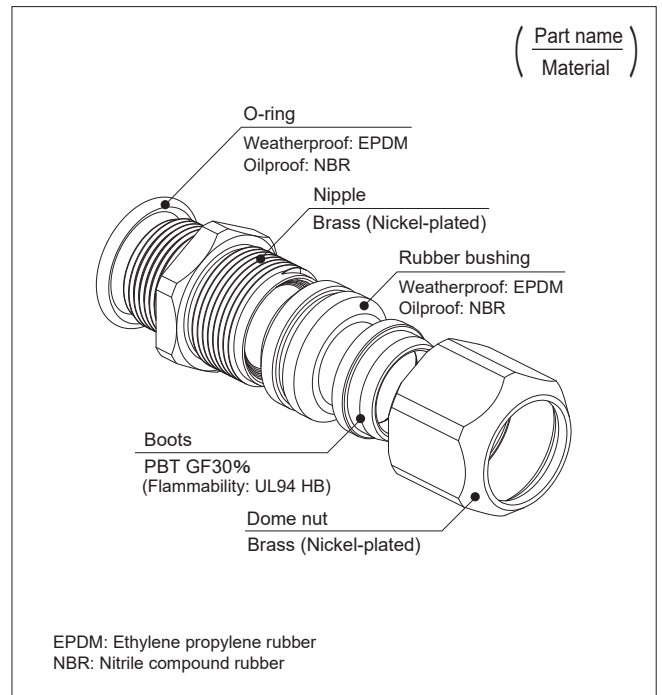
Model	Applicable cable dia.(mm)	Entry hole dia.(mm)*	Threads	Working temperature	Weight	Q'ty per pack	Locknut model
OA-WS04M-20/25	φ 2~2.5	φ 4	M4 × 0.5	-25 to +100°C	2g	10 pcs.	LN-WS04M
OA-WS06M-25/40	φ 2.5~4	φ 6	M6 × 0.5		4g		LN-WS06M
OA-WS07M-35/50	φ 3.5~5	φ 7	M7 × 0.5		5g		LN-WS07M
OA-WS08M-45/60	φ 4.5~6	φ 8	M8 × 0.5		6g		LN-WS08M
OA-WS09M-55/70	φ 5.5~7	φ 9	M9 × 0.5		7g		LN-WS09M
OA-WS10M-65/80	φ 6.5~8	φ 10	M10 × 0.5		8g		LN-WS10M
OA-WS11M-75/90 <b>NEW</b>	φ 7.5~9	φ 11	M11 × 0.5				LN-WS11MBS
OA-WS12M-85/100 <b>NEW</b>	φ 8.5~10	φ 12	M12 × 0.5				LN-WS12MBS
OA-WS13M-95/110 <b>NEW</b>	φ 9.5~11	φ 13	M13 × 0.5				LN-WS13MBS
OA-WS14M-105/120 <b>NEW</b>	φ 10.5~12	φ 14	M14 × 0.5				LN-WS14MBS

Remark(\*) : When locknut is used

## Dimensional drawing

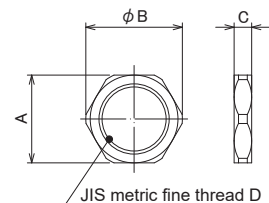


## Materials



## Option (Locknut)

Model	Plate thickness	Material	Weight	Q'ty per pack	A	B	C	D
LN-WS04M	2mm or less	Brass (Nickel-plated)	1g	10 pcs/pack	6.5	7	2	M4 × 0.5
LN-WS06M					8	8.8		M6 × 0.5
LN-WS07M					9	10		M7 × 0.5
LN-WS08M					10	11		M8 × 0.5
LN-WS09M					11	12		M9 × 0.5
LN-WS10M					12	13		M10 × 0.5
LN-WS11MBS <b>NEW</b>					13	14		M11 × 0.5
LN-WS12MBS <b>NEW</b>					14	15		M12 × 0.5
LN-WS13MBS <b>NEW</b>					15	16		M13 × 0.5
LN-WS14MBS <b>NEW</b>					16	17		M14 × 0.5



**OHM ELECTRIC CO., LTD.**  
OHM ELECTRIC

7000-21, Nakagawa, Hosoe, Kita-ku, Hamamatsu, Shizuoka 431-1304, Japan

TEL +81-53-522-5562 FAX +81-53-523-2362 e-mail : info@ohm.co.jp

URL : <http://www.ohm.jp/>

The contents of this catalog are subject to change for product improvement.  
Colors of products may slightly differ from actual due to printing.

OHM News vol.184